



SUFFOLKS

Consigned by
WAYNE SKARTVEDT FAMILY

30142 F Ave., Radcliffe, IA 50230
515/893-2315

101-Fall Ram Lamb
Skartvedt 4317 580224
Born: 09/30/08 Triplet
S: "Mr Classic"
Heggemeier 07-55 561393
D: Skartvedt 4192

102-Fall Ewe Lamb
Skartvedt 4316 580229
Born: 09/30/08 Triplet
S: "Mr Classic"
Heggemeier 07-55 561393
D: Skartvedt 4192

A pair of stylish, correct fall lambs.

Consigned by
TOLLEFSON'S WOOLIE ACRES

Jerry Tollefson ~ 650/229-4957
39360 134th St., Bath, SD 57427

103-February Ram Lamb
Information Sale Day
S: Heggemeier 07-6H3

104-January Ewe Lamb
Information Sale Day
S: Heggemeier 07-6H3

105-January Ewe Lamb
Information Sale Day
S: Heggemeier 07-6H3

We only had 5 lambs born at the end of January. Heggemeier 07-6H3 is a "Chief Justice" grandson and "The Judge" son.

Consigned by
KNUTZEN SUFFOLKS

Russ & Sue Knutzen
2140 Rd 304, Edgar, NE 68935
402/284-2328 ~ Cell: 402/469-6836
russandsue@windstream.net
VFSCP ~ January 2002

106-Yearling Ram
Knutzen 8A55 RR NN
574814

Born: 02/11/08 Twin
S: "Avalanch"
Sandage S0366 526154
D: Knutzen 4F25 530673

A full brother to our 5th place January ewe lamb at the 2007 NAILE. "Avalanch" is a "Ground Zero" son and a "Blue Print" grandson. Knutzen 4F25 is our best producing ewe.

107-Ram Lamb
Information Sale Day

108-Ewe Lamb
Information Sale Day

Consigned by
OEHLSEN FARMS

Richard Oehlsen
1943 Durham Ave.
State Center, IA 50247
641/483-2479

109-January Ram Lamb
Information Sale Day

110-February Ram Lamb
Information Sale Day

111-February Ewe Lamb
Information Sale Day

All our entries will be sired by the Bender 703 ram. His breeding goes back to 5 Star, George Bros., and Peifer Suffolks. These 2009 lambs are exceptionally long bodied with outstanding feet and legs.

SALE PHONES

OFFICE: 515/262-3111
ext. 350

RING: 515/262-3111
ext. 351



Champion Suffolk Ewe at the 2008 Corn Belt Sale. A Nebraska entry going to Iowa at \$500



This Minnesota Suffolk Champion January Ram Lamb sold to an Iowa buyer for \$1,100 at the 2008 Corn Belt Sale.

NATIONAL CORN BELT SHOW & SALE

Consigned by
**BAUMGARTNER
SUFFOLKS**

Jerry Baumgartner
2220 71st St., Avoca, MN 56114
507/335-7739 ~ Cell: 507/227-9408
Email: jerryb@frontiernet.net
Web: www.freewebs.com/
baumgartnersuffolks/

112-January Ram Lamb
Information Sale Day

113-February Ewe Lamb
Information Sale Day

Our entries will be sired by either
Rambow 07-58 or 0945 our "Backfire"
son.

Consigned by
**DAVID RAMBOW
FAMILY SUFFOLKS**

David Rambow ~ 952/466-3369
10020 Co Rd 50, Cologne, MN 55322
Email: srambow3@hotmail.com

114-Yearling Ewe
Rambow Suffolks B-821
RR 576330

Born: 01/27/08
S: "BluestaRR"
5 Star J 3125 508817

D: Rambow 05-335 RR 546172

5 Star J 3125 "BluestaRR" ewe have
been very well received. The last
couple of years, both in showing and
auction block. 821 is a long, deep bodied
ewe.

115-February Ram Lamb
Information Sale Day

This entry will be a son of our new
"Powerplus" son, Steave 9043-07. We
have a bunch of good ones. Will be RR.

Consigned by
**ZEHNDER &
ZEHNDER**

Steve & Tom Zehnder
1883 200th St., Truman, MN 56088
507/776-2423

116-Yearling Ram
Zehnder Family 820
RR NN 577755

Born: 02/22/08 Triplet
S: Van Dyke Suffolks 515
541482

D: Zehnder Family 603W RR NN
552614

Zehnder Family 603W was Reserve
Champion Ewe Lamb at the 2006
Minnesota State Fair 4-H Show.

117-Yearling Ewe
Zehnder Family 821
RR NN

Born: 02/23/08 Twin
S: Van Dyke Suffolks 515
541482

D: Bierle Suffolks 511Gr RR NN
540075



SUFFOLKS

118-February Ram Lamb
Zehnder Family 915
RR NN

Born: 02/17/09 Twin
S: "Chunk a Change"
Van Dyke 7028 RR NN
570304

D: Bierle Suffolks 424Y 548604

"Chunk A Change" is the exciting new
stud buck that sires tremendous tops
and sound lambs. "Chunk A Change"
has "Silver Charm", "ThundeRR", and
"Lightning" in his pedigree.

119-February Ewe Lamb
Information Sale Day

Consigned by
**RANDY DOMBEK
FAMILY**

2422 290th St., Ivanhoe, MN
507/694-1427 ~ Cell: 507/530-5938

120-February Ewe Lamb
Dombek Family 2182 RR

Born: 02/01/09 Twin
S: Wagner 07-3104 572094
D: Dombek Family 1873 558076

The sire is out of 5 Star J "Top Dollar".
The dam is sired by Meyer Farms 336, a
Peifer "Sea Biscuit" son.



This \$650 Suffolk 1st Fall Ewe Lamb from
Minnesota sold to an Illinois breeder in the
2008 Corn Belt Sale.



SUFFOLKS

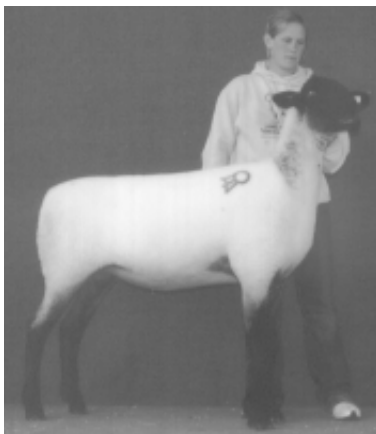
Consigned by
ARNDT ACRES
 Ron, Gail & Patrick Arndt
 11775 Co Rd 50, Norwood, MN 55368
 952/466-5876 ~ 952/201-5761 (Pat)

121-Fall Ram Lamb
Arndt Acres 896 - RR
 Born: 09/29/08 Twin
 S: Tom Burke 6098 RR 563810
 D: Martens W83 NN RR 495363
 A thick made ram with alot of potential. He's out of our Burke ram that goes back to "Stroker Ace" and "Land Lady" bred to a Martine we. This ram gives alot of size and correctness.

Consigned by
UNDERWOOD FARMS
 Tom Underwood ~ 712-330-0113
 910 6th, Spirit Lake, IA 51360

122-Yearling Ewe
Underwood Family 807
575203
 Born: 02/02/08 Twin
 S: Underwood 716 559807
 D: Underwood White 3 556483

123-Yearling Ewe
Underwood 811 575204
 Born: 02/16/08 Twin
 S: Underwood 716 559807
 D: Syringa 523 533134



This Iowa entry was the Reserve Suffolk Champion Yearling Ewe.

Consigned by
LANSING SUFFOLKS
 Kevin Lansing
 1553 175th St., Ossian, IA 52161
 563/532-9115 ~ Cell: 563/380-7292

- 124-Yearling Ram**
Information Sale Day
- 125-Yearling Ewe**
Information Sale Day
- 126-Yearling Ewe**
Information Sale Day
- 127-Yearling Ewe**
Information Sale Day
- 128-Fall Ram Lamb**
Information Sale Day

Consigned by
BIERLE SUFFOLKS
 Cheryl Bierle ~ 641/782-2527
 Cell: 641/344-9475
 1365 Hwy 34, Creston, IA 50801
 Web: www.bierlesuffolks.com

129-Yearling Ram
Bierle Suffolks 8362B
RR
 Born: 03/03/08 Twin
 S: Oak Hill 1235A RR
 S: Lux 1251
 D: Lux 1235
 D: Bierle 107L RR
 S: "Carnegie"
 Bierle 154B-K RR NN
 D: Bierle 256G QR

A young ram that is all Luxford on the sire's side-We leased this ram from Pat Hodges as a lamb. A good, tall, long bodied ram that is still growing.

130-Yearling Ewe
Bierle 6130G RR
 Born: 02/23/08 Twin
 S: Bierle 7022R RR
 S: Bierle 5817
 D: Bierle 160B
 D: Bierle 2472W RR
 S: "ASAP"
 Rosenboom 0107
 D: Bierle 58G QR

Bierle 7022R is a grandson of "Chief Justice". The sires dam is a "Lemonster"- "A Train" daughter. The dams sire is a "ASAP" daughter out of "Rushmare" a Benda Acres dam. A Lot of good genetics in this ewe.

SALE PHONES
OFFICE: 515/262-3111
 ext. 350
RING: 515/262-3111
 ext. 351

131-Fall Ram Lamb
Bierle 8729P RR
 Born: 11/09/09 Twin
 S: Bierle 6640P RR
 S: "RSVP" RR NN
 Tad Thompson 2474
 D: Bierle 299G RR
 D: Bierle 181B RR
 S: "Lemonster" Bierle
 D: Bierle 901PK

8729P's dam is a "LeMonster" daughter that has Van Arkel's "Armani" on her dam side-6640P is a "RSVP" Silver Dollar son who's dam is a "Spectacular" daughter. "Spectacular" was Ken Capron's National Champion. This ram has lots of bone and body. Don't let his age bother you. He is as big as the September lambs.

132-Fall Ewe Lamb
Bierle 8731P RR
 Born: 11/10/08
 S: Bierle 6640P RR
 S: "RSVP"
 Silver Dollar 2474 RR NN
 D: Bierle 299G RR
 D: Bierle 28P RR
 S: AnAI "Giddy Up" son
 D: Bierle 812Y
 "Priority" daughter

Same sire as our fall ram. Dam has "Giddy Up" and "Priority" in her pedigree. A nice ewe lamb that could be shown slick sheared. Again a young lamb but has a lot of size for her age.

Consigned by
HOSKINS STOCK FARM

Gary, Kathi & David Hoskins
 1651 255th, Jefferson, IA 50129
 515/386-8055 ~ Cell: 515/370-3239

133-Yearling Ewe
 Information Sale Day

Consigned by
SANDAGE FARMS

Jeff & Connie Sandage
 641/483-2291
 1189 200th St.
 State Center, IA 50247

134-Yearling Ram
 Information Sale Day

135-Yearling Ewe
 Information Sale Day

Substitute Entries Will Be
 Identified With a Line
 Under The Lot Number



SUFFOLKS

Consigned by
RENN VUE FARMS
 Terry Renn ~ 989/375-2212
 5674 Stein Rd., Pigeon, MI 48755
 Email: rennvuefarms@airqdv.net
 Web: rennvuefarms.com

136-Yearling Ewe
Renn Vue Farms LD2433
578363
 Born: 02/05/08 Twin
 S: "Lucky Draw"
 Clift 0506 533765
 D: Renn Vue Farms CL1460
 535185

137-January Ram Lamb
 Information Sale Day

138-January Ewe Lamb
 Information Sale Day

We will post pictures of our entries on our website.

Mail Bids & Delivery
Call Assistance
573/442-8257 Available



1st Suffolk Fall Ram Lamb from Iowa that sold to Illinois in the 2008 Corn Belt Sale.