



POLLED DORSETS

Consigned by
HAYES DORSETS

Roy Hayes ~ 815/938-2329
 11600 W Apple Rd.
 Forresteron, IL 61030

301-Fall Ram Lamb
Hayes 604 - RR
 Born: 10/03/08
 S: Hayes 1160 P663946
 D: Hayes 1069 P611429

Sire was the 2nd Late Fall Ram at the 2007 NAILE. Dam is the granddam of Hayes 1165, the 1st Place Fall Ram at the 2008 NAILE.

302-Fall Ewe Lamb
Hayes 608
 Born: 10/03/08
 S: Hayes 1160 P663946
 D: Hayes 1152 P661404

Sire was 2nd Late Fall Ram at the 2007 NAILE. The dam is sired by "Attitude Adjustment", who was the Champion Ram at NAILE. She has a least one R.

303-Fall Ewe Lamb
Hayes 610
 Born: 10/07/08
 S: Hayes 1140 P649926
 D: Hayes 1144 P644891

Sire is a big 40" ram by "Attitude Adjustment" that won NAILE. Dam is sired by a big Penn State ram. Will have at least one R.



This Minnesota 2nd Place Polled Dorset Yearling Ewe sold into Pennsylvania at the 2008 Corn Belt Sale.

Consigned by
GENE & MARCI SANFORD

12529 Canby Ave,
 Faribault, MN 55021
 507/645-4989

Email: mgsanford@earthlink.com

304-Fall Ewe Lamb
Sanford D603

Born: 09/19/08 Twin
 S: "RRed Hott" P624796
 D: Sanford D371 P655266

"RRed Hott" sired the 1st Place Sheared Fall Ram Lamb and Fall Ewe Lamb at the 2008 Minnesota State Fair.

305-February Ram Lamb

Information Sale Day
 S: "Blue PRRint" P662170

February RR lamb sired by "Blue PRRint" sure to be a stud ram.

306-February Ewe Lamb

Information Sale Day
 S: "Blue PRRint" P662170

Fancy lamb sired by "Blue PRRint" will be futurity nominated.

Consigned by
WOLKOW DORSETS

20147 435 Ave., DeSmet, SD 57231
 605/854-3435 ~ Cell: 605/203-1149

307-Yearling Ram
Shaffner 7F-101 - QR
P669091

Born: 10/01/07
 S: "Commotion" P634208
 D: Lauden 348 P634208

We bought this ram at last years Ohio Sale. We used him and have some great lambs. We are keeping a son of him and therefore can offer him for sale.

308-Yearling Ewe
Wolkow M815 P676073

Born: 02/13/08 Twin
 S: Wolkow M655 P665451
 D: Pines End 4 P649003

The sire was shown slick shorn as a fall ram lamb and was Champion at South Dakota and Reserve at Iowa and Minnesota.

309-Early Fall Ewe Lamb
Wolkow T806

Born: 09/16/08
 S: "Titan" P634991
 D: Woodchuck Farm 2629 P645081

"Titan" was Reserve Champion at NAILE as a lamb and Champion at NAILE as a yearling.

310-January Ram Lamb

Information Sale Day

Will be sired by "Titan" or "Son of a Gun".

311-January Ewe Lamb

Information Sale Day

Will be sired by "Titan" or "Son of a Gun".

312-Fall Ewe Lamb

Information Sale Day

Will be sired by "Titan" or "Son of a Gun".

Consigned by
ARNDT ACRES
Ron, Gail & Patrick Arndt
11775 Co Rd 50, Norwood, MN 55368
952/466-5876 ~ 952/201-5761 (Pat)

313-Yearling Ram
Arndt Acres 881 - RR
P673002
Born: 01/10/08
S: Arndt Acres 486 P44903
D: Arndt Acres 603 QR P663517

A really thick ram that was in our show flock last year. 486 was Champion and Reserve Champion at two fairs and was 1st Place at the Minnesota State FFA Show in 2005.

314-Yearling Ewe
Arndt Acres 812 - RR
P673017
Born: 02/09/08
S: Arndt Acres w645 P655287
D: Arndt Acres 604 RR P663516

812 was in our show flock last year. 645 was 3rd Place Yearling Ram at Minnesota State Fair in 2007 Open Show. The dam is from a line that has given us many show animals.

315-Fall Ewe Lamb
Information Sale Day
She will have at least one R.

Consigned by
FRUECHTE FAMILY
DORSETS
Justin Fruechte ~ 605/690-3309
19077 465th Ave.
Estelline, SD 57234
jwfruechte@jacks.sdstate.edu
www.fruechtefamilyfarms.com

316-Fall Ram Lamb
Fruechte Family 295
P677318
Born: 09/21/08
S: Ram & Ewe Farm 0398
P664684
D: Fruechte Family Dorsets
B207 P656698

A heavy boned, long bodied ram with a beautiful head. Check out pictures on the website.

317-Fall Ewe Lamb
Fruechte Family 296
P677319
Born: 10/03/08
S: Ram & Ewe Farm 0398
P664684
D: Fruechte Family Dorsets
0398 P636476

Sire is out of "R Sup" and an "Encore" daughter. B125 is one of the most productive ewes in the flock.



POLLED DORSETS

Consigned by
SUGARLOAF
DORSETS
Troy Woelber
1235 60th Ave, Pipestone, MN 56164
507/825-2204 ~ Cell: 507/215-0458
Email: sugarloafdorsets@svtv.com
Web: www.sugarloafdorsets.com

318-Yearling Ram
Sugarloaf Dorsets 838S
P674421
Born: 03/08/08
S: "Park Place"
Riverwood 4496 P655043
D: Sugarloaf Dorsets 723S
P674417

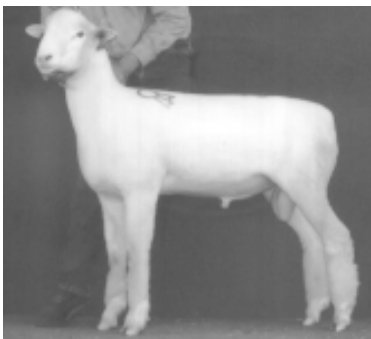
Big boned, super topped ram. Sire is "Park Place"-2006 NAILE Jr. Reserve Champion, on of the last sons of "Boardwalk". Dam is out of Wolkow bloodlines.

319-Fall Ewe Lamb
Sugarloaf Dorsets 818F
Born: 12/02/08 Twin
S: "Park Place"
Riverwood 4496 P655043
D: Sugarloaf Dorsets 511
P666643

Very thick, level topped ewe lamb. "Park Place" was '06 NAILE Reserve Jr. Champion.

320-Fall Ewe Lamb
Sugarloaf Dorsets 805F
Born: 10/02/08
S: "Park Place"
Riverwood 4496 P655043
D: Sugarloaf Dorsets 14-05
P656189

Thick, heavy boned ewe lamb. Will make a great brood ewe.



This Ohio Champion Polled Dorset Fall Ram Lamb entry in the 2008 Corn Belt Sale sold to Illinois.



POLLED DORSETS

321-February Ram Lamb
Sugarloaf Dorsets 907S
Born: 02/002/09 Twin
S: "Desperado"
Spilde 7811 P669735
D: Good-Ewe Dorsets 0528
P647714

322-February Ewe Lamb
Sugarloaf Dorsets 806S
Born: 02/01/09 Twin
S: "Park Place"
Riverwood 4496 P655043
D: Sugarloaf Dorsets 04-511S
P646200

Complete ewe lamb with a real big hip.

Consigned by
DEW DROP FARMS
Duane, Sara, Darin Bauck
38118 510th Ave.
New York Mills, MN 56567
218/640-7800(Duane)
218/640-1020(Sara)
218/639-8484(Darin)

323-Early Fall Ewe
Information Sale Day

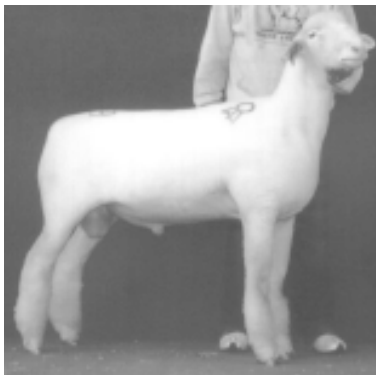
Will be sired by Bauck 7-17-a two time class winner at the MN State Fair.

324-Late Fall Ewe
Information Sale Day

We usually bring one of our best to this sale. It will be sired by Bauck 7-17. Our fall lambs look promising.

325-November Ram Lamb
Information Sale Day

This will be one our best November lambs.



Another Minnesota Polled Dorset Reserve Champion Fall Ram Lamb that sold into Illinois at \$800 at the 2008 Corn Belt Sale.

SOUTHDOWNS

Consigned by
HELD BROTHERS
SOUTHDOWNS
Aaron & Austin Held
21320 477th Ave., Aurora, SD 57002
605/693-4203 ~ Cell: 605/690-7033
Email: mheld@itctel.com

401-January Ewe Lamb
HBS 09-2920
Born: 01/26/09 Twin
S: Fielder 712 W9886
D: McGuire 2244 QR U4841

With a dozen ewe lambs born in January, we will pick lambs for this sale that can compete at the youth showing. At the 2008 All-American Show we had a great day with most classes ranking in the top five and expect to have similar high quality lambs in the Cornbelt Sale.

402-January Ewe Lamb
HBS 09-2921
Born: 01/26/09 Twin
S: Fielder 712 W9886
D: McGuire 2244 QR U4841

Over 30 spring lambs by Fielder 712...did a great job producing a uniform set of lambs with excellent top and hip structure. We purchased this Res Champion Ram at the 2008 Midwest Sale.

Consigned by
AUBY SISTERS
SOUTHDOWNS
Emily & Elizabeth Auby
2532 Koshkonong Rd.
Stoughton, WI 53589
608/877-1551 ~ Cell: 608/575-2419
Email: auby@wildblue.net

403-January Ewe Lamb
Auby 9-01
Born: 01/22/09 Twin
S: B&B Howard 7024-07 X1123
D: K Seibel 4-31 V7509

404-February Ewe Lamb
Auby 9-22
Born: 02/06/09 Twin
S: B&B Howard 7024-07 X1123
D: Haystack Mtn SDS 0074
V5085

Substitute Entries Will Be Identified With a Line Under The Lot Number



SOUTHDOWNS

Consigned by
MCGUIRE SHEEP
 Bruce McGuire
 8813 Hwy 552 N, Baxter, IA 50028
 641/227-3146 ~ Cell: 515/402-1943
 Email: baxterre@hughes.net

405-Yearling Ewe
 Information Sale Day

406-Yearling Ewe
 Information Sale Day

407-Fall Ram Lamb
 Information Sale Day

Consigned by
OLDENBURG FARMS
 Jeff Oldenburg
 23103 W Broadway
 Mulhall, OK 73063
 405/649-2049 ~ Cell: 405/880-5857
 Email: joldenburg@ditchwitch.com
 Web: www.clublambpage.com/
 oldenburg

408-Yearling Ewe
 Information Sale Day

409-Fall Ewe Lamb
 Information Sale Day

410-February Ram Lamb
 Information Sale Day

411-January Ewe Lamb
 Information Sale Day



Champion Southdown February Ewe Lamb at the 2008 Corn Belt Sale sold from Iowa to Oregon.

412-February Ewe Lamb
 Information Sale Day
 This is our 1st time to consign to the Cornbelt Sale. We will bring a very nice set of lambs sired by "Goldfinger" or "Bedlam". Check out our website for pictures and more information.

Consigned by
NORTHERN STARR LIVESTOCK SERVICES
 Jeff & Tracy Repasky
 14580 Mystic Lake Dr.
 Prior Lake, MN 55372
 952/445-6680 ~ Cell: 612/282-7782

413-Yearling Ram
 Information Sale Day

414-Spring Ewe Lamb
 Information Sale Day

415-Spring Ewe Lamb
 Information Sale Day

Consigned by
WOLKOW FAMILY
 Devon Wolkow & Family
 20147 435 Ave., DeSmet, SD 57231
 605/854-3435 ~ Cell: 605/203-1149

416-Yearling Ewe Wolkow 829
 Born: 03/02/08 Twin
 S: Wolkow 502 V9647
 D: McGuire 2243 V1192
 This yearling has really come on.

417-February Ewe Lamb
 Information Sale Day
 Will be sired by MB Genetics 8-4EM2, an "Ambush" son.

Consigned by
WILLWERTH SOUTHDOWNS
 Tom Willwerth
 1244 Xavier Ave.
 Eagle Grove, IA 50533
 515/356-2182 ~ Cell: 515/689-5768
 Email: wilwerth@wccta.net

418-Spring Ewe Lamb
 Information Sale Day

419-Spring Ewe Lamb
 Information Sale Day



Reserve Champion Southdown January Ewe Lamb at the 2008 Corn Belt Sale sold from Minnesota to Pennsylvania at \$1,100.