

*Consigned By*  
**RQL FARMS**

David & Sandra Rock  
590 Montgomery Rd.  
Hillsborough, NJ 08844  
H: 908/369-6413 ~ C: 908/938-1920  
Email: rqlfarms@comcast.net  
Web: www.rqlfarms.com

**1-Yearling Ram**  
**RQL Farms 1033**

**B:** 11/4/2009 Twin RR  
**S:** RQL Farms 0833 25645  
**D:** Kleman 75 24098

Our fall show ram from '10 Midwest Sale. He was competitive all year. Good bone and great color. He grew out well over the winter. Sired by the full brother to "Rock Star", the '08 OH State Fair Champion, currently owned by Mom's Tunis.

**2-Fall Ram Lamb**  
**RQL Farms 1107**

**B:** 10/31/2010 Twin QR  
**S:** RQL Farms 0833 25645  
**D:** Kleman 75 24098

We liked the breeding so much we did it again with the same results—a flashy show ram with lots of eye appeal. His sire is the full brother to "Rock Star", the '08 Ohio State Fair Champion, owned by Mom's Tunis.

**3-Yearling Ewe**  
**RQL Farms 1065**

**B:** 3/30/2010 Twin RR  
**S:** Bruns Tunis 0819 26452  
**D:** Bartholomew 0121 15724

We had lots of late ewe lambs last year. So some never got shown. This girl came from the bred ewes we bought from Bruns' and we are keeping her twin in our flock. Lots of quality genetics in this ewe.

**4-Fall Ewe Lamb**  
**RQL Farms 1102**

**B:** 10/29/2010 Twin RR  
**S:** RQL Farms 0833 25645  
**D:** RQL Farms 0807 25638

A flashy eye catching ewe with great color. She is sure to be a stylish addition to any flock. Her dam was in our show flock for two years and her sire is a champion genetics. We are keeping her twin as a fall show ewe.

**5-Spring Ewe Lamb**  
**RQL Farms 1115**

**B:** 1/29/2011 Single  
**S:** Kleman 36 20851  
**D:** RQL Farms 0927 27195

She will test at least QR. The dam of this ewe was in our show string for two years and she comes from one of our most consistent show animal lines. A "Danny Boy" daughter, this girl has great size and bone and is sure to be a show ring performer. She will be futurity nominated.

# TUNIS

**6-Spring Ewe Lamb**  
**RQL Farms 1122**

**B:** 2/4/2011 Single  
**S:** Brown Family 68 27680  
**D:** RQL Farms 0844 25987

Not DNA tested but both parents are RR. From our Seavey line, she has amazing color and style. This ewe lamb is sired by our new Brown ram and his lambs are going to figure prominently in our show string this year. She will be futurity nominated.

*Consigned By*  
**DARLING TUNIS**

Jim & Louise Dunham  
8566 Co Rd 28, Zanesfield, OH 43360  
H: 937/465-8299 ~ C: 937/441-6018  
Email: tunis@bright.net

**7-Yearling Ram**  
**Darling 0030**

**B:** 3/15/2010 Single RR  
**S:** Hotis 108 18290  
**D:** Darling 198 Tw 20717

A yearling ram out of "Lyle" and the brood line that produces John Bruns' "Charlie & Redman"! He's loaded with meat.

**8-Spring Ram Lamb**  
**Darling 1117 or 1118**

**B:** 2/25/2011 Twin  
**S:** Hotis 108 18290  
**D:** Darling 124 16947

Our best brood line crossed with "Lyle"—the '04 NAILE Reserve Champion Ram. "Lyle" has lambs in more than 20 states...He must be doing the job!

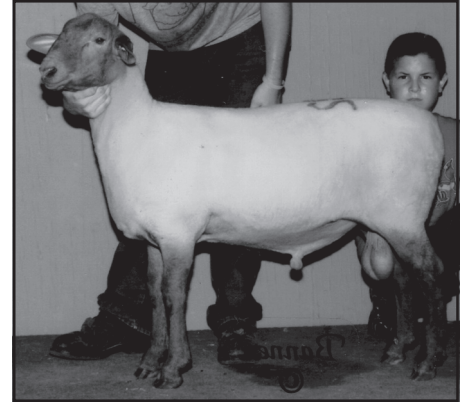
*Consigned By*  
**JACCI ERWIN TUNIS**

Jacci Erwin  
14101 Boundary Rd  
Richwood, OH 43344  
H: 740/943-3792 ~ C: 937/578-8303  
Email: dcerwin4@hardinnet.com

**9-Yearling Ewe**  
**JET 1015**

**B:** 2/19/2010 Twin  
**S:** "Stuart" Niese 501 20867  
**D:** Triple S 651

A correct, upheaded ewe sorted from a pen of the best yearlings we have raised. She will be the last "Stuart" ewe offered at a sale.



Top Selling Ram Lamb at \$1100 in the 2010 Midwest Stud Ram Sale. An Ohio entry sold to Iowa.

**10-Spring Ewe Lamb**  
**JET 1100**

**B:** 1/24/2011 Single  
**S:** Triple S 627 22868  
**D:** RQL 0926 27194

We will Codon test prior to sale.

*Consigned By*  
**KALEB SCHAKELS**  
**TUNIS**

Kaleb Schakel  
5715 E 300 S-Oxford, IN 47971  
H: 765/412-8684 ~ C: 765/412-8686  
Email: millennium@localline.com  
Web: www.millenniumfarmsin.com

**11-Spring Ram Lamb**  
**KST 1105**

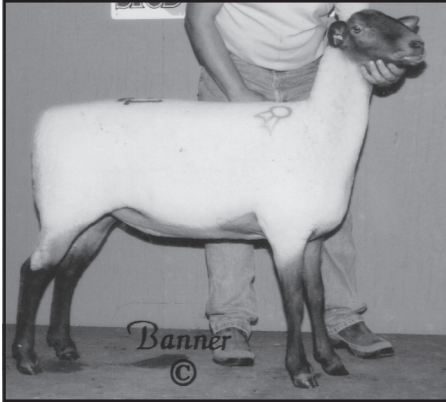
**B:** 3/2/2011  
**S:** "Red Label" Uptown 906  
**D:** "Maddie"  
Moms Tunis 388 27966

This stud prospect is Kaleb's first offering for sale...and a dandy he is! Sired by "Red Label", '10 National Champion Ram and NAILE Champion Ram. Also, '09 NAILE Reserve Champion Ram, this is a great start to put these outstanding genetics to work. "Maddie" was the '10 Champion Ewe at the Midwest Preview Show. Kaleb campaigned his start in the Tunis breed with this show ewe, taking several top honors and much success in the show ring. Kaleb is excited to promote the Tunis breed and bringing one of his best to the Midwest Sale to offer you the opportunity to put him in your show flock and/or breeding program and have the success he has had!

**MAIL BIDS & DELIVERY**  
Call **ASSISTANCE**  
**573/442-8257 AVAILABLE**

# MIDWEST STUD RAM SALE

# TUNIS



Reserve Champion Yearling Ewe at the 2010 Midwest Stud Ram Sale. Sold to Virginia at \$1,050.

*Consigned By*  
**CRAFTS FARM**

Don Craft  
307 W Columbia St., Flora, IN 46929  
H: 574/967-3091 ~ C: 765/490-6619

### 12-Spring Ram Lamb

#### Crafts 11-4

B: 1/29/2011 Twin QR  
S: LT Stumpe 326 26048  
D: Stumpe 329 25866

This ram was Reserve Ram at the NAILE. The dam is a good Stumpe ewe that goes back to Brown Family Tunis.

### 13-Spring Ram Lamb

#### Crafts 11-22

B: 2/16/2011 Twin QR  
S: Uptown 906 207265  
D: Crafts 9-30 27546

The sire of this ram, "Red Label" was National Champion Ram at Indianapolis and at the NAILE for Uptown Farms. Dam is out of a Stumpe ewe.

### 14-Spring Ewe Lamb

#### Craft 11-9

B: 1/31/2011 Single QR  
S: Garey  
D: Stumpe 323 26046

Sire of this ewe was 2nd Place Pair of Ram Lambs at the National Show in Indianapolis.

### 15-Yearling Ewe

Information Sale Day  
S: Uptown 912 27266

**Substitute Entries  
Will Be Identified  
With a Line  
Under the Lot Number**

*Consigned By*  
**BRUNS TUNIS**

John & Irene Bruns ~ 419/925-4712  
7808 St Rt 119-Maria Stein, OH 45860

### 16-Yearling Ewe

#### Bruns Tunis 1022

B: 3/19/2010 Twin QR  
S: "Big Tom"  
Bruns Tunis 0819 RR 26452  
D: Bruns Tunis 22 QR 19245

The sire and the dam are sired by "Redman" BT 8. This yearling can still grow. She will make a great brood ewe with a ton of potential for her future offspring!

### 17-Spring Ram Lamb

#### Bruns Tunis 1103

B: 1/28/2011 Twin QR  
S: "Big Tom"  
Bruns Tunis 0819 RR 26452  
D: Trio Tunis 106 QR 20414

This ram is a half brother to our '10 Res. Champion National Ram "Butterknife". Both dammed by TT 106. He also is double bred back to "Redman" BT 8 or late senior stud ram that produced many winners for us and others in the breed!

### 18-Spring Ewe Lamb

#### Bruns Tunis 1106

B: 2/22/2011 Twin RR  
S: Bruns Tunis 0915 QR 26823  
D: POW 907 RR 27051

This fancy ewe lamb is a half sister to the High Selling Ewe at the '10 National Show & Sale at Wooster, OH, for \$2300! They are both sired by BT 0915, whose dam is "Winnie" BT33, our '06 National Champion Ewe!



1st Fall Ewe Lamb. She went on to win at Louisville!

*Consigned By*  
**UPTOWN FARMS**

Matt & Kate Lambert  
1105 N Main St., Brookfield, MO 64678  
H: 660/541-1480 ~ C: 660/541-0468  
uptownsuffolkshamps@hotmail.com  
Web: www.uptownsheep.com

### 19-Yearling Ram

#### Uptown 1017

B: 3/6/2010 Twin  
S: "Red Label"  
Uptown 906 27265  
D: "Double Shot"  
Stumpe 369 26058

Since we will be staying home more with the new baby this year, we are selling a lot of the show string and he is one of them! 1017 was 2nd in the March class at NAILE last year, and caught a lot of people's eye. He is young and still very green but shows great promise as a stud buck and show buck. Sired by "Red Label", last year's National Champion Ram, his mother also won her class at NAILE in '09.

### 20-Yearling Ewe

#### Information Sale Day

We haven't picked out our yearling ewe. We bred most of the yearlings this year knowing we wouldn't be showing very much but most likely will be a "Red Label" daughter. We showed two of them at NAILE, they were part of our champion flock and both stood in the top five in class. The '10 "Red" daughters are young..all March and later born, but still very exciting.

### 21-Spring Ram Lamb

#### Uptown 1107

B: 2/18/2011 Single  
S: "Red Label"  
Uptown 906 27265  
D: C Garey 0180 24126

This lamb is genetically very exciting and an eye appealing ram as well. Another "Red Label" son, his mother is a "Goliath" daughter. "Goliath" is a full brother to "Bottle Baby" who is a "Red Label's" mother, and was '07 Reserve National Champion Ewe. This all makes this ram lined up nicely and a solid genetic pedigree that will be very exciting. "Red Label" is our '10 National Champion Ram sired by a "RedMan" son, who was National Champion for Bruns Tunis.

### 22-Spring Ewe Lamb

#### Uptown 1102

B: 1/15/2011 Single  
S: Uptown 912 27266  
D: Uptown 825 27915

Her sire is a paternal brother to "Red Label". Dam is a "Bob" granddaughter. We are able to offer her because her mother is still young.

# MIDWEST STUD RAM SALE

## 23-Spring Ewe Lamb

### Uptown 1108

B: 2/20/2011 Twin  
S: "Red Label"  
Uptown 906 27265  
D: Uptown 805 25746

A "Red Label" daughter that is pretty interesting. Her mother was a class winner at NAILE as a yearling and is a "JethRRo" daughter. Her grandmother was also a class winner at NAILE. We are only able to offer this ewe lamb because she has a twin sister at home. This is probably one of our flashier females...we think you'll like her. Check our website for pictures of entries closer to Sale time.

Consigned By

## STUMPE FAMILY TUNIS

Kelly Stumpe ~ 636/357-8227  
8922 Clibourn Rd.  
Russellville, MO 65074  
Email: stumpesheep@yahoo.com

## 24-Yearling Ewe

### Stumpe 461

B: 2/12/2010 Single  
S: "Willie" Brown Family 2 21135  
D: HGA

Check out our entries on the MO Tunis website, closer to the Sale.

## 25-Yearling Ewe

### Stumpe 463

B: 2/17/2010 Single  
S: "Willie" Brown Family 2 21135  
D: Bartholomew 03-57 18393

Full sister to "Razzor" the 1st Place Spring Ram Lamb and High Selling Ram at the '07 Tunis Summer Sale. S&T 709 granddaughter.

## 26-Yearling Ewe

### Stumpe 472

B: 3/16/2010 Single  
S: Craft  
D: Stumpe 341

"Willie" grandson and a "Willie" daughter.

## 27-Spring Ewe Lamb

Information Sale Day

## 28-Spring Ewe Lamb

Information Sale Day

We have a super deep set of ewe lambs this year. We will ring two "Willie" daughters that will be futurity nominated.

**MAIL BIDS &  
CREDIT CARD PURCHASES  
WILL BE CHARGED A 5%  
CONVENIENCE FEE.**

# TUNIS

Consigned By

## CASS HOLLOW TUNIS

Richard & Karen Schambow  
3501 N Dohs Rd., Evansville, WI 53536  
H: 608/876-6804 ~ C: 719/684-5150  
Email: dschambow@hotmail.com  
www.highpointsuffolks.homestead.com

## 29-Yearling Ewe

### Schambow 316

B: 2/24/2010 Twin  
S: "The Yearling"  
Lawthea 155 24292  
D: Schambow 226 24423

This ewe was part of our Louisville show flock. She was 3rd in the Junior Show and 8th in the open show. Full sister to our top yearling ewe last year and 316's twin sister this year is arguably our best yearling ewe. This family is powerhouse family. 226 was 3rd at NAILE as a yearling in '08, her full sister a year older was Res. Grand Champion Ewe in the Junior Show at NAILE and 2nd in the open show behind our champion ewe, and 226's full sister, a year younger, was Champion Ewe at the '09 IN State Fair and Reserve Grand Champion Ewe at the '09 NAILE Open Show. Their mother was Mayes 324, Grand Champion Ewe at the '05 NAILE Junior Show. On the top side, "The Yearling's" dam was the '06 National Champion Ewe that we had at NAILE last fall. We have two full sisters to 316 born this Spring and the intention is to flush 226 this Fall. Check our website for pictures and more information.

## 30-Yearling Ewe

### Schambow 306

B: 1/16/2010 Single  
S: "The Yearling"  
Lawthea 155 24292  
D: Schambow 261 25932

A really square made yearling ewe. She was 2nd slicked late ewe lamb at NAILE last fall and has continued to grow to a big yearling ewe. 261 was a show ewe as a lamb and again as a yearling. She is a maternal sister to our 1st place January Ewe Lamb at NAILE last fall. We are trying to cut our numbers to reduce a little bit of the workload, so we are selling a top set of Tunis this Summer. Check our website for updates, pictures and Sale information.

## 31-Spring Ram Lamb

### Schambow 564

B: 1/15/2011 Twin  
S: Mom's Tunis MTP 391 27970  
D: Lawthea 154 24291

A big extended ram that stands on good bone. Lawthea 154 was 2nd Yearling ewe at The Big E for Wendy Cameron in '08. This Fall, we plan to use a grandson of Lawthea 154. I think this ram is going to make a Stud buck! All of our entries will be Codan tested and results will be available by June 1st.



A former winner at the National Tunis Show, bred by a consignor to this year's sale.

## 32-Spring Ewe Lamb

### Schambow 553

B: 1/3/2011 Twin  
S: Mom's Tunis MTP 391 27970  
D: Schambow 240 24431

Sharp looking ewe lamb! 240 is a "Tandem" daughter of our Mayes 108, a "272" daughter. "Tandem" sired our '07 Champion Ewe at NAILE and Reserve Grand Champion Ewe at NAILE in '09. If you are looking for a show lamb this Summer, I would check this gal out!

## 33-Spring Ewe Lamb

### Schambow 555

B: 1/6/2011 Twin  
S: Mom's Tunis MTP 391 27970  
D: Schambow 221 27112

221 was showed last year slicked sheared. She is out of "The Yearling" and Mayes 291, the 2003 Champion Ewe at NAILE. I can't enough good things about what MTP 391 did on our group of ewes this spring. He is a large framed, long bodied ram with a ton of front end extension. He was 3rd at NAILE, behind two great rams with more mass and volume, but since our ewes are extremely easy fleshing and massive already, he has been a fantastic choice. Check this ewe lamb out.

## 34-Spring Ewe Lamb

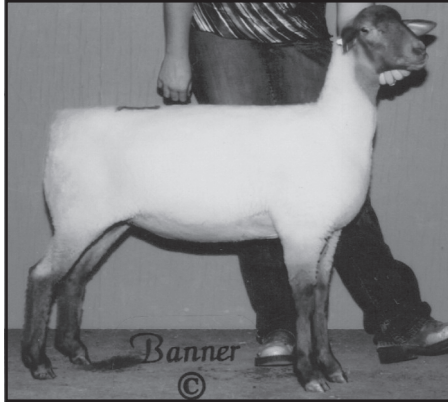
### Schambow 561

B: 2/10/2011 Twin  
S: Mom's Tunis MTP 391 27970  
D: Schambow 283 27121

283 was 3rd at NAILE as a lamb and is a daughter of "The Yearling" and a granddaughter of Mayes 375, the mother of our \$1500 top selling ram in 2008. Mom's Tunis MTP 391 is a "Rockstar" son out of J+J Farm 76. This lamb and her twin sister are two fancy lambs. We will sell one and probably show the other one. Again, Codan test results will be available after June 1st on all of our entries.

# MIDWEST STUD RAM SALE

# TUNIS



5th Place Spring Ewe Lamb from Pennsylvania sold to Missouri at \$500 in the 2010 Midwest Stud Ram Sale.

*Consigned By*

## **MISTY LANE FARM**

Eric J Irvine ~ 724/650-4880  
288 Mack Rd-West Sunbury, PA 16061  
Email: canchaser@zoominternet.net  
Web: Misty Lane Farm on Facebook

### **35-Spring Ram Lamb**

Information Sale Day

This lamb will be sired by "RazzoR", our Triple T stud. Its just to hard to choose one yet.

*Consigned By*

## **MOM'S TUNIS**

Barbara Cassell ~ 276/228-2862  
2317 Peppers Ferry Rd.  
Wytheville, VA 24382  
barbaracassell2005@yahoo.com  
Web: www.tunissheep.com

### **36-Yearling Ram**

#### **Mom's Tunis MTP450**

B: 3/9/2010 Twin  
S: Big Time Tunis 715 24561  
D: Mom's Tunis MTP207 24352

A beautiful colored ram with a great top. He won the Slick Shorn Ram Lamb class at the National Show in '10.

### **37-Spring Ewe Lamb**

Information Sale Day

### **38-Spring Ram Lamb**

Information Sale Day

### **39-Spring Ewe Lamb**

Information Sale Day

She'll have great color and conformation. We'll choose one of our best.

### **40-Spring Ewe Lamb**

Information Sale Day

She's too young to choose right now. We'll bring one of the best. Check our website closer to Sale day for more information. We'll DNA test our entire consignment before the Sale.

*Consigned By*

## **TRIPLET RANCH**

Tim, Tammie & Trinity Serafin  
5193 NW Dumbeck Ave  
Albany, OR 97321  
H: 831/809-3751  
Email: trail2win@msn.com  
Web: www.triplettunis.com

### **41-Yearling Ram**

#### **Triple T 1027**

B: 3/7/2010 Twin  
S: Triple T 0902 27390  
D: Bartholomew 08-05 26255

"PatRRon" is quite possibly the most exciting ram to be born at Triple T! He has a tremendous top and dock set. He will be shown slick sheared because he is that good! He is by "Switchblade" who is producing some outstanding slick sheared sheep. His momma was a class winner at NAILE as a lamb.

### **42-Yearling Ewe**

#### **Triple T 1014**

B: 2/7/2010 Twin QR  
S: Triple T 712 24678  
D: Square M 22 24600

Georgous yearling ewe out of a "MRR Big", Champion Ram in '07 and '08 at the NAILE. Her dam is by Triple S 529, Champion Ram at the '05 and '06 NAILE. She will be shown slick sheared. She is also nominated to the National Yearling Ewe Futurity.

### **43-Spring Ram Lamb**

Information Sale Day

The ram lamb crop, this year, was outstanding! This ram will be RR and out of "MRR Big" or "Switchblade". Promises to be a good one!

### **44-Spring Ram Lamb**

Information Sale Day

This ram will be RR and out of "MRR Big" or "Switchblade". Will be a super good buck. See pictures on our website.

### **45-Spring Ewe Lamb**

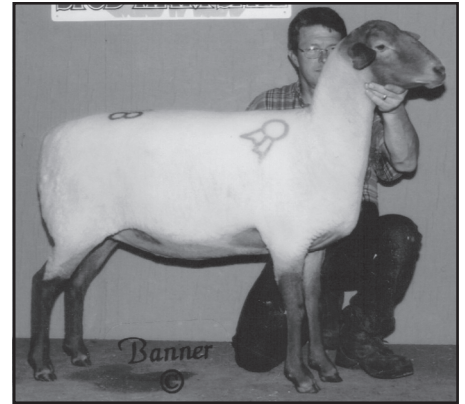
Information Sale Day

The ewe lambs were exceptional, this year! This ewe lamb will be sired by "MRR Big" or "Switchblade". She will be Youth Futurity Nominated.

### **46-Spring Ewe Lamb**

Information Sale Day

This ewe lamb will be sired by "MRR Big" or "Switchblade". She will be Youth Futurity Nominated.



Grand Champion Yearling Ewe from Oregon; sold at \$575 to Missouri in the 2010 Midwest Stud Ram Sale.

*Consigned By*

## **DIRK & MICHELLE WISE**

405 Beaver Dam Rd  
Spring Mills, PA 16875  
H: 814/422-8452  
Email: dfw3@psu.edu

### **47-Spring Ewe Lamb**

Information Sale Day

### **48-Spring Ewe Lamb**

Information Sale Day

Both were sired by the Reserve Champion Triple T Ram last year!

*Consigned By*

## **MAPLE HOLLOW FARM**

Kayla Barkley  
9027 Hyndman Rd  
Manns Choice, PA 15550  
H: 814/623-5756 ~ C: 814/977-8728  
Email: maplehollow@embarqmail.com  
Web: www.maplehollow.net

### **49-Fall Ewe Lamb**

Information Sale Day

### **50-Spring Ewe Lamb**

Information Sale Day

**MAIL BIDS &  
CREDIT CARD PURCHASES  
WILL BE CHARGED A 5%  
CONVENIENCE FEE.**

# MIDWEST STUD RAM SALE