

Consigned By
**LOST RIVER
LIVESTOCK**

Donna Mays
PO Box 14-Howe, ID 83244
H: 208/767-3405 ~ C: 208/541-3405
Email: lostriverdm@yahoo.com
Web: www.lostriverlivestock.com

1901-Yearling Ram

Lost River 10-727

B: 1/9/2010 Single RR
S: "Whispering Horse"

Lost River 08 649 574078

D: Lost River 06-530

The sire, "Whispering Horse" is a full brother to Lost River "HowHi" that was the '08 Grand Champion Owned Ram at the National Junior Show and 1st February Ram Lamb at the National Suffolk Show.

1902-Fall Ram Lamb

Lost River 11-760

B: 10/14/2010 Twin RR
S: "Trail Boss"

Lansing 9-334 RR 587062

D: Lost River 07-612 562022

The sire, "Trail Boss" was 3rd Place Ram Lamb at the '09 NAILE and half brother to "Bismark" the '10 National Grand Champion Ram. "Trail Boss" would have been the biggest and heaviest ram at Louisville last fall, if shown. What an exceptional set of lambs from "Trail Boss".

1903-January Ram Lamb

Information Sale Day

Both Spring ram lambs entered will be RR and from stud ewe families. This years lamb crop has exceeded my expectations for quality with a large selection to choose from.

1904-Early Feb Ram Lamb

Information Sale Day

1905-Fall Ewe Lamb

Lost River 11-762

B: RR
S: "Trail Boss"

Lansing 9-334 RR 587062

D: Lost River 04-431 RR 519781

This fall RR ewe lamb is sired by "Trail Boss" and an "Arrival" daughter. From one of my most favorite old ewes. Milk ability along with longevity are very important in my breeding program along with the ability to be easy fleshing. Lost River 11-762 RR is from one of those best families. This ewe lamb has never had any creep. The only grain she has had is whole oats after weaning.

**MAIL BIDS &
CREDIT CARD PURCHASES
WILL BE CHARGED A 5%
CONVENIENCE FEE.**

SUFFOLKS

1906-January Ewe Lamb

Lost River 11-765

B: 1/5/2011 Twin QR
S: "Trail Boss"

Lansing 9-334 RR 587062

D: Lost River 09-672 583966

My favorite ewe lamb born this year. Out of "Trail Boss" and an "Ultra" daughter. My lead ewe lamb selling this year. She has style, flash, bone and correctness. I am keeping a twin ewe lamb that is every bit as good as Lost River 11-765 as my best replacement this year.

1907-Early Feb Ewe Lamb

Lost River 11-778

B: 2/2/2011 Twin RR
S: "Lariat" Lost River 09-697
D: Lost River 03-387 507739

Doug and Seth Gillespie purchased half interest in "Lariat", my lead ram lamb in '09. The Gillespie's dispersed their Suffolks last Summer. I purchased back their half interest. I only bred five ewes to "Lariat". Lost River 11-778 RR was raised as a twin on an old Cloud "Lightning" granddaughter with one tit. Retaining twin ewe lamb in my flock.

1908-Early Feb Ewe Lamb

Lost River 11-787

B: 2/3/2011 Twin RR
S: "Lonesome"

Kimm 10085 593848

D: Lost River 09-695 583973

First lamb to sell out of "Lonesome" Kimm 10085 a part frame "McLaughlin 0038" line bred son on my frame ewes. "Lonesome" is a great addition to the Lost River flock. Congratulations on MacCauley's slick sheared winners out of two Lost River rams, "HowHi" and "Revolver". Taking the next step forward to slick shearing!

1909-Late Feb Ewe Lamb

Lost River 11-802

B: 2/18/2011 Twin RR
S: "Lariat" Lost River 09-697
D: Lost River 08-654

Another RR ewe lamb that I am keeping her twin as a top replacement out of "Lariat" and a "Crack Shot" Peifer dam. Raising Suffolks since 1950. A closed flock that was one of the first Suffolk flocks to be certified scrapie free. Lost River genetics have predictability that meet the needs of both worlds of show ring and farm flock use.

1910-Late Feb Ewe Lamb

Information Sale Day

2026-March Ewe Lamb

Information Sale Day

2027-March Ewe Lamb

Information Sale Day



2nd January Suffolk Ram Lamb from Illinois that went to Massachusetts at \$1,300 in the 2010 Midwest Stud Ram Sale.

Consigned By
JOHN CORSON

13320 E 900th St-Macomb, IL 61455
H: 309/837-2168 ~ C: 309/255-4606
Email: corsonre@yahoo.com
Web: www.corsonsuffolks.com

1911-Yearling Ewe

Corson 10-LXIA

B: 2/10/2010 Twin RR
S: "Ovation"

Ruby Mnt 860 RR 572835

D: Corson 05-LXIE RR 544261

1912-Yearling Ewe

Corson 10-LXIB

B: 2/10/2010 Twin RR
S: "Ovation"

Ruby Mtn 860 RR 572835

D: Corson 05-LXIE RR 544261

In '08, we won Junior Champion Ram and Ewe at Sedalia on a set of twins. These two yearling ewes are maternal sisters to the Junior Champion lambs.

1913-January Ram Lamb

Information Sale Day ~ RR

1914-January Ram Lamb

Information Sale Day ~ RR

1915-Early Feb Ram Lamb

Information Sale Day ~ RR

1916-Late Feb Ram Lamb

Information Sale Day ~ RR

1917-March Ram Lamb

Information Sale Day ~ RR

Our ram lambs will be sired by "Ovation" Ruby Mtn 860 or "Captain Morgan" Ruby Mtn 905. "Ovation" sired both the Junior Champion Ram and Ewe at the '10 Midwest Sale.

MIDWEST STUD RAM SALE

SUFFOLKS



This Oklahoma entry was 5th Suffolk January Ram Lamb and sold at \$3,250 to Colorado in the 2010 Midwest Stud Ram Sale.

1918-Early Feb Ewe Lamb
Information Sale Day ~ RR

1919-Late Feb Ewe Lamb
Information Sale Day ~ RR

1920-March Ewe Lamb
Information Sale Day ~ RR
Our ewe lambs will be sired by "Captain Morgan" Ruby Mtn 905-3rd Place Yearling Ram at the '10 NAILE.

Consigned By

KEEVER SUFFOLKS

Ryan & Kyle Keever
RR 1 Box 30-Media, IL 61460
H: 309/746-6252 ~ C: 309/337-4075

1921-Yearling Ram
JRK 10-4

B: 2/11/2010 Single RR
S: Pleasant Valley 1145 RR
555957
D: Pleasant Valley 1138 QR
555926

Sired used by Prairie Rose Suffolks of Montana. "Lawman".

1922-Yearling Ram
Keever 10-7

B: 2/12/2010 Twin QR
S: "Grand Torino"
Ruby Mtn 953 RR 582319
D: Keever 4-0210 QR 520545

Dam was Reserve Champion Ewe at the '05 NAILE Junior Show.

1923-Yearling Ram
Keever 10-8

B: 2/12/2010 Twin RR
S: "Grand Torino"
Ruby Mtn 953 RR 582319
D: Keever 4-0210 QR 520545

Twin to ram above.

1924-Yearling Ram
Keever 10-30

B: 3/12/2010 Twin QR
S: Keever 8-39 QR 578975
D: Bracco 3077 522921

1925-Yearling Ewe
Information Sale Day

1926-Early Feb Ram Lamb
Information Sale Day

1927-Late Feb Ram Lamb
Information Sale Day

Lambs will be sired by "Red Label" Luxford 09-1309A RR. "Red Label" won his class at Reno, last year and was second high selling ram. Used as a lamb on half of Ansel's ewes.

Consigned By

RISING SON

Matt Hammer & Glen Anderson
206 Hwy 50-Avoca, NE 68307
H: 402/283-4550 ~ C: 402/429-9812
Email: glen192@nntc.net

1928-January Ram Lamb
1008

B: 1/19/2020 Twin
S: Quam 9057 594530
D: Steinhoff & Sons 289-06
547503

Twin to 1007 ewe lamb. Our best ram lamb.

1929-January Ewe Lamb
1007

B: 2/19/2011 Twin
S: Quam 9057 594530
D: Steinhoff & Sons 289-06
547503

289 always has a good one. She is long and thick. Quam 9057 has put a great set of lambs on the ground for us.

1930-Early Feb Ewe Lamb
102

B: 2/10/2011 Twin
S: Quam 9057 594530
D: Kimm 05214-09072 584325

Consigned By

EYL SUFFOLKS

Denny Eyl
9949 Tammy Lane-Parker, CO 80134
H: 303/841-4169 ~ C: 303/619-7141
Email: dennyeyl@aol.com

1931-Yearling Ram
Eyl 10-1

B: 1/18/2010 Twin RR NN
S: Wagner 04-914 533844
D: Eyl 8-28 572594

1932-Yearling Ram
Eyl 10-38

B: 3/6/2010 Twin RR NN
S: Annuschat Y516 584098
D: Eyl 8-16 572592

1933-Yearling Ewe
Information Sale Day

1934-Yearling Ewe
Information Sale Day

1935-Early Feb Ram Lamb
Information Sale Day

1936-Late Feb Ram Lamb
Information Sale Day

1937-Early Feb Ewe Lamb
Information Sale Day

1938-Late Feb Ewe Lamb
Information Sale Day

1939-March Ewe Lamb
Information Sale Day

Consigned By

CLIFT LIVESTOCK

Kerry, Brigid & Cora Clift
9630 Brick Mill Rd
Ellensburg, WA 98926
H: 509/968-3451 ~ C: 509/929-2079
Email: clift@fairpoint.net
Web: www.cliftlivestock.com

1940-Early Feb Ram Lamb
Clift 1106

B: 2/5/2011 Single RR NN
S: "Buckshot"
Benda 0020 593986
D: Clift 0921 RR 582437

This is a very complete ram out of our new Benda buck "Buckshot", who is sired by "Magnum". Clift 0921 is our biggest "Slapjack" daughter. "Slapjack" is a Gamble "Blackjack" grandson that was 5th at the '08 NAILE.

1941-Late Feb Ram Lamb
Clift 1116

B: 2/17/2011 Triplet RR NN
S: "Buckshot"
Benda 0020 593986
D: Pleasant Valley 1144 RR
566144

Another top ram lamb entry out of "Buckshot". He sired an excellent set of lambs for us this year. Pleasant Valley 1144 is a huge Gamble "Blackjack" daughter who produced our '09 Reserve Junior Champion Ram at Reno All-American Show & Sale.

**Substitute Entries
Will Be Identified
With a Line
Under the Lot Number**

MIDWEST STUD RAM SALE

1942-Early Feb Ewe Lamb

Clift 1102

B: 2/2/2011 Triplet RR NN
S: "Buckshot"
Benda 0020 593986
D: Pleasant Valley 1160 RR
568455

This is a showy, long bodied ewe lamb out of "Buckshot" and a Lost River "Gunfighter" daughter. Pleasant Valley 1160 produced our 2nd Place February Ewe Lamb at the '09 NAILE Show & Sale.

1943-Late Feb Ewe Lamb

Clift 1115

B: 2/15/2011 Twin RR
S: "Buckshot"
Benda 0020 593986
D: Clift 0402 RR 518754

A exciting ewe lamb out of a deep bodied Gamble "Blackjack" daughter, who produced our '10 Grand Champion Ewe at the Northwest Show & Sale. This is our first time consigning to the Midwest Sale, so we are going to bring some top quality lambs. All of our entries will be pictured on our website.

Consigned By

WAYNE SKARTVEDT

30142 F Ave-Radcliffe, IA 50230
H: 515/291-8551

Email: wmskar@netins.net

www.breedingsheepage/skartvedt

1944-Yearling Ram

Skartvedt 4386

B: 2/9/2010 Twin RR NN
S: "Mr Classic"
Heggemeier 07-55 577774
D: KC Suffolks 20 577257

"Classic" sired our 1st Place Class III Ram at last years sale. We purchased Kenny Caprons keepewe lambs when he sold out. 20 has been one of the best producers.

1945-Yearling Ram

Skartvedt 4403

B: 4/22/2010 Twin RR NN
S: "Mr Classic"
Heggemeier 07-55 577774
D: Skartvedt 4252 565877

A very young yrng that won't be as far along as most rams. 4252 is our top producing ewe. Her first lamb was our SlickShearedFall Ewe in '09 & Yrng Ewe in '10. She was 1st as a Fall Lamb at the Nat'l Jr Show, IA State Fair and Louisville. As a yrng, she was Grand Champion Slicked Ewe at the Nat'l Jr Show, 1st at IA & IN, 1st Pair of Yrng Ewes at Louisville. 4252 then had twin fall rams in '09. They were 1st Fall Ram at Sedalia and 3rd Fall Ram at Reno. She had twin rams in April.

MAIL BIDS & DELIVERY

Call **ASSISTANCE**
573/442-8257 AVAILABLE

SUFFOLKS

1946-Yearling Ewe

Skartvedt 4394

B: 2/14/2011 Twin RR NN
S: Skartvedt 4272 577776
D: Skartvedt 4290 577782

4272 was 2nd Slick Sheared Yearling Ram at Louisville. Dam was Reserve Champion Slick Sheared Ewe at the '09 National Junior Show.

Consigned By

FOSTER FARMS

Wyatt Foster

21600 Sacajawea Rd
Sedalia, MO 65301

H: 660/826-4011 ~ C: 660/287-5182
Email: brenda@bmwservices.net

1947-SS Yearling Rams

Foster Farms 10-0143

B: 2/23/2010 Twin
S: D Howard 8023-08 577230
D: Foster Farms 7-Y22 563042

Out of an excellent Howard buck and a meaty ewe. He was a top shower as a lamb last year.

1948-SS Spring Ram Lambs

Foster Farms 11-161

B: 2/20/2011 Twin
S: Joy 1359 583919
D: Foster Farms 9-8 583134

Lamb has a ton of breed character and lots of size for his age.

Consigned By

WAGNER SUFFOLKS

Bob & Jan Wagner ~ 970/420-2336
18025 WCR 128-Nunn, CO 80648

Email: bob@wagner-ranch.com
Web: www.wagnersuffolks.com

1949-Yearling Ram

Wagner 10-2903

B: 2/8/2010 Twin RR NN
S: "Big Dipper"
5 Star J 7146 RR 567774
D: Wagner 2903 QR 545177

A "Big Dipper" son out of one of our top ewe families. Very correct, very big and very complete.

1950-Yearling Ram

Wagner 10-1208

B: 3/3/2010 Twin RR NN
S: "Big Dipper"
5 Star J 7146 RR 567774
D: Wagner 1208 572089

Another outstanding "Big Dipper" son.



Grand Champion Suffolk Yearling Ewe from Colorado was taken to Nevada at \$2,400 in the 2010 Midwest Stud Ram Sale.

1951-Yearling Ram

Wagner 10-J307

B: 1/15/2010 RR NN
S: "Orion"

Wagner 09-1303 584227
D: Johnsons Suffolks 3-07
565038

"Orion" is our "Big Dipper" son and Wagner 10-J307 is a very exciting son of "Orion".

1952-Yearling Ram

Wagner 10-2407

B: 1/17/2010 Twin RR NN
S: Wagner 09-29007 588313
D: Wagner 2407 572080

This "Cheyenne" grandson is out of our 1601 ewe family and that combination has produced a ram that is really "4 dimensional" - height, length, width and depth.

1953-Yearling Ewe

Wagner 4310

B: 2/22/2010 Triplet RR NN
S: "Big Dipper"
5 Star J 7146 RR 567774
D: Wagner 4307 572072

We lost "Big Dipper" last Spring, so this will be the last "Big Dipper" daughter we will be selling. She is the same type and kind as the '10 Midwest Sale Champion.

1954-Yearling Ewe

Wagner 0410

B: 1/19/2010 Single RR NN
S: "Orion"
Wagner 09-1303 584227
D: Johnsons Suffolks 4-07
565039

"Orion" is a "Big Dipper" son and this ewe has all the size, style and class we expect from this breeding.

MIDWEST STUD RAM SALE

SUFFOLKS



A Missouri buyer claimed this Reserve Junior Champion Suffolk Ewe Lamb from Pennsylvania at \$550 in the 2010 Midwest Stud Ram Sale.

1955-Fall Ram Lamb

Wagner 10-52007

B: 10/3/2010 Single RR NN
S: Wagner 09-2907 588313
D: Wagner 5207 572071

This is a nice a Fall ram lamb as we have raised Very correct, stylish and big framed.

1956-Fall Ram Lamb

Wagner 10-2007

B: 9/27/2010 Twin RR NN
S: "Orion"

Wagner 09-1303 584227
D: Wagner 2007 572074

Wagner 2007 is the dam of our '10 Midwest Sale Champion Ewe. "Orion" is a "Big Dipper" son.

1957-Fall Ram Lamb

Wagner 10-J308

B: 9/26/2010 Twin RR NN
S: "Orion"

Wagner 09-1303 584227
D: Johnsons Suffolks 3-08
577276

Another great "Orion" son out of a very extreme Johnsons Suffolks ewe.

1958-Fall Ewe Lamb

Wagner 4010

B: 9/29/2010 Twin RR NN
S: Wagner 09-2907 588313
D: Wagner 4006 548591

1959-January Ram Lamb

Wagner 11-4307A

B: 1/14/2011 Triplet RR NN
S: Ruby Mountain 1005 RR
591985

D: Wagner 4307 572072

This is the first lamb we will be selling by our new Ruby Mountain stud. We think this ram works really well on our ewes. You'll like him too.

Consigned By

LYN LEE FARMS

Dr. & Mrs Gerald Clair
146 Clair Lane-State College, PA 16801
H: 814/238-1233 ~ C: 814/234-9622
Email: stctylr@aol.com

1960-Yearling Ewe

Lyn Lee 0089

B: 2/20/2010 Twin
S: KJ Lansing 9-381 587065
D: Lyn Lee 6007 553467

A very complete, good footed female with style to burn. 1/2 sister to our Reserve Junior Champion Ewe at the '10 Midwest Sale.

1961-Fall Ram Lamb

Information Sale Day

1962-Fall Ewe Lamb

Information Sale Day

The fall lambs will be sired by KJ Lansing 9-381. These lambs are very upheaded, long bodied sheep, who are very structurally correct and will continue to grow.

1963-March Ram Lamb

Information Sale Day

1964-March Ewe Lamb

Information Sale Day

Our March entries will be the same caliber as our 1st March Ram Lamb-Reserve Junior Champion Ewe Lamb at the '10 Midwest Sale. Good, solid, complete lambs in an eye-appealing package.

Consigned By

ANNUSCHAT FARMS LLC

Nick & Ron Annuschat
Rt 4 Box 177-Okarche, OK 73762
H: 405/263-7385 ~ C: 405/368-0455

1965-Early Feb Ram Lamb

Information Sale Day

1966-Early Feb Ram Lamb

Information Sale Day

1967-Late Feb Ram Lamb

Information Sale Day

1968-March Ram Lamb

Information Sale Day

1969-Early Feb Ewe Lamb

Information Sale Day

1970-Early Feb Ewe Lamb

Information Sale Day

1971-Late Feb Ewe Lamb

Information Sale Day

1972-Late Feb Ewe Lamb

Information Sale Day

1973-Late Feb Ewe Lamb

Information Sale Day

1974-March Ewe Lamb

Information Sale Day

1975-March Ewe Lamb

Information Sale Day

Consigned By

KNUTZEN SUFFOLKS

Russ & Sue Knutzen
2140 Rd 304-Edgar, IL 68935
H: 402/284-2328 ~ C: 402/469-6836
Email: russandsue@windstream.net
Web: www.knutzensuffolks.com
VFSCP ~ 02/2007

1976-Yearling Ram

Knutzen 10L15

B: 2/7/2010 Twin RR NN
S: Luxford 05-1260A RR 54388
D: Knutzen 5S13 557569

1st Place Spring Ram Lamb in the Nebraska Class at the '10 NE State Fair. Member of the 1st Pair NE Class at the NE State Fair. Leased to Pat Hodges last fall. He is very satisfied with the lambs. Talk to him about this ram at 402-309-0008. Note the

1977-Yearling Ewe

Knutzen 10L7

B: 2/4/2010 Single RR NN
S: Luxford 05-1260A RR 543888
D: Lost River 08-652 574315

7th Place Early February Ewe Lamb at the '10 NAILE. Sire is the stud Benda's used so successfully. Dam is double bred "Stroker Ace". Also has "Strok-n-It" in pedigree. Lots of Red in pedigree.

1978-Yearling Ewe

Knutzen 10L27

B: 2/16/2010 Single RR NN
S: Luxford 05-1260A RR 543888
D: Knutzen 7A31 569882

7th Place Late February Ewe Lamb at NAILE. The two best bred ewes that I have ever sold with Luxford 05-1260A...you can't go wrong.



the Sedalia Chamber of
Commerce for Room Reservations. Sedalia
Motels are generally sold out, but the
Chamber keeps a daily tab on Area Motels
with rooms available, or can refer you to
private homes near the fairgrounds that
rent rooms.

1/800/827-5295
660/826-2222

MIDWEST STUD RAM SALE

Consigned By
**SERVERSON
SUFFOLKS**

Brian Severon ~ 301/649-2307
740 County Rd 146
Carpenter, WY 82054
seversonsuffolks@rtconnect.net

1979-Early Feb Ram Lamb

Severson Suffolks 106

B: 2/14/2011 Twin RR NN
S: Haley Sheep Co 65 563962
D: Severson Suffolks 733
562652

Lamb has a smooth front with a solid top.

1980-Late Feb Ram Lamb

Severson Suffolks 113

B: 2/18/2011 Twin RR NN
S: Haley Sheep Cp 65 563962
D: Severson Suffolks 607
547393

Solid lamb. A lot of power in its background.

1981-March Ram Lamb

Severson Suffolks 122

B: 3/1/2011 Twin RR NN
S: Haley Sheep Co 65 563962
D: Severson Suffolks 730
562649

Fast growing and keeping up with the earlier lambs.

Consigned By
LOFINKS SUFFOLKS

Larry Lofink
6110 Westedt Rd
Cheyenne, WY 82009
H: 307/635-0608 ~ C: 307/631-2504

1982-January Ram Lamb

Information Sale Day

1983-Early Feb Ram Lamb

Information Sale Day

1984-January Ewe Lamb

Information Sale Day

1985-Early Feb Ram Lamb

Information Sale Day

All my lamb entrys will be sired by Lofinks "Casper" 739-a powerful "Rooster" 319 son, who was a past Grand Champion at WY State Fair, or Lofink 03 or Lofink 026, two big good looking sons of "Casper". Lofink 03 and Lofink 026 were Champion Pair of Ram Lambs and members of the Champion Get of Sire. 026 moved on to become the Grand Champion Ram and member of our Supreme Champion Flock at the '10 WY State Fair. I am unable to choose at entry time, but rest assured, they will be loaded and RR NN.

SUFFOLKS

Consigned By
**BAUMGARTNER
SUFFOLKS**

Jerry Baumgartner
2220 71st St-Avoca, MN 56114
H: 507/335-7739 ~ C: 507/227-9408
Email: jerryb@frontiernet.net

1986-January Ram Lamb

1156

B: 1/14/2011 Twin
S: 5 Star J 8142 RR 577053
D: Baumgartner Suffolks 0514
538255

1156 is long bodied and straight topped. 5Star J 8142 was Reserve Champion Ram at the '09 Midwest Sale. 0514 has raised a couple of stud rams in the past.

1987-Late Feb Ram Lamb

1186

B: 2/16/2011 Twin RR
S: 5 Star J 8142 RR 577053
D: KC Suffolks TR-15 RR 565362

1186 is well balanced, level topped and good hipped. TR-15 is sired by "Walter". 5 Star J 8142 has sired another great set of lambs for us.

Consigned By
ARNDT ACRES

Ron & Gail Arndt ~ 952/466-5876
11775 Co Rd 50
Norwood, MN 55368

1988-January Ram Lamb

Information Sale Day

1989-January Ewe Lamb

Information Sale Day

Consigned By
**RANDY DOMBEK
FAMILY**

2422 290th St-Ivanhoe, MN 56142
H: 507/694-1427 ~ C: 507/530-5938
Email: rdombek@hotmail.com

1990-January Ram Lamb

Dombek Family 2369 RR

B: 1/18/2011 Single
S: Benda 8115 579608
D: Dombek Family 1834 545333

The sire is out of "Easy Rider", the sire of the NAILE Champion Ewe in '09. Dam is a 6 year old daughter of a Meyer Farms ram by "Sea Biscuit". Jeff Benda and I used a full brother this ram last year with impressive results.



This 4th Place Suffolk Yearling Ram from Indiana went to Minnesota at \$2,000 in the 2010 Midwest Stud Ram Sale.

Consigned By
PUMPHREY FARM

Keith Pumphrey
356 Chamberlain Rd
Walla Walla, WA 99362
H: 509/529-0140 ~ C: 541/760-7930
Email: c_pumphrey@hotmail.com
Web: www.pumphreysuffolks.com

1991-Yearling Ewe

Pumphrey 10004

B: 1/3/2010 Single
S: "Full Tilt" Millers 577615
D: Pumphrey 709 560819

A nicely balanced ewe sired by the supersized Millers "Full Tilt" which was shown to an 8th place finish at NAILE. Dam is sired by Luxfords "Rommel" which was the Reserve Champion Ram at Reno and sired the Reserve National Champion Ewe.

1992-Yearling Ewe

Information Sale Day

S: "CJ" 5 Star J 9162 583607

"CJ" has stretched and elevated our ewes giving them an extra level of show ring appeal. This is a late born ewe that has really hit her stride lately.

1993-January Ram Lamb

Information Sale Day

1994-Early Feb Ram Lamb

Information Sale Day

1995-January Ewe Lamb

Information Sale Day

1996-Early Feb Ram Lamb

Information Sale Day

MIDWEST STUD RAM SALE

SUFFOLKS



A \$2,200 Oregon Suffolk Ram Lamb that won the January Class and sold into South Dakota at the 2010 Midwest Stud Ram Sale.

1997-Late Feb Ram Lamb

Information Sale Day

Spring lambs are either sired by Millers "Full Tilt" which is the "Leo" & "Otis" line, he placed 8th at NAILE weighing in at 450lbs or sired by Pumphrey 9009 which is a son of Reams class winning yearling ram at Reno sired by "Ezekiel", 9009's dam is our largest Luxford "Rommel" daughter. "Rommel" was Reserve Champion at Reno and sired the Reserve National Champion Ewe.

Consigned By

DON-AL'S

Allan & Dona Miller

5815 Oakwood Rd-Brillion, WI 54110

H: 920/756-3279 ~ C: 920/242-0897

1998-January Ram Lamb

Information Sale Day

1999-Early Feb Ewe Lamb

Information Sale Day

These lambs will be sired by either Eyl 9-19 583649 or Quam 9065 RR NN 593790.

Consigned By

HAWKINS FARM SUFFOLKS

Joy Hawkins

30737 Green Valley Rd

Shedd, OR 97377

H: 541/491-3750 ~ C: 541/990-2913

joyhawsuffolks@peoplepc.com

2000-January Ram Lamb

B: RR NN

S: "Smackdown's JB"

Hawkins 0802 RR NN 571150

With only 5 lambs weaned (90 days old) at entry date (April 5) it is virtually impossible to select the exact entries at this point in time.

2001-January Ewe Lamb

B: RR NN

S: "Smackdown's JB"

Hawkins 0802 RR NN 571150

90-100% of the entries will be sired by "Smackdown's JB"...a home-grown stud who has sired many Champions.

2002-Early Feb Ram Lamb

B: RR NN

S: "Smackdown's JB"

Hawkins 0802 RR NN 571150

"Smackdown's JB's" lowest placing was 3rd at the NAILE as a ram lamb.

2003-Early Feb Ewe Lamb

B: RR NN

S: "Smackdown's JB"

Hawkins 0802 RR NN 571150

Hawkins entries will be the same matings as last year's Midwest consignment with only 2 out of 11 head consigned.

2004-Late Feb Ewe Lamb

B: RR NN

S: "Smackdown's JB"

Hawkins 0802 RR NN 571150

"Smackdown's JB" lambs are correct, stylish, level topped, sound on their feet and legs, good headed, big boned and most importantly productive.

2005-Late Feb Ram Lamb

B: RR NN

S: "Smackdown's JB"

Hawkins 0802 RR NN 571150

"Smackdown's JB's" mated to the same ewe base, makes the same winning combinations as last year's Sedalia and Reno. With the lamb being later...only the sophisticated buyers will realize their full potential.

2006-March Ewe Lamb

B: RR NN

The March lambs could be out of "Stormy Star", a home-grown ram out of JB's mother and a 5 Star J ram.



2nd Late Suffolks Spring Ram Lamb from Illinois; sold at \$850 to Texas in the 2010 Midwest Stud Ram Sale.

2007-March Ram Lamb

B: RR NN

Hawkins 1009 is a "Larry" son that I used on Smackdown daughters and JB daughters as a clean up ram. The later lambs will be out of him.

Consigned By

CAHILL SUFFOLKS

Pete Cahill

17006 W Cahill Rd-Brimfield, IL 61517

H: 309/446-3237 ~ C: 309/678-0495

Email: pcahill@elmnet.net

2008-Fall Ram Lamb

Cahill 5310

B: 9/15/2010 Single RR NN

S: "Brutus"

Corson 09-6757 583154

D: Bierle Suff 8376B 588876

This guy will catch your attention.

2009-January Ram Lamb

Cahill 1811

B: 1/21/2011 Single RR NN

S: "Brutus"

Corson 09-0757 583154

D: Dreher 1214 590187

Fast growing, heavy boned and strong top.

2010-Late Feb Ram Lamb

Cahill 2811

B: 2/17/2011 Single RR NN

S: "Brutus"

Corson 09-6757 583154

D: Cahill 9-9 582123

Stylish and has looked good from day one.

2011-Fall Ewe Lamb

Cahill 5210

B: 9/4/2010 Single RR NN

S: "Brutus"

Corson 09-6757 583154

D: Cahill 19-9 594095

2012-Fall Ewe Lamb

Cahill 5410

B: 9/15/2010 Single RR NN

S: "Brutus"

Corson 09-6757 583154

D: Bierle Suff 8815W 587661

A couple of real nice fall ewes.

2013-January Ewe Lamb

Cahill 1711

B: 1/15/2011 Single RR NN

S: "Tuf" Ruby Mt Shp954 582318

D: Annuschat W351 574663

Bred right...a nice addition to any flock.

2014-Early Feb Ewe Lamb

Cahill 2111

B: 2/10/2011 Single QR NN

S: "Tuf"

Ruby Mnt Shp 954 582318

D: Cahill 13-6 551748

MIDWEST STUD RAM SALE

2015-Late Feb Ewe Lamb

Cahill 2911

B: 3/2/2011 Single QR NN

S: "Brutus"

Corson 09-6757 583154

D: Dreher 9-1066 590178

An outstanding March ewe lamb...stylish and long.

Consigned By

JUNTUNEN FAMILY SUFFOLKS

Duane & David Juntunen

18659 439th Ave-Vienna, SD 57271

H: 605/881-3374 ~ C: 605/628-2949

2016-Yearling Ewe

Juntunen Family 1031

B: 1/27/2010 Twin RR

S: Dreher 8-1151 RR 579722

D: Juntunen 5-63 545634

The sire of this yearling ewe is sired by Luxford 17-1230A. Her dam goes back to Barzel 3014 that is sired by Bierle's "Protocol".

2017-Fall Ram Lamb

Juntunen Family 10-9

B: 9/24/2010 Single RR

S: "DD Big Foot"

Juntunen Family 9-25 585696

D: Juntunen Family 6-63RR
548694

"DD Big Foot" was the Senior Champion Bred & Owned at the '10 National Jr Show. He is sired by Swenson 7-08 that goes back to "Stroke-N-It". This lambs dam goes back to Barzel and Bierle breeding on both sides.

2018-Fall Ewe Lamb

Juntunen Family 10-10

B: 9/24/2010 Single RR

S: "DD Big Foot"

Juntunen Family 9-25 585696

D: Juntunen Family 7-63 RR
566508

Another "DD Big Foot" lamb. The dam of this lamb goes back to Barzel 3014, which is out of Bierle "Protocol".

2019-Fall Ewe Lamb

Juntunen Family 10-12

B: 9/27/2010 Single RR

S: Dreher 9-1050 RR 590172

D: Juntunen Family 9-57 585670

The sire is sired by Dreher 6244, which goes back to Corey breeding. This lamb's dam is also sired by Dreher 1151, which is sired by Luxford 17-1230A, that goes back to "Sticky Business".

**MAIL BIDS &
CREDIT CARD PURCHASES
WILL BE CHARGED A 5%
CONVENIENCE FEE.**

SUFFOLKS

Consigned By

AMUNDSON SUFFOLKS

Robert Amundson

2451 37th St NE-Larimore, ND 58251

H: 701/343-2862 ~ C: 218/779-7631

2020-Yearling Ram

Amundson 042

B: 2/5/2010

S: Dreher 8-1130 579717

D: Amundson 761 TW 562773

This ram has plenty of size with great bone. His sire, 1130, was 5th in Class at the '09 Midwest Sale...042, is that same style and pattern if not bigger.

2021-Yearling Ewe

Amundson 10-027

B: 2/2/2010 Single

S: Amundson 826 575139

D: Amundson 865 576621

A big, heavy boned ewe, sired by 826, Champion Ram at the '09 ND State Fair, who is sired by Meyers Farm 6067, 5th place ram in '07 in Reno. Excellent head, long ear.

2022-Late Feb Ram Lamb

Information Sale Day

The sire will be Dreher 1130 or "Boss Hogg" Dreher 1001.

2023-Late Feb Ewe Lamb

Information Sale Day

The sire will be Dreher 1130 or "Boss Hogg" Dreher 1001.

Consigned By

WOLFF'S SUFFOLKS

Ron Wolff

10903 96th St SE-Oakes, ND 58474

H: 701/783-4514 ~ C: 701/710-0129

Email: sheep4u@drtel.net

Web: www.wolffssuffolks.com

2024-Early Feb Ram Lamb

Information Sale Day

2025-Early Feb Ram Lamb

Information Sale Day

Our lamb entries will be sired by "ReRun" 8015 Benda, the sire of the '10 National Jr Champion Ram at Louisville and '09 Reserve Jr Champion Ewe Lamb at Louisville or by "Johnny B Good" Corson 10-7, an ET son of "Transformer", a ram we purchased to use on "Re Run" daughter.

2126-Late Feb Ram Lamb

Wolff's 16-11

B: 2/15/2011 Single RR NN

S: "ReRun" 572923

D: Benda 8098 572880



1st Suffolk Yearling Ewe from Indiana sold at \$2,900 to another Indiana breeder in the 2010 Midwest Stud Ram Sale.

Consigned By

BRAASCH LAND & LIVESTOCK

Red & Rev. Cathi Braasch

PO Box 312-Smithfield, NE 68976

H: 308/472-5224 ~ C: 308/991-4460

Email: redbraasch@rcom-ne.com

2028-Yearling Ram

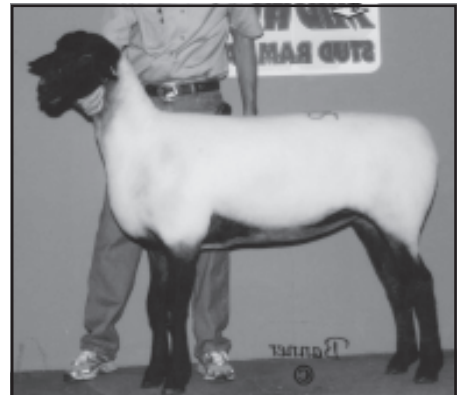
Braasch 201009

B: 2/19/2010 Twin

S: Millers 9-30 586571

D: Leigh 86 524050

A stylish, trim ram, well-suited for the flock that wants to move ahead with a combination of frame, breed character and Miller-bred doability ("Code Red" and "Otis" progeny). Call or email for DNA test result...expect QR/NN or RR/NN.



A top Suffolk Yearling Ewe from Nebraska that went to Texas at \$2,700 in the 2010 Midwest Stud Ram Sale.

MIDWEST STUD RAM SALE

SUFFOLKS



1st Suffolk Yearling Ewe at \$4,100 in the 2010 Midwest Stud Ram Sale. An Indiana entry to an Indiana buyer.

2029-Yearling Ram

Braasch 201017

B: 2/28/2010 Twin
S: Millers 9-30 586571
D: Braasch 2005109 552148

Here's a ram with the frame, muscle, balance and soundness to stand up well in either a slick-shorn or fitted class...and pass it on to his progeny in your purebred flock. Comes from a solid Braasch-bred ewe family with Gamble influence on the dam's side. Add in great Miller influence on the sire's side, going back to Brenda's "Code Rred" and "Otis" rams. Call or email for DNA...expect QR/NN or RR/NN.

Consigned By

LUXFORD SUFFOLKS

Ansel Luxford ~ 406/749-8049
Box 350-Wilsall, MT 59086

2030-Yearling Ewe

Information Sale Day

2031-Yearling Ewe

Information Sale Day

Consigned By

FIVE STAR 'J' FARMS

Richard & Cindy Jones
4439 N 250 W-Patoka, IN 47666
H: 812/779-5210 ~ C: 812/480-8345
Email: jones@sigecon.net

2032-Yearling Ram

Information Sale Day

2033-Yearling Ram

Information Sale Day

2034-Yearling Ram

Information Sale Day

2035-Yearling Ewe

Information Sale Day

2036-Yearling Ewe

Information Sale Day

2037-Yearling Ewe

Information Sale Day

2038-Yearling Ewe

Information Sale Day

2039-Early Feb Ram Lamb

Information Sale Day

2040-Early Feb Ram Lamb

Information Sale Day

2041-Late Feb Ram Lamb

Information Sale Day

2042-Late Feb Ram Lamb

Information Sale Day

2043-Early Feb Ewe Lamb

Information Sale Day

2044-Early Feb Ewe Lamb

Information Sale Day

2045-Late Feb Ewe Lamb

Information Sale Day

2046-Late Feb Ewe Lamb

Information Sale Day

Consigned By

MOUNTAIN HIGH SUFFOLKS

Kendall & Barbara Evans
13200 S Warnock Rd
Oregon City, OR 97045
H: 503/657-7071 ~ C: 503/422-7071
Email: suffolks4ewe@yahoo.com
Web: www.mountainhighsuffolks.com

2047-Yearling Ram

"Rim Shot" Mt High 1210

B: 1/19/2010 Twin RR NN
S: "Cal Junior"
Mt High 1130 571603
D: Mt High 1083 559336

This ram has it all! Long, well-muscled, very heavy boned, super correct on feet and legs, and a beautiful black Suffolk head. He stands 41 1/2" x 43" out of a big-framed Redwood daughter!

2048-Fall Ram Lamb

Mt High 1226

B: 10/15/2010 Twin RR NN
S: "PowerRR Stroke" 582297
D: Mt High 1010 547262

This ram lamb has great length, super front end extension, heavy bone and is very correct. Out of our terrific new Ruby Mountain stud and a super Redwood daughter. He is typical of the excellent conformation of "PowerRR Stroke" lambs.

2049-Fall Ram Lamb

Mt High 1232

B: 11/1/2010 Twin RR NN
S: "PowerRR Stroke" 582297
D: Mt High 1110 571588

A really well-balanced attractive and showy buck, high headed but with plenty of thickness and a square hip. A very long lamb reflecting the style of his dam, an elegant Redwood daughter.

2050-Yearling Ewe

Mt High 1200
B: 1/2/2010 Twin RR NN
S: "Cal Junior"
Mt High 1130 571603
D: Mt High 1066 559325

A beautiful, elegant, high fronted ewe, still growing and youthful in appearance. She is very level topped, good bone and very smooth. Out of one of our largest Redwood daughters.

2051-Fall Ewe Lamb

Mt High 1229

B: 10/20/2010 Twin QR NN
S: "PowerRR Stroke" 582297
D: Mt High 909 518704

Gorgeous head, long, long ears, clean high front. This is a very showy girl! Out of a "Raider" daughter that always produces show lambs!

2052-Fall Ewe Lamb

Mt High 1231

B: 10/22/2010 Twin RR NN
S: "PowerRR Stroke" 582297
D: Mt High 1067 559326

A beautiful lamb with lots of potential, level topped, correct "PowerRR Stroke" has been a super consistent sire. Out of a large framed Redwood daughter. This genetic combination has really clicked!

2053-January Ewe Lamb

Mt High 1248

B: 1/3/2011 Twin RR NN
S: "PowerRR Stroke" 582297
D: Mt High 1132 571579

A big framed lamb with a lot of capacity, heavy bone, high dock, and beautiful head. Out of a massive "High Calibre" daughter that never fails to produce big, vigorous lambs.

**MAIL BIDS &
CREDIT CARD PURCHASES
WILL BE CHARGED A 5%
CONVENIENCE FEE.**

MIDWEST STUD RAM SALE

Consigned By
SCHAKEL SUFFOLKS

Will & Connie Schakel
231 W 1200 N-Knightstown, IN 46148
H: 765/345-5711 ~ C: 317/439-6397
Email: schakel@embarqmail.com

2054-Late Feb Ram Lamb
Schakel 2020

B: 2/19/2011 Triplet
S: Quam 633 562270
D: Schakel 1613 536886

Quam 633 is the outstanding Fall ram that Jerry showed in '07. This is a triple with lots of bone and style. Good breed character.

2055-March Ram Lamb
Schakel 2040

B: 3/3/2011 Single
S: Schakel 1968 596806
D: Schakel 1668 551060

Schakel 1968 is out of MacCauley 1955 which was a national champion for Billy. Heavy bone, correct, stud ram written all over it.

2056-Late Feb Ewe Lamb
Schakel 2019

B: 2/19/2011 Triplet
S: Quam 633 562270
D: Schakel 1613 536886

Quam 633 is the outstanding Fall ram that Jerry showed in '07. This is a triple with lots of bone and style. Good breed character.

2057-March Ewe Lamb
Schakel 2035

B: 3/2/2011 Single
S: R&R Suffolks 431 579137
D: Schakel 1904 584150

Luxford and Double H on the sire side. Silver Dollar and Buckeye Acres on the dam side. Lots of style, character and bone.

Consigned By
NOC SHEEP CENTER

Bart Cardwell/Herdsman
PO Box 310-Tonkawa, OK 74653
H: 580/628-6497 ~ C: 580/716-2550
Email: bart.cardwell@north-ok.edu
www.north-ok.edu/agriculture-science1

2058-Yearling Ram
NOC RE-719-279

B: 1/11/2010 Single RR NN
S: NOC 188 587828
D: OK State 472 544025

'10 National Champion Slick Sheared Ram. He was also the Champion at the '10 Tulsa State Fair and '11 Houston Livestock Show and Rodeo Open Shows.

SUFFOLKS

Consigned By
CRAFTS FARM

Don Craft
307 W Columbia St-Flora, IN 46929
H: 574/967-3091 ~ C: 765/490-6619

2059-January Ram Lamb
Crafts 11-5

B: 1/28/2011 Single RR
S: Bunker Hill 1631 519197
D: Heupel 4081 573798

Look at this rams sire. He has bone, balance, meat, one of the best rams I have raised. His dam is a good Marvin Heupel ewe. Don't miss this one.

2060-Early Feb Ram Lamb
Crafts 11-13

B: 2/19/2011 Twin RR
S: Begg 125 595260
D: Craft 9-6 584821

The sire is a Bunk Hill grandson and the dam was one of our show ewes last year.

2061-Early Feb Ewe Lamb
Information Sale Day

2062-Yearling Ewe

Crafts 10-29
B: 2/11/2010 Twin RR
S: Hodges 431 579137
D: Crafts 8-17

The sire of this yearling ewe is the big Hodge ram that goes back to Luxford 1230B and the dam goes back to a Bunker Hill son.

2063-Yearling Ewe

Crafts 10-59
B: 5/2/2010 Twin QR
S: Begg 441 560831
D: Crafts 6-4

2064-Yearling Ewe

Crafts 10-52
B: 4/2/2010 Twin RR
S: Craft 8-7 577368
D: Craft 3-1 507529

This yearling is out of our Bunker Hill son and the dam is one of our old show ewes.

2065-Yearling Ewe

Crafts 10-38
B: 2/21/2010 Single RR
S: Hodges 431 579137
D: Crafts 7-29 566764

Dam is a good Bunker Hill daughter.



Still another Indiana Suffolk Yearling Ewe in the 5th hold that hit \$1,500 going to Wisconsin in the 2010 Midwest Stud Ram Sale.

Consigned By
UNDERWOOD FARMS

Tom Underwood ~ 712/330-0113
910 6th-Spirit Lake, IA 51360

2066-Yearling Ewe

Dombek Family 2290

B: 1/20/2010 Twin RR
S: KJ Lansing 81085 RR 574118
D: Dombek Family 2160 580260

1st Place Suffolk at Minnesota State Sale.

2067-Yearling Ewe
Underwood 1009 592228

B: 2/6/2010
S: Luxford 05-1221A 543892
D: Schambow 2357 514148

Out of our show flock. Luxford on the top and bottom.

Consigned By
MILLERS LIVESTOCK

Brenda Miller
4657 Marthaler Rd NE
Woodburn, OR 97071
H: 503/792-4502 ~ C: 503/910-0348
millerslivestock@netscape.com

2068-Yearling Ram

Millers 10-48

B: 2/11/2010 Twin RR NN
S: Eagle D8151
D: Millers 7-111

The Eagle D8151 offspring have been fun to watch develop-massive, rugged, and stylish-certainly in demand features-for most Suffolk breeders. This rams dam is the twin sister to the Champion Ram at the W. WA State Fair in '07 and a ram we used for stud service.

MAIL BIDS & DELIVERY
Call ASSISTANCE
573/442-8257 AVAILABLE

MIDWEST STUD RAM SALE

SUFFOLKS



Grand Champion Yearling Ewe at \$5,000. A Nevada entry sold into Pennsylvania in the 2010 Midwest Stud Ram Sale.

SUFFOLKS

2069-Yearling Ram

Millers 10-97

B: 3/6/2010 Twin RR NN
S: Eagle D8151
D: Millers 4-41

Leased to a local purebred breeder for 2011 lamb with great results. This ram's dam is the largest female in our flock-her mother, Millers 0167, was the March Ewe Lamb Class Winner at Louisville in '00. We have used two other sons of Millers 4-41 in our program with much success. She's the kind of ewe you want for the mother of your next stud ram.

2070-Yearling Ewe

Millers 10-67

B: 2/18/2010 Single RR NN
S: Eagle D8151
D: Millers 5-68

Largest female at weaning that we've had in recent memory. Her dam, Millers 5-68, is a full sister to our Champion Ram and Res. Champion Ewe at the '04 OH Suffolk Sale. We have an exceptional group of Eagle D8151 daughters to add to our flock and are letting this one out for public auction. She's special - surely the kind that shouldn't leave our pastures.

2071-Yearling Ewe

Millers 10-119

B: 3/28/2010 Twin QR NN
S: Millers 7-101
D: Millers 8-105

Line bred to the popular MGD stud ram. This ewe's dam was Reserve Champion Ewe at the '09 W. WA State Fair and one of the largest in our flock.

2072-January Ram Lamb

Information Sale Day

2073-Early Feb Ram Lamb

Information Sale Day

2074-Early Feb Ram Lamb

Information Sale Day

2075-January Ewe Lamb

Information Sale Day

2076-Early Feb Ewe Lamb

Information Sale Day

2077-Late Feb Ewe Lamb

Information Sale Day

2078-March Ewe Lamb

Information Sale Day

Spring lambs will be sired by "Leo" Millers 6-54, an "Otis" son, Millers 9-70 or Millers 10-32 both from the "Code Rred" tribe or Millers 10-47 a son of Eagle D8151. To ensure highest quality. Lamb selection will be made closer to sale time.

Consigned By

TROXTELL SHEEP

Johnny & Terrye Troxtell
455 Biggerstaff Rd-Sherman, TX 75090
H: 903/892-6821 ~ C: 903/815-6881
Email: troxjone@aol.com

2078-March Ram Lamb

Information Sale Day ~ RR NN

2080-March Ewe Lamb

Information Sale Day ~ RR NN

Consigned By

HANNAH SLOAN & CODY WRIGHT

Hannah Sloan & Cody Wright
25250 St Hwy 413-Galena, MO 65656
H: 417/236-2010 ~ C: 417/437-7381
Wrightsrockyacres@hotmail.com

2081-Yearling Ram

McGee Sheep Farm 269

B: 3/5/2010 Single
S: Knapke 5431 579247
D: McGee Sheep Farm 19
575428

Consigned By

HOSKINS STOCK FARM

Gary & David Hoskins
1651 255th-Jefferson, IA 50129
H: 515/386-8055 ~ C: 515/370-3239

2082-Yearling Ram

Hoskins 10-35

B: 3/10/2010 Twin
S: "Make a Move"
Ruby Mountain 835 572829
D: Hoskins 77 585237

If it wasn't for a successful flush last fall, these two would not be for sale.

2083-Yearling Ewe

Hoskins 10-34

B: 3/10/2010 Twin
S: "Make a Move"
Ruby Mountain 835 572829
D: Hoskins 77 585237

Our 2 entries are twins to each other. They are both long, tall, straight and have some mass. Their sire "Make A Move", the '09 Midwest Sale Class Winner that we purchased from Cynthia. He has sired 2 excellent crops for us. Last year, he sired our Res. Jr Champion Ewe at the NAILE. Their dam is sired by "Three Beers", 5 Star J 4172, the '05 High Selling Ram at the Midwest Sale. High priced and class winning doesn't make the lambs good but these 2 are.

Consigned By

RUBY MTN SHEEP CO

Cynthia M Huckins
HC 36 Box 33-Spring Creek, NV 89815
H: 775/753-8327 ~ C: 775/741-0789
Email: rubymtsheepco@yahoo.com
www.rubymountainssheepco.com

2084-Yearling Ram

"Mr Lucky" Ruby Mtn 1017

B: 2/17/2010 Twin RR NN
S: "Lucky 13"
Ruby Mtn 913 582307
D: Ruby Mtn 723 566202

"Mr Lucky" has it all...bone, mass, size and stands correct on good feet and legs. At this time, we still own "Lucky 13", if he sells, we will not be parting with this proven stud ram! His twin sister was in our show string last year and will be again this year.

2085-Yearling Ewe

Information Sale Day

For update information, please check our website or feel free to call.

2086-Early Feb Ram Lamb

Ruby Mtn 1103

B: 2/5/2011 Twin RR NN
S: "Johnny Walker" 583151
D: Ruby Mtn 727 563063

1103 is a full brother to "Lady Google" Ruby Mtn 1001, Jr Champion Ewe Lamb & Res Champion Ewe Overall at NAILE and IA State Fair in '10. He is ever bit as special as she is!

2087-Late Feb Ram Lamb

Information Sale Day ~ RR & NN

2088-March Ram Lamb

Ruby Mtn 1145

B: 3/4/2011 Single RR NN
S: "Lucky 13"
Ruby Mtn 913 582307
D: "Ms Leggs"
Ruby Mtn 6121 546895

"Ms Leggs" is a "Strok-n-It" daughter that has turned out a great set of lambs year after year. We retain her daughter in the flock.

MIDWEST STUD RAM SALE

2089-Late Feb Ewe Lamb
Information Sale Day

Consigned By
MACCAULEY SUFFOLK

Bill, Betsey, Chris & Kyle MacCauley
4333 Steelville Rd-Atglen, PA 19310

H: 610/593-2907

Email: maccauley@epix.net

Web: www.maccauleysheep.com

2090-Yearling Ewe
MacCauley 2251

B: 9/3/2009 RR
S: "HoWhi" Lost River 08-648
D: MacCauley 2058

2251 is the twin to our popular fall ewe lamb in last years show flock. We really don't want to part with her, however we have her twin and several sisters now. "HoWhi" is making his mark on our flock. MacCauley 2058 is by 1955 and her dam is one of our old "Indian Outlaw" daughters. 1741's twin was Jr Champion Ewe at the '05 Midwest Sale. If you are looking for a show and brood ewe...check 2251 out!

2091-Yearling Ewe
MacCauley2263

B: 1/7/2010 QR
S: MacCauley 2099
D: MacCauley 1938 RR
by "Gold StRReak"

2263 is a deep bodied, rugged ewe. 2099 is by 1955 by Dreher 5063 who we bought at Reno several years ago. 1938 has turned out to be a great brood ewe and makes good ones every year.

2092-Yearling Ewe
MacCauley 2266

B: 1/8/2010 RR
S: "HoWhi" Lost River 08-648
D: MacCauley 1936
by "Gold StRReak"

2266 is one of the biggest ewes we have ever sold. We have one of the most exciting groups of yearling ewes we have ever raised and just can't keep them all. 2266 has been a favorite from day one and continues to impress. 2266 stands on a super set of feet and legs and is extremely wide down her top and stands on bone any Suffolk breeder can appreciate. 1936 was our show flock in '07 and is a maternal sister to "Ambush".

2093-Fall Ram Lamb
MacCauley 2373

B: 9/1/2010 Twin RR
S: "HoWhi" Lost River 08-648 RR
D: MacCauley 1938
by "Gold StRReak"

2373 is a very structurally sound correct ram that is sure to get your attention. "HoWhi" is our popular Lost River ram that has really worked for us. His dam 1938 is the mother of our High Selling Ewe at the '10 OH Suffolk Sale. Here is one of our very best!

SUFFOLKS

2094-January Ram Lamb
MacCauley 2454

B: 1/24/2011 RR
S: "Revolver" Lost River 05-482
D: MacCauley 2193 by "HoWhi"

2454 is one of the most exciting ram lambs we will be offering this year. "Revolver" is the sire of our popular March ewe lamb in last years show flock. He makes them long and correct. 2193 is a "HoWhi" daughter that goes back to our favorite ewe family.

2095-Fall Ewe Lamb
MacCauley 2375

B: 9/2/2010 RR
S: "HoWhi" Lost River 08-648
D: MacCauley 1932
by "Gold StRReak"

We have a super set of fall lambs and 2375 will fit in any Suffolk breeders program. She is very structurally sound and stands on a super set of feet and legs.

2096-January Ewe Lamb
Information Sale Day

2097-Early Feb Ewe Lamb
Information Sale Day

We have a super set of ewe lambs this year and at entry time, we have too many to pick from. All of our ewe lambs will be futurity nominated.

Consigned By
DAVID RAMBOW
FAMILY SUFFOLKS

David Rambow

10020 CR 50-Cologne, MN 55322

H: 952/466-3369 ~ C: 612/462-5622

2098-Yearling Ram

Rambow Suffolks Y1062

B: 1/11/2010 Twin RR
S: C Steere 9043-07 RR 569812
D: Rambow Suffolks B614 RR
552352

Long bodied ram with good top and hip. Full brother to yearling ram we had success with last year.

2099-Yearling Ewe

B1091 or B1093

B: 2/22/2010 Twin RR
S: "BluetarRR" 5 Star J 3125
508817
D: Rambow Suffolks 0736
574370

Twin young yearling ewes...we will bring the better one.



A Pennsylvania January Suffolk Ram Lamb sold into South Dakota at \$1,700 at the 2010 Midwest Stud Ram Sale.

2100-Early Feb Ram Lamb
Rambow Suffolks B1102

B: 2/1/2011 Twin RR
S: "BluetarRR" 5 Star J 3125
508817
D: Bierle Suffolks 4516G RR
537098

If you are looking for longevity, this ram's sire was 7 1/2 years old and dam is a 2004 model and going strong.

2101-Early Feb Ewe Lamb
Rambow Suffolks B1102

B: 2/7/2011 RR
S: "BluetarRR" 5 Star J 3125
508817
D: Rambow Suffolks 0731
574369

Another "BluestaRR" daughter...they always seem to get big. We nicknamed her dam "Powerhouse" for a reason!

Consigned By
BENDA SUFFOLKS

Matt Benda ~ 507/841-2220

58958 850th St-Alpha, MN 56111

Email: gmbenda@earthlink.net

2102-Yearling Ram

Benda 0027

S: "Cover Charge" 5 Star J
D: Benda 5107

Long, extended ram that we used last year. Dam is a good "Chuckie" daughter.

2103-Early Feb Ram Lamb

Information Sale Day

Will be sired by Dreher 1377. My pick of ram buck lambs last year.

2104-Early Feb Ewe Lamb

Information Sale Day

MIDWEST STUD RAM SALE

SUFFOLKS



This Minnesota 1st Suffolk February Ewe Lamb brought \$875 going to Missouri in the 2010 Midwest Stud Ram Sale.

Consigned By
QUAM SUFFOLKS

Jerry & Rex Quam
8533 Co 30 Blvd
Wanamingo, MN 55983
H: 507/261-8201 ~ C: 507/251-2650
www.quamsuffolksandhampshires.com

2105-Yearling Ram
Quam 866

B: 1/22/2010 ET RR NN
S: Quam 8048 577856
D: Baumgardt 440 537935

Semen collected on this ram. He is a full ET brother to "MaveRRic", who was our lead ram for our '11 lamb crop and sold to Masser's in our farm sale. Another full ET brother was Res. Jr Champion at both IA State Fair and NAILE and we sold part of him to Kevin Lansing. He is a ram worth taking some time to stop and take a look at. We have a full ET brother to him in the Jan. pen and plan on using him this fall.

2106-Early Feb Ram Lamb
Information Sale Day

We have some real good "MaveRRic" and "BB" ram lambs this year. Will know more closer to Sale time.

2107-Early Feb Ewe Lamb
Information Sale Day

Not certain if we will have a ewe lamb in the Sale this year, but be sure to check out the one we are donating the proceeds to support the National Jr Suffolk Show this year in Delaware. All our ewe lambs will be futurity nominated. Photos and extended pedigrees will be posted on our website prior to the Sale.

Consigned By
OAK HILL FARM

Pat Hodges
Box 225-Julian, NE 68379
H: 402/242-2891 ~ C: 402/309-0008

2108-Early Feb Ram Lamb
Information Sale Day

2109-Early Feb Ewe Lamb
Information Sale Day

Lambs will be sired by Luxford 08-1273 or a Luxford 1260 son.

Consigned By
WINDSWEEP RANCH

Chuck Ream ~ 707/459-0707
15100 Hearst Rd-Willits, CA 95490
Email: windswept ranch@starband.net

2110-Yearling Ram
Ream OJD31

B: 2/21/2010 RR
S: "Johnny D" Ream 9L2 586007
D: Ream 2M22 505043

"Johnny D" was Champion at Oregon and the Cow Palace in '10.

2111-Yearling Ram
Ream OZ50

B: 4/21/2010 RR
S: "Ezekiel" Ream 5C37 533678
D: Ream 8L29 572528

OZ50 is the final son of "Ezekiel", who sired the Champion Ram at the Midwest Sale in '09. L29 was Champion at the CA State Fair in '09, and Reserve Champion at Oregon. This last April lamb is my most complete this year.

2112-Fall Ram Lamb
Information Sale Day



2nd Suffolk Fall Ewe Lamb from California sold at \$1,050 to Illinois in the 2010 Midwest Stud Ram Sale.

2113-Yearling Ewe
Information Sale Day

2114-Yearling Ewe
Information Sale Day

Consigned By
ISAIAH BAUCK

38118 510th Ave
New York Mills, MN 56567
218/639-8484 (Darin)

2115-Yearling Ram
Rambow 09-703

B: 9/27/2009 QR
S: C Steere 9000-07
D: Rambow 07-53

Our first experience selling a Suffolk buck. What a kool ram, with a great track record. He was 1st Place Fall Ram at the North American Open and Junior Shows! Also the mother, 07-53, was Reserve Champion Ewe at a past Iowa State Fair. This guy has mass.

Consigned By
KNAPKE SUFFOLKS

Steve Knapke
5188 US 33-Rockford, OH 45882
H: 419/363-3510 ~ C: 614/579-6841
Email: dustin.knapke@gmail.com

2116-SS Fall Ram Lambs
Information Sale Day

Sired by "Fresh Squeeze".

Consigned By
BIERLE SUFFOLKS

Cheryl Bierle ~ 641/344-9475
1365 Hwy 34-Creston, IA 50801
bierlesuffolks@iowatelecom.net

2117-Yearling Ram
Bierle Suffolks

B: Twin RR
S: "C.V. Jr" Bierle 5022 Y RR
D: Bierle 6656P RR

1080P is a very up fronted ram with lots of bone and body. The sire is the son of "C.V. Promise", who was the '03 National Champion at NAILE. This "C.V. Jr" was bigger than "C.V.". The dam is also out of a "C.V." son plus the granddam was out of "C.V."

2118-Yearling Ram
Bierle Suffolks 1045G

B: RR NN
S: Belle Haven 59
D: Bierle 7517 or

Belle Haven 59 is Craig Fetters ram named "Moser". He was the Slick Sheared Champion at the '07 NAILE. VanArkel bred and goes back to "Bravado" and "Pimlico". The dam is one of our tallest ewes. She is double bred "C.V. Promise" and has "Carnegie" and "Chief Justice" in her pedigree. The ram is built like daddy with lots of bone and body.

MIDWEST STUD RAM SALE

2119-Fall Ewe Lamb

Bierle 1068P

B: 12/6/2010 RR
S: Bierle 8362B RR
D: Bierle 8083G RR

The sire is the same as our other Fall ewe lamb. On the dams side, she goes back to VanArkel "nevermore", "Blue Print", and "Priority", plus Bierles "C.V. Promise" and "Protocol". This is a very young Fall ewe lamb. She may not be as big as the earlier lambs but she will hold her own.

2120-Fall Ewe Lamb

Bierle 1065P

B: 10/6/2010 Twin
S: Bierle 8362B RR
D: Bierle 8110 R

The sire is straight Luxford breeding. "Power Plus" on the sire side and "Chief Justice" on the dam side. On the dam side, we have "Protocol" who was by VanArkel's "Blue Print" and on the bottom side, we have "Le Monster" and "A-Train". This Fall ewe lamb has a lot of bone and body with a pretty Suffolk head. A real nice up fronted Fall ewe lamb.

SUFFOLKS

Consigned By

SILVER DOLLAR FARM

Tad Thompson ~ 765/978-0301
2590 N 500 E-Lebanon, IN 46052
Email: thompson.tad@gmail.com

2121-Yearling Ram

Information Sale Day

2122-Yearling Ewe

Information Sale Day

2123-Early Feb Ram Lamb

Information Sale Day

2124-Late Feb Ram Lamb

Information Sale Day

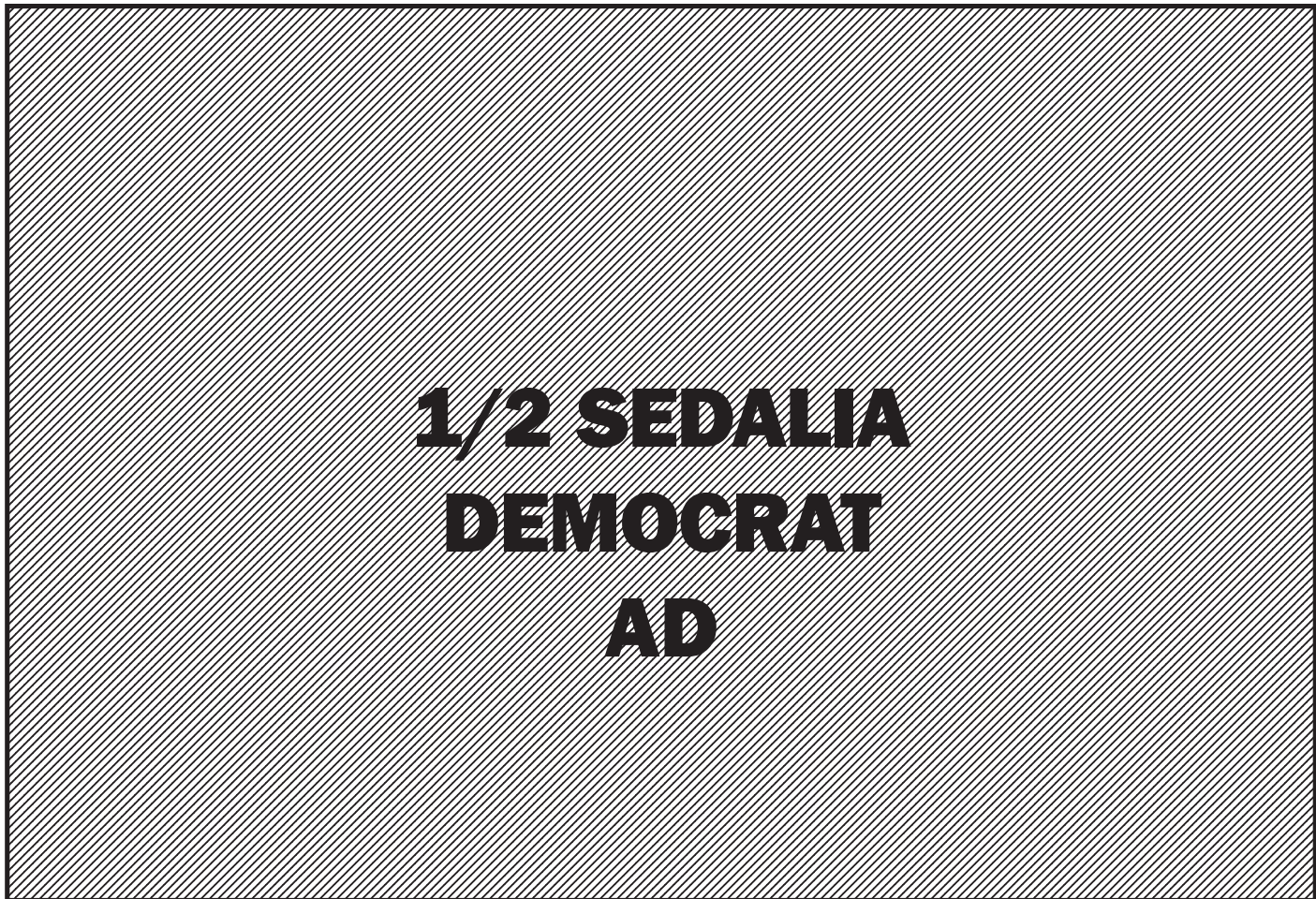
2125-Early Feb Ewe Lamb

Information Sale Day



Reserve Grand Champion Suffolk Yearling Ewe at \$3,800 from Indiana that sold to Pennsylvania in the 2010 Midwest Stud Ram Sale.

**MAIL BIDS &
CREDIT CARD PURCHASES
WILL BE CHARGED A 5%
CONVENIENCE FEE.**



**1/2 SEDALIA
DEMOCRAT
AD**

MIDWEST STUD RAM SALE