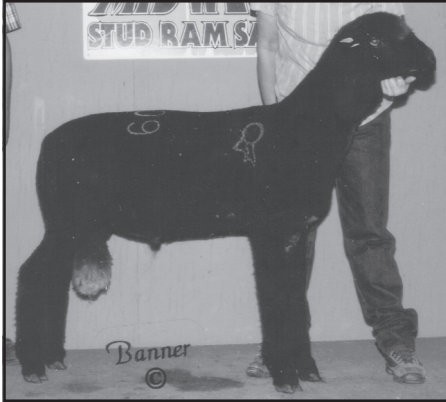


NATURAL COLOREDS



Reserve Champion January Ram Lamb at the 2010 Midwest Stud Ram Sale, sold to Ohio for \$2,800.

1028-Fall Ram Lamb

BJB 10KRRST889B

B: 9/19/2010 Twin
S: BJB 9KRR728 X049127
D: 4BS31B 087082

Sire is a massive son of the RR Kruse ram that was Reserve Champion Rambouillet Ram at Sedalia and out of our 1st Fall Ewe Lamb that was Champion at a past National Natural Colored Show.

1029-January Ram Lamb

BJB 11KRRST18B

B: 1/1/2011 RR
S: BJB 9KRR72B X049127
D: BJB 6SWTT658B 097733

At this time, this is our best ram prospect out of a Southwest 2-12 daughter.

Consigned By
BEL-MAR FARM

Mark & Deborah Bell and
Kodi & Kamron Paulus
4809 Casstown-Clark Rd.
Casstown, OH 45312
H: 937/337-6230 ~ C: 937/216-2331
Email: belmarfarm@frontier.com

1038-Yearling Ram

Bel-Mar Farm 10-02

B: 2/16/2010 Twin RR
S: "Calico Freight Train"
Wolf 7003 098832
D: BMF 1310

This ram is a twin brother to "MoJo" BMF 10-03 that was Reserve Champion Ram at the '10 OH State Fair and KY State Fair open shows.

1039-February Ram Lamb

Information Sale Day

1040-March Ram Lamb

Information Sale Day

1041-March Ewe Lamb

Information Sale Day

The lamb entries were too young at entry time to pick. They will be sired by our two Homestead studs, "New Venture"-'09 Midwest Sale Champion Ram, NAILE Res. Supreme Champion in '09, and Champion Medium Wool in '10 and '09 National Show Medium Champion Ram and Supreme Champion at the OH State Fair in '10 or "Black Jack"-the '10 Midwest Sale Res. Champion Ram and Record Selling \$2800 Ram. The dams of our entries will be out of the '09 Midwest Stud Ram Sale Champion Ewe and Res. Champion Ewe that were both Homestead ewes that were our '09 NAILE 1st Pair Yearling Ewes and 1st & 2nd Place Fine Yearling Ewes or out of Wolf 9117, a "Calico" daughter that was the '10 NAILE Champion Fine Ewe and Supreme Champion Natural Colored Ewe, or the '10 Midwest Stud Ram Sale Champion Ewe entry of Homesteads. All entries are at least QR or better.

Consigned By

BAR J BAR RANCH

Dave & Carla Julius ~ 605/545-5862
329 Line Rd., Box Elder, SD 57719
Email: bar_j_barranch@msn.com

1026-Yearling Ram

BJB 10KRRFS102H

B: 1/22/2010
S: BJB 8KRR869B X49695
D: BJB 6SWTT661H 097735

1027-Yearling Ewe

BJB 0KRRFS93B

B: 1/5/2010 Triplet
S: BJB 8KRR869B X49695
D: BJB 6SWTT658B 097733

Consigned By

HOMESTEAD FARM

Dean & Cathy Gerali
11574 CR 19, Fort Lupton, CO 80621
H: 970/785-6186 ~ C: 303/328-7052
Email: hmstdfarm@aol.com

1030-Yearling Ram

Information Sale Day

1031-Fall Ram Lamb

Information Sale Day

1032-January Ram Lamb

Information Sale Day

1033-February Ram Lamb

Information Sale Day

1034-January Ewe Lamb

Information Sale Day

1035-February Ewe Lamb

Information Sale Day

1036-March Ewe Lamb

Information Sale Day

1037-March Ewe Lamb

Information Sale Day

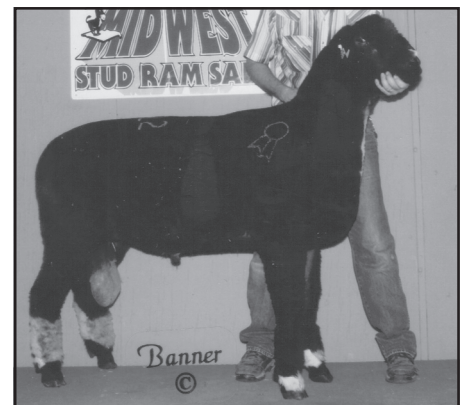


7th January Ram Lamb at the 2010 Midwest Stud Ram Sale sold to Indiana.



the Sedalia Chamber of
Commerce for Room Reservations. Sedalia
Motels are generally sold out, but the
Chamber keeps a daily tab on Area Motels
with rooms available, or can refer you to
private homes near the fairgrounds that
rent rooms.

1/800/827-5295
660/826-2222



Grand Champion Yearling Ram sold into Ohio at \$400 in the 2010 Midwest Stud Ram Sale.

MIDWEST STUD RAM SALE

Consigned By
RUBY'S RANCH

Melinda Ruby-Gruner
18010 N 93rd E Ave.
Collinsville, OK 74021
H: 918/371-2779 ~ C: 918/406-3819

1042-Yearling Ewe

Ruby's Ranch 126

B: 1/23/2010 Twin QR
S: GR 946 X087637
D: Claymon 565 X096001

Ewes were sheared March 12, 2011. All sired by our Hines Sheep Co stud ram.

1043-Yearling Ewe

Ruby's Ranch 123

S: GR 946 X087637

Ewes are at least QR and NN. I may bring another depending on how the girls grow.

Consigned By
**KATHERINE
KUYKENDALL**

12322 Dahl Lane
Richland Center, WI 53581
H: 608/538-3312 ~ C: 336/302-6162
Email: katherinekuykendall@gmail.com
www.kuykendallcustomfitting.com

1044-February Ram Lamb

Information Sale Day

NATURAL COLOREDS

Consigned By
**PINES END
NATURAL COLORED**

Dylan/Sheilina/Jerome/Jerrold Nohner
20291 438th Ave., Erwin, SD 57233
H: 320/420-5354 ~ C: 605/860-1053
Email: pinesenddorsets@yahoo.com
www.pinesendnaturalcoloreds.web.com

1045-Fall Ram Lamb

B: 3/2/2011 Twin
S: "Payback" HF 07-689 102018
D: Cook LT 797 98392

Cook LT 797 was a ewe we bought when we started our Natural Colored flock. She doesn't miss! "Payback" was the High Selling Ram here in '09.

Consigned By
BORCHER SHEEP CO

Weston Borchner
1017 Rd 14, Powell, WY 82435
H: 307/754-3691 ~ C: 307/272-5285
Email: borchner_23@hotmail.com

1046-January Ram Lamb

Borchner F 11031-15

B: 1/22/2011 Twin
S: "Mossy Oak"
Crago M8-7 X102551
D: HF 08-712 102027

1047-January Ram Lamb

Borchner F 11053-16

B: 1/25/2011 Twin
S: "Mossy Oak"
Crago M8-7 X102551
D: Borchner BL89 U13701



3rd January Ram Lamb at the 2010 Midwest Stud Ram Sale was a Wyoming entry.

1048-February Ram Lamb

Borchner F 11145-17

B: 2/16/2011 Single
S: "Mossy Oak"
Crago M8-7 X102551
D: Gupman R99

1049-January Ewe Lamb

Borchner F 11054-9

B: 1/25/2011 Twin
S: "Mossy Oak"
Crago M8-7 X102551
D: Borchner Pr44 00282A

**Substitute Entries
Will Be Identified
With a Line
Under the Lot Number**

MAIL BIDS & DELIVERY
Call **ASSISTANCE**
573/442-8257 AVAILABLE



1st Fall Ewe Lamb at the 2010 Midwest Stud Ram Sale was an Ohio entry going to Missouri at \$400.

**MAIL BIDS &
CREDIT CARD PURCHASES
WILL BE CHARGED A 5%
CONVENIENCE FEE.**



Grand Champion Yearling Ewe was a Colorado entry at the 2010 Midwest Stud Ram Sale, going to Ohio at \$1,500.

MIDWEST STUD RAM SALE