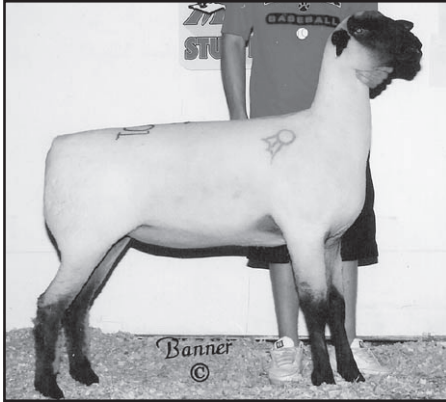


HAMPSHIRE



Reserve Grand Champion Hampshire Fall Ewe Lamb from South Dakota in the 2010 Midwest Stud Ram Sale. She sold into Illinois at \$1,650.

Consigned By

HELD HAMPSHIRE

Jeff & Mary Held

21320 477th Ave-Aurora, SD 57002

H: 605/693-4203 C: 605/690-7033

Email: mhheld@svwireless.com

Web: www.heldhampshires.com

1651-Fall Ram Lamb

Held 10-1106

B: 10/12/2010 1 RR NNP

S: Held 09-2910 NNP RR 588666

D: Held 04-4108 NNP QR 79745C
79745C

A nice patterned ram with excellent type. He is sired by 2910, the Champion Ram and the '09 All-American and SD State Fair. The dam is our favorite ewe, great design and long-level hip, as does her son!

1652-Fall Ewe Lamb

Held 10-1088

B: 10/6/2010 Twin RR NNP

S: Held 09-2910 NNP RR 588666

D: Held 05-3503 NNP RR 89760C

This is a great ewe with tremendous pattern and structure! Has a combination of traits to fit many different show criteria, long level top and hip with exceptionally smooth shoulder with plenty of rib.

1653-Fall Ewe Lamb

Held 10-1107

B: 10/12/2010 Single RR NNP

S: Held 09-2910 NNP RR 588666

D: Held 08-2832 NNP RR 19231D

Perhaps the most stylish female we have ever offered from our flock. Dam is a full sister to "Showmanship Ewe", Champion Ewe at the '08 AAJS and Reserve at the '09 AAJS!

1654-January Ewe Lamb

Held 11-1132

B: 1/12/2011 Triplet NNP

S: Held 07-2708 NNP RR 586766

D: Held 07-3761 NNP QR 97275C

Raised as a triplet, yet has great potential for summer shows. Sired by our senior stud that gave us the nice consignment at the '10 Midwest Sale. These 2708 sheep have exceptional type, structure and balance!

1655-January Ewe Lamb

Held 11-1146

B: 1/28/2011 Triplet NNP

S: Held 09-2910 NNP RR 588666

D: Held 08-3839 NNP QR 13671D

Again triplet raised. Fully expect 1146 will be ready to compete come summer. She has a level hip and great shoulder and neck structure. Numerous show sheep from this lambs' dam line. Granddam is 11 years old with another set of twin ewes.

Consigned By

GENE & MARCI SANFORD

Gene & Marci Sanford~507/645-4989

12529 Canby Ave-Faribault, MN 55021

Email: mgsanford99@gmail.com

1656-Yearling Ewe

Sanford M053

B: 2/8/2010 Twin RR

S: Steffens 954 584436

D: Sanford M807 134640

Super complete Hamp ewe. A member of our 4th Pen of 4 lambs at the '10 MN State Fair. Dam is a "Rare Timber" daughter that was in our show flock as a lamb and yearling.

1657-January Ram Lamb

Sanford M100

B: 1/13/2011 Single RR

S: Steffens 954 584436

D: Sanford M706 97227C

At 60 days, this ram really looks the part of being a stud ram. Dam is a Finder 3229 daughter.

1658-February Ram Lamb

Sanford M124

B: 2/6/2011 Twin RR

S: Steffens 954 584436

D: Sanford M404 77072C

Sanford M404 is a Finder 3229 daughter, out of Rikow 2041 that I bought for Marci at this sale. You will find her in a large percent of our ewe flock. Very complete Steffens son, with bone, wool and body with style.

1659-January Ewe Lamb

Information Sale Day

1660-February Ewe Lamb

Information Sale Day

Consigned By

RUBY'S RANCH

Melinda Ruby-Gruner

18010 N 93rd E Ave.

Collinsville, OK 74021

H: 918/371-2779 ~ C: 918/406-3819

1661-January Ewe Lamb

Information Sale Day

1662-February Ewe Lamb

Information Sale Day

Both ewe lamb will be at least QR and NN. They will be sired by our Dohrmann Bros ram, Preuit ram or my own ram "Kebler".

Consigned By

GORDENEER HAMPSHIRE

Jeff Gordeneer

607 N Ionia Rd-Vermontville, MI 49096

H: 517/726-1309 ~ C: 517/449-6358

www.gordeneerhampshires.com

1663-February Ram Lamb

Gordeneer 1121

B: 2/4/2011 Twin RR NNP

S: Gordeneer 1001 590396

D: Gordeneer 710 96250C

Damed by one of our top "Powerbit" daughters. This lamb is long and extended, very straight in his lines, up headed with plenty of bone and wool. Should make a great stud prospect.

1664-February Ram Lamb

Gordeneer 1128

B: 2/10/2022 Single RR NNP

S: Gordeneer 1001 590396

D: Gordeneer 831 13240D

Another stud prospect out of a great ewe family. His dam is a granddaughter of our great stud ewe "Ester". This lamb is big footed and big boned and very complete.



MIDWEST STUD RAM SALE

**1665-March Ram Lamb
Information Sale Day**

Our "Powersurge" lambs came late, but have some real possibilities. We will bring two March ram lambs with the ewe families behind them to make them real stud prospects.

**1666-March Ram Lamb
Information Sale Day**

Check our website for updated photos and information on our consignments.

**1667-Fall Ewe Lamb
Gordeneer 1051**

B: 9/23/2010 Single RR NNP
S: "Powersurge"
Gordeneer 816 586553
D: Gordeneer 607 90483C

This is a very complete female. She has tremendous volume and width, along with extension and eye appeal, and I think she is big enough.

**1668-January Ewe Lamb
Gordeneer 1105**

B: 1/10/2011 Twin QR NNP
S: "Powerbilt"
Wheaton 5-058 579825
D: Gordeneer 325 70766C

This pedigree has been in Sedalia before, in 2008. Her full sister was Junior Champion. In '09, another full sister was Junior Champion and Reserve Grand Champion Ewe. This is a great show and stud ewe prospect, and the only "Powerbilt" lamb we will sell this year.

**1669-January Ewe Lamb
Gordeneer 1109**

B: 1/14/2011 Twin QR NNP
S: Gordeneer 1001 590396
D: Gordeneer 714 96253C

Really a complete, pretty female, and extremely well bred. Her dam raised the Grand Champion Ram at the '09 Hampshire Showcase. She is a granddaughter of our great stud ewe "Esther" who raised "Custombuilt" and "Ugly Betty".

**1670-February Ewe Lamb
Gordeneer 1113**

B: 2/3/2011 Single RR NNP
S: Gordeneer 1001 590396
D: Gordeneer 805 13225D

Big, tall, straight, up-headed, plenty of wool and bone. I think she can be a great one. Sired by our "Troubadour" son and out of a "Powerbilt" daughter that goes back to the Deakin ram and the mother of "Alliance".

**1671-February Ewe Lamb
Gordeneer 1122**

B: 2/4/2011 Twin RR NNP
S: Gordeneer 1001 590396
D: Gordeneer 710 96250C

A very nice female, and extremely well bred. We have a great set of "Troubadour" yearlings we grew out, so in order to keep our numbers under control, we will offer a terrific set of Spring ewe lambs at our National Sale.

HAMPSHIRE

1672-March Ewe Lamb

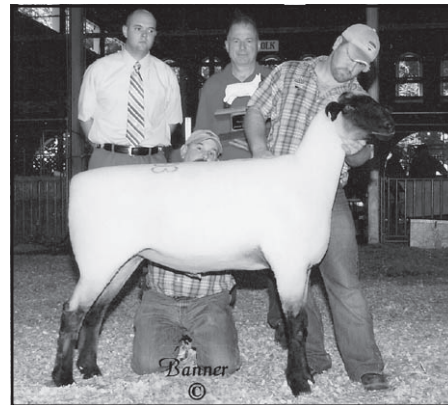
Gordeneer 1137
B: 3/3/2011 Single QR NNP
S: "Powersurge"
Gordeneer 816 586553
D: Gordeneer 833 13241D

This is one of those females that should just stay home. Really has a great look at three weeks, and her pedigree is awesome. Double bred "Powerbilt" and her dam is out of Gordeneer 2021, the ewe that raised "Esther", the dam of "Custom Built" and "Ugly Betty".

**1673-March Ewe Lamb
Gordeneer 1145**

B: 3/6/2011 Twin QR
S: "Powersurge"
Gordeneer 816 586553
D: Rikow 6063 90697C

Dammed by the big "Taylor Made" daughter that we purchased from Richard at the National Sale in '06. She has a lot of look right now, and some big sheep behind her.



Grand Champion Hampshire Yearling Ewe at \$2,400 from Minnesota that was taken by an Illinois buyer in the 2010 Midwest Stud Ram Sale.

**1675-February Ewe Lamb
Lytle 801**

B: 2/1/2011 Triplet NNP
S: "Rare Bid"
Bobendrier 10-43 NNP RR 590628
D: Lytle 295 NNP QR

This ewe lamb has eye appeal and should make a nice show lamb. DNA will be available later. Email us for pictures.

Consigned By
LYTLE'S HAMPSHIRE

David & Barbara Lytle
190 Church Rd.

Lincoln University, PA 19352
H: 610/255-5354 ~ C: 484/678-9291
Email: dave.lytle@churchdwright.com

1674-February Ram Lamb

Lytle 818
B: Twin RR NNP
S: "Rare Bid"
Bobendrier 10-43 NNP RR 590628
D: Schlichter BB 38 RR 98949C

This lamb has a bright future ahead of him! He is sired by the high selling Bobendrier ram lamb we purchased at the '10 Midwest Sale. "Rare Bid" sires big footed lambs with great breed character and this lamb is no exception. His dam was also a Sedalia acquisition, the Schlichter ewe was the second place January lamb at the '08 sale. Our son Justin did well showing the Schlichter ewe earning championship honors at the PA Farm Show as a lamb and Res. Champion at the KILE Jr Show as a yearling.

Consigned By
GATSON HAMPSHIRE

Cheyenne, Kasey & Abilene Gatson
31310 Bluejay Rd-Vandalia, MO 63382
H: 573/594-3247 ~ C: 573/721-6482
Email: gatsonfarms@earthlink.net

1676-Yearling Ram

Gatson 10-962
B: 1/8/2010 Single QR
S: Caskey 8322 RR S 588072
D: Gatson 06-819 Tw 11373D

Big framed, extreme patterned ram with lots of wool and bone. Champion Ram at MO State Fair Open Show, 1st at Midwest Junior Preview Show and Third January at the All American.

Consigned By
**HAYS BROTHERS
CLUB LAMBS**

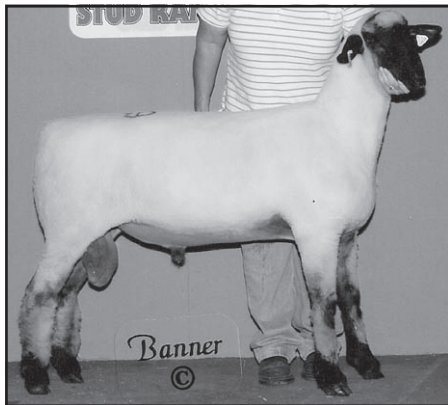
Matthew Hays ~ 785/438-0339
3427 Linn Rd-Perry, KS 66073
Email: hays.m@hotmail.com
Web: www.hbclublambs.com

**1677-SS Spring Ram
Information Sale Day**



MIDWEST STUD RAM SALE

HAMPSHIRE



1st Hampshire Fall Ram Lamb from Colorado that sold to Wisconsin at \$1,200 in the 2010 Midwest Stud Ram Sale.

Consigned By
FRAME HAMPSHIRE

Art Frame ~ 507/376-4928
16465 Paul Ave.
Worthington, MN 56187

Email: afame@nobleswildblue.com

1678-SS Spring Ram
Information Sale Day

1679-SS Spring Ram
Information Sale Day

We will bring February born "Red Baron" sons.

Consigned By
ROBERT G KOEHLER FAMILY

Robert G Koehler Family
1712 111th St-Slayton, MN 56172
H: 507/836-8319 ~ C: 507/760-0949
Email: koehl009@umn.edu

1680-SS Spring Ram
Information Sale Day

1681-SS Spring Ram
Information Sale Day

Our ram lambs will be a son or grandson of Koehler 0867 RR "Red Baron".



Consigned By
HUNTER SHEEP FARM

Larry & Jason Hunter
PO Box 93-Roseville, IL 61473
H: 309/337-0380 ~ C: 309/337-0389
Email: huntersheepfarm@hotmail.com

1682-February Ewe Lamb
Information Sale Day
S: Sanford M930 588574

The sire was 5th yearling at the '10 MN State Fair.

1683-February Ewe Lamb
Information Sale Day
S: Sanford M930 588574

We have decided to sell the Hamp flock. We have 11 brood ewes and one stud ram, plus the entire 2011 lamb crop.

Consigned By
THE HICKMAN'S

Jim Hickman
2126 23rd St SE-Buffalo, MN 55313
H: 612/860-9701 ~ C: 763/370-4811
Email: hickmanshamps@gmail.com
Web: www.hickmanshamps.com

1684-January Ram Lamb
Hickman 765

B: 1/1/2011 Triplet RR NN
S: "The Devil Hickman"
607 RR Tr 587275
D: Hickman 567 RR AI TW 96238C

This is one of the "The Devil's" best ram lambs this year. With his Deakin 01-776 and "Boomerang" breeding, his potential is outstanding. He is big, with wide flat bone and lots of wool. His picture is on the website. His dam had the Supreme Champion Ram at the '10 Corn Belt Sale.

1685-February Ram Lamb
"Dragon" Hickman 795

B: 2/4/2011 Twin RR NN
S: "Ahead"
Hickman 680 AI RR ET 588542
D: Hickman 453 RR AA AI TW 73238

Our first sale offering of "Ahead" is his best buck lamb from this year. To add to this, he is out of a super old donor ewe 453. Almost a third of our flock and sale lambs come from her or are related. This maternal line is extremely productive and great dams. You may have seen his baby picture...watch for a new picture after his weaning on the web site. This is a chance to get a stud buck with the 99-32 bloodlines that has done so well for us.

**Substitute Entries
Will Be Identified
With a Line
Under the Lot Number**

1686-January Ewe Lamb
Hickman 789

B: 1/15/2011 Twin RR NN
S: "The Devil"
Hickman 607 RR TR 587275
D: Hickman 608 RR TW 14949D

A super correct very pretty ewe lamb. Double bred Deakin 01-776 with 441 on the maternal side also. See her picture on the website.

1687-February Ewe Lamb
Hickman 801

B: 2/6/2011 Twin RR NN
S: "Ahead"
Hickman 680 AI RR ET 588542
D: Hickman 585 RR TW 13096D

Another super "Ahead" lamb. Her dam was the 6th January Ewe Lamb at Louisville in '08 and out of the great old Donor ewe 453. This lamb is a super show lamb and she should get big. See all of our entries in early June on the website.

Consigned By
NELSON RANCH

Rodney & Kathy Nelson
13329 WCR 74-Eaton, CO 80615
H: 970/454-3775 ~ C: 970/481-9837
Email: nelsheep1@what-wire.com

1688-Yearling Ram
Nelson 10064

B: 2/21/2010 Twin RR
S: Nelson 8014 RR 587089
D: Glewen 64-02 62947C

Nice fronted with lots of extension.

1689-Fall Ram Lamb
Nelson 10105

B: 9/26/2010 Twin RR
S: Nelson 8014 RR 587089
D: Nelson 7024 98249C

Extreme long neck...very eye catching.

1690-Fall Ram Lamb
Nelson 10108

B: 10/1/2010 Twin RR
S: Nelson 8013 RR 587088
D: Mission Bell 7010 96747C

Very long bodied and nicely balanced.

1691-Yearling Ewe
Nelson 10038

B: 2/6/2010 Twin RR
S: Nelson 8013 RR 587088
D: Mission Bell 7097 13198D

1692-Yearling Ewe
Nelson 10012

B: 1/10/2010 Twin RR
S: Nelson 8014 587089
D: Nelson 6118 94858C

MIDWEST STUD RAM SALE

1693-Yearling Ewe**Nelson 10043**

B: 2/7/2010 Twin RR
 S: Nelson 8013 RR 587088
 D: Mission Bell 8077 14707D

1694-Fall Ewe Lamb**Nelson 10082**

B: 9/14/2010 Single RR
 S: Nelson 8014 587089
 D: Hale 161 63285C

*Consigned By***EDGEWOOD RANCH**

Travis Bell
 12787 CR 19A-Fordville, ND 58231
 H: 701/229-3318 ~ C: 701/360-1597
 Email: corri@polarcomm.com

1695-January Ram Lamb

B: 1/3/2011 Twin
 S: Houghtaling 8431 RR 587689
 D: Herrig 0455 NNP RR 94256

Tremendous twin buck with explosive growth, thickness and length. Don't miss out on checking him out.

1696-January Ewe Lamb

Information Sale Day

Lamb will be sired by Houghtaling 8431.

*Consigned By***HERRIG FAMILY HAMPSHIRE**

Jake & Dave Herrig
 677 St Hwy 267-Slayton, MN 56172
 H: 507/227-4228 ~ C: 507/220-1360
 Email: jake_herrig@lycos.com
 Web: www.herrighamps.homestead.com

1697-Yearling Ewe**Herrig 0741**

B: 2/6/2010 Twin RR NN
 S: Frame 6066 583557
 D: Herrig 0579 15811D

Big time show ewe. Frame 6066 sired the '09 National Champion Ewe at NAILE.

1698-Yearling Ewe**Herrig 0737**

B: 2/10/2011 Twin QR NN
 S: Frame 5046 582342
 D: Herrig 0306 77216L

Stud ewe and best ewe we have sold. We are letting her go because we have 2 full sisters in the ewe flock.

**MAIL BIDS &
 CREDIT CARD PURCHASES
 WILL BE CHARGED A 5%
 CONVENIENCE FEE.**

HAMPSHIRE

1699-February Ram Lamb**Herrig 0803**

B: 2/13/2011 RR NN
 S: Frame 0342 591468
 D: Roof 823 84790C

He looks like a stud buck. His mother is one of the best ewe we have. We have a stud we are using out of her.

1700-February Ewe Lamb

Information Sale Day

1701-March Ewe Lamb

Information Sale Day

Check our website for more information.

*Consigned By***BORCHER SHEEP CO**

Weston Borchers
 1017 Rd 14-Powell, WY 82435
 H: 307/754-3691 ~ C: 307/272-5285
 Email: borchers_23@hotmail.com

1702-Yearling Ram**Borchers BRN 10012**

B: 2/2/2010 Single
 S: Riviera 624 (589) 588022
 D: Borchers BL 65 15693D

1703-February Ram Lamb**Borchers F11035-18**

B: 2/17/2011 Single
 S: Peterson 9611
 D: Borchers Pr 52 24063D

1704-February Ewe Lamb**Borchers F 11062-19**

B: 2/22/2011 Twin
 S: Peterson 9611
 D: Borchers BL 63 15695D

*Consigned By***BOBENDRIER HAMPSHIRE**

Chuck Bobendrier
 1607 90th Ave-Pipestone, MN 56164
 H: 507/825-2100 ~ C: 507/825-4072
 Email: bobendrier@svtv.com
 Web: www.bobendrierhampshires.com

1705-Yearling Ewe**Bobendrier 10-97**

B: 2/6/2010 Twin RR NNP
 S: Bobendrier 0982 590139
 D: Bobendrier 0632 90915C

A top show female! She placed 2nd in the Feb class in the open show at Louisville, last Fall. Paternal half sister to our National Champion Ewe.



This Minnesota Hampshire Yearling Ewe stood 3rd and sold at \$2,000 to Illinois in the 2010 Midwest Stud Ram Sale.

1706-Yearling Ewe**Bobendrier 10-122**

B: 3/12/2010 Twin QR NNP
 S: "Rare Expectation"
 Bobendrier 589610
 D: Bobendrier 0964 19700D

Also an outstanding female. She placed 3rd in March Ewe Lamb Class at Louisville. Her twin brother was 1st March Ram Lamb. Their dam was only 13 months of age at lambing time!

1707-Yearling Ewe**Bobendrier 10-93**

B: 2/4/2010 Twin QR NNP
 S: "Rare Definition"
 Bobendrier 586819
 D: Bobendrier 0224 66478C

A big framed ewe out of a grand old female.

1708-Fall Ewe Lamb**Bobendrier 10-182**

B: 9/12/2010 Twin QR NNP
 S: "Rare Rendition" 587240
 D: Bobendrier 7-183 13299D

Sire was the Louisville Champion in '09. Dam was 1st Fall and Reserve Senior Champion at Louisville in '08.

1709-Fall Ewe Lamb**Bobendrier 10-194**

B: 9/29/2010 Twin RR NNP
 S: "Rare Definition" 586819
 D: Bobendrier 0702 97352C

If you like pretty ones...be sure to check this one out!



MIDWEST STUD RAM SALE

HAMPSHIRE



2nd Hampshire February Ewe Lamb from Minnesota that went to Massachusetts at \$2,100 in the 2010 Midwest Stud Ram Sale.

1710-January Ram Lamb

Bobendrier 11-01

B: 1/2/2011 Triplet RR NNP
S: Bobendrier 10-76 591061
D: Bobendrier 0568 88756C

Sire was our pick of the "High Definition" grandsons. He was never shown. He was busy in the breeding pasture! He sired an excellent set of lambs.

1711-January Ram Lamb

Bobendrier 11-12

B: 1/16/2011 Twin RR NNP
S: Bobendrier 0982 590139
D: Bobendrier 8108 17684D

Bobendrier 0982 sired our Champion Ewe at Louisville, last Fall.

1712-January Ewe Lamb

Bobendrier 11-36

B: 1/24/2011 Twin RR NNP
S: Bobendrier 10-76 591061
D: Bobendrier 0890 13825D

Dam was 1st March Ewe Lamb at the '08 MN State Fair.

1713-January Ewe Lamb

Bobendrier 11-45

B: 1/27/2011 Triplet RR NNP
S: Bobendrier 0982 590139
D: Bobendrier 0787 97387C

A top quality show lamb. Check our website for individual photos, prior to the Sale.



Consigned By PINE LAWN FARM

Mike Caskey Family
1222 171st St-Holland, MN 56139
H: 507/347-3229 ~ C: 507/215-0266
Email: mccaskey@woodstocktel.net
Web: www.caskeypinelawnfarms.com

1714-Yearling Ewe

Caskey 0690

B: 3/2/2010 Twin QR
S: Caskey 9277 RR 589881
D: Caskey 4224 QR 81554C

Here is a very stylish, well balanced ewe with a wide, level hip. She placed 5th in the March Ewe Lamb Class at last years National Hampshire Show.

1715-Fall Ewe Lamb

Caskey 051

B: 10/4/2010 Twin RR
S: "Fusion" Rikow 8095 RR 588399
D: Caskey 7453 RR 16388D

Caskey 7453 was our lead Fall show ewe in '08.

1716-Fall Ewe Lamb

Caskey 0523

B: 10/10/2010 Twin RR
S: Kirlin 7-07 RR 584156
D: Caskey 6106 RR 94939C

Maternal half sister to "Big Rig", our 2nd Place Fall Ram Lamb at last years National Hampshire Show.

1717-January Ewe Lamb

Information Sale Day

1718-February Ewe Lamb

Information Sale Day

1719-February Ewe Lamb

Information Sale Day

1720-March Ewe Lamb

Information Sale Day

Consigned By NOC SHEEP CENTER

Bart Cardwell/Herdsman
PO Box 310-Tonkawa, OK 74653
H: 580/628-6497 ~C: 580/716-2550
Email: bart.cardwell@north-ok.edu
www.north-ok.edu/agriculture-science1

1721-Yearling Ram

Finder DW-6527-2368

B: 1/17/2010 Twin RR NN
S: NOC DW-572-224 589918
D: C Finder 6527 90852

Champion Ram at the '10 Tulsa State Fair. A lined up "Breakaway" ram.

1722-Yearling Ram

Finder DW-6532-351

B: 3/2/2010 Single RR NN
S: NOC DW-6572-224 589918
D: C Finder 6532 90855

Very structurally correct. 3/4 brother to above ram.

Consigned By UNDERWOOD FARMS

Tom Underwood ~ 712/330-0113
910 6th-Spirit Lake, IA 51360

1723-Yearling Ewe

Koehler 1043

B: 2/24/2010 Twin RR
S: "Red Baron"
Koehler 0867 RR TW 587898
D: C Koehler 0540 TW 86893

1724-Yearling Ewe

Koehler 1035

B: 2/19/2010 Triplet RR
S: "Red Baron"
Koehler 0867 RR TW 587898
D: C Hoehler 0626 TW 95621

Purchased these two ewes at Minnesota State. Both are RR. You be the judge, the last one placed them last.

Consigned By UNIVERSITY OF KENTUCKY

Endre Fink
1171 Midway Rd-Versailles, KY 40383
H: 859/873-6587 ~ C: 859/559-7765
Email: endre.fink@uky.edu

1725-SS Spring Ram

Information Sale Day

1726-SS Spring Ewe

Information Sale Day

1727-Slick-Sheared Spring Ewe
Information Sale Day

Consigned By PLAZA HAMPS

Brad Payne ~ 630/688-2583
21480 Bee Creek Blvd.
Weston, MO 64098
Email: brad_payne65@yahoo.com

1728-January Ram Lamb

Information Sale Day

1729-March Ram Lamb

Information Sale Day

1730-March Ewe Lamb

Information Sale Day

MIDWEST STUD RAM SALE

Consigned By
TROXTELL SHEEP

Johnny & Terrye Troxtell
455 Biggerstaff Rd-Sherman, TX 75090
H: 903/892-6821 ~ C: 903/815-6881
Email: troxjone@aol.com

1731-Yearling Ram
TroxteLL 10-20

B: 3/8/2010 Twin RR NN
S: Troxtell 915 588992
D: Troxtell 755 97043C

1732-March Ram Lamb
Information Sale Day RR NN

1733-March Ram Lamb
Information Sale Day RR NN

1734-March Ewe Lamb
Information Sale Day RR NN

Consigned By
UPTOWN FARMS

Matt & Kate Lambert
1105 N Main St-Brookfield, MO 64678
H: 660/541-1480 ~ C: 660/541-0468
uptownsuffolkshamps@hotmail.com
Web: www.uptownsheep.com

1735-January Ram Lamb
Lambert 11-04

B: 1/13/2011 Twin QR NN
S: Feller 919
D: Lambert 08-206

If you are looking for big hipped, good topped, and wooly ram that is functional...here he is. He has a lot of good pieces that a lot of people are looking for. He is sired by the Billy Wade ram, Feller 919, we bought privately last Spring. We bought him to improve hips and tops and it has worked. The 919 ram is sired by the "Enduro" and dammed by a daughter of "NBT". 11-04 is dammed by granddaughter of "Taylor Made" and she goes back to Heggemeier breeding on the dam side.

1736-February Ram Lamb
Information Sale Day

1737-January Ewe Lamb
Information Sale Day

1738-February Ewe Lamb
Information Sale Day

1739-March Ewe Lamb
Information Sale Day

Our consignment is mostly undecided at the time of entry. We will bring our top set of lambs, as we are expecting our first baby in May and will not be showing this summer. Our lambs will be sired by "The Engagement" and Feller 919. We hope to get pictures and more information of our consignment on our website closer to sale time.

HAMPSHIRE

Consigned By
SILVER CREEK FARMS

Billy Wade ~ 503/931-6827
1300 95th Ave-Salem, OR 97317
Email:wadewesthamps@yahoo.com
Web:www.silvercreekhampshires.com

1740-Fall Ram Lamb
Feller F060

B: 9/26/2010 Single RR NNP
S: "Enduro" Wheaton 7-061 586012
D: Feller 865 20281D
Full brother to the '10 Champion Slick Sheared Ram at the NAILE. 215 lbs at 168 days.

1741-January Ram Lamb
Feller 105

B: 1/2/2011 Single QR NNP
S: "Cooler" Wheaton 7-056 587221
D: Feller F643 95573
"Cooler" is a "Classic" son used by Heath Geiman and Land Run Hamps. We purchased this stud, last year.

1742-January Ram Lamb
Feller 111

B: 1/15/2011 Twin RR NN
S: "Cooler" Wheaton 7-056 587221
D: Feller 916 22070D
Double bred "Classic" on the top side. 916 was the 1st Place Slick-Sheared Ewe Lamb at the '09 NAILE. She is a "NBT" daughter.

1743-February Ram Lamb
Feller 116

B: 2/4/2011 Twin
S: "Enduro" Wheaton 7-061 586012
D: Mission Bell 7013 96750C
"Enduro" is sired by "Classic" and MB7013 is sired by "Hummer".

1744-SS Yearling Ewe
Feller 040

B: 2/14/2010 Twin
S: "Maverick" Miller Y-1 586211D
D: Feller S11 14962D

1745-SS Spring Ram
Feller 135

B: 1/25/2011 Single QR NN
S: "Cooler" Wheaton 7-056 587221
D: Feller 618 91281C

1746-Fall Ewe Lamb
Feller F061

B: 10/26/2010 Twin
S: "Enduro" Wheaton 7-061 586012
D: Cummings 613 90198C



An Oregon entry was 2nd Hampshire March Ram Lamb and brought \$1600 going to Texas in the 2010 Midwest Stud Ram Sale.

1747-February Ewe Lamb
Feller 117

B: 2/4/2011 Twin QR NN
S: "Cooler" Wheaton 7-056 587221
D: Mission Bell 7013 96750C

1748-February Ewe Lamb
Feller 121

B: 2/4/2011 Twin RR NN
S: "Cooler" Wheaton 7-056 587221
D: Feller 939 19818D

1749-February Ewe Lamb
Feller 122

B: 2/4/2011 Twin
S: "Cooler" Wheaton 7-056 587221
D: Feller 939 19818D

1750-SS Spring Ewe
Feller 127

B: 2/6/2011
S: "Cooler" Wheaton 7-056 587221
D: Feller 738 97124C

1751-February Ram Lamb
Forster/Wade 136

B: 2/6/2011
S: "Cooler" Wheaton 7-056 587221
D: Forster 9-8 26363D



MIDWEST STUD RAM SALE

HAMPSHIRE



Reserve Grand Champion Hampshire February Ram Lamb at the 2010 Midwest Stud Ram Sale. This Wisconsin ram went to Ohio at \$1,250.

Consigned By

SPRINGDALE FARM

Dale & Dan Anderson ~ 815/378-2928
3021 Shattuck Rd-Belvidere, IL 61008
Email: sewrrat1963@aol.com

1752-January Ram Lamb Information Sale Day

Will be RR. Will be sired by "Rare Perfection", our Bobendrier stud or P.H., our home bred ram. Both were in our show flock in '10.

1753-January Ram Lamb Information Sale Day

Will be RR. We are very excited by this group of lambs and feel they will be a welcome addition to any flock.

1754-February Ram Lamb Information Sale Day ~ RR

1755-February Ram Lamb Information Sale Day ~ RR

1756-February Ewe Lamb Information Sale Day ~ RR or QR



Consigned By

LAND RUN HAMPS

Aaron Hubbard ~ 918/225-9743
342490 E 760 Rd-Agra, OK 74824

1757-March Ewe Lamb

Land Run 234

B: 3/16/2011 Single
S: Land Run 1019
D: "Bella" MRVH 0096 (216)

Interesting combination of genetics. Land Run 1019 added a ton more top and really widened our pin set on our lambs this year. 1019 is sired by "Troubadour" Marcantel 5-07 that has sired many winners across the nation in the wether industry. You can check him out at www.morrispersonclublambs.com. "Bella" MRVH 0096 (216) was the Champion Ewe at the Midwest Sale and Tulsa State Fair in '07. Land Run 234 is also a maternal half sister to the Jr Champion Ewe at last year's Midwest Sale.

Consigned By

KJELDGAARD FARMS

Al Kjeldgaard ~ 402/870-0397
4400 Co Rd IJ-Tekamah, NE 68061
Email: almary@microlnk.com
www.kjeldgaardfarms.homestead.com

1758-Fall Ram Lamb

Kjeldgaard 11-700

B: 10/2/2010 Triplet RR
S: "Exciter"
Kjeldgaard 08-740 RR 589956
D: Mission Bell 8007 19408

Dam is one of the good yearlings that I bought in Sedalia two years ago. This is a big lamb with great type, bone and volume. Many should like him.

1759-Fall Ram Lamb

Kjeldgaard 11-704

B: 10/4/2010 Twin RR
S: "High Resolution"
Kjeldgaard 07-730 RR 586132
D: Kjeldgaard 09-744 RR 22444
22444

"High Resolution" is a full brother to "High Definition" that we sold Bobendriers. This ram has good type. He's a little more "freaky" than the other fall ram.

1760-Fall Ewe Lamb

Kjeldgaard 11-699

B: 10/1/2010 Twin QR
S: "Exciter"
Kjeldgaard 08-740 RR 589956
D: Mission Bell 9114 21509

Mission Bell was my pick of Rob's ewe lambs in his dispersal. This lamb is flatout good.

Consigned By

MCTAGGART'S HAMPSHIRE

Robert S McTaggart & Family
10509 E 500 S-Otterbein, IN 47970
H: 765/583-0232 ~ C: 765/490-9832

1761-Yearling Ewe

McTaggart's 1002

B: 2/14/2010 Twin RR
S: Heggemeier 07-53 RR SG
585341
D: McTaggart's 837 15628D

Bue sure to take a look! Super ewe family! This is a very stylish young ewe. She is long, level, and tall. She has plenty of bone.

1762-March Ram Lamb

McTaggart's 1106

B: 3/2/2011 Single RR
S: Krackow Rikow 9049 589750
D: McTaggart's 912

Consigned By

RIKOW HAMPS

Richard Krackow
PO Box 233-Arcadia, WI 54612
H: 608/232-7110 ~ C: 608/343-2899
Email: rkdrealt@trivest.net

1763-Yearling Ram

Rikow 0061

B: 2/17/2010 RR
S: "Waggs" Rikow's
D: Rikow 7038

A later ram we grew out - long and smooth - "Waggs" was Reserve Senior Champion Ram at Louisville.

1764-Fall Ram Lamb

Rikow 0102

B: 9/3/2010 RR
S: "Flash Back"
D: Nelson 5041 by "Boomerang"

This an eye catcher. Long wool from nose to toes. We have kept an older brother to this ram.

1765-Fall Ram Lamb

Rikow 0104

B: 9/3/2010 RR
S: "Flash Back"
D: Mission Bell 4041

Dan's favorite when we cut him out. Thick, good bone and stylish.

1766-Fall Ewe Lamb

Rikow 0105

B: 9/3/2010 RR
S: "Flash Back"
D: Mission Bell 4041

Twin to above ram. Should keep her, but don't have many early lambs and we need to pay the feed bill.

MIDWEST STUD RAM SALE

1767-Yearling Ewe

Rikow 0059

B: 2/16/2010 RR
S: "Flash Back"
D: Duncan 3035

"Flash Back" really stamps his lambs. Duncan 3035 was an awesome producer for Rob and she continues in my flock.

1768-Yearling Ewe

Rikow 0045

B: 2/5/2010 RR
S: "Flash Back"
D: Rikow 4045

Rikow 4045 is the full sister to our Reserve Champion Ewe at Louisville and is a consistent producer for us.

1769-February Ram Lamb

Rkow 1041

B: 2/5/2011 RR
S: Knapp 227
D: Rikow 9028

Knapp 227 is the sire of "Grand Theft" We got one crop of lambs, but good ones.

1770-February Ewe Lamb

Rikow 1033

B: 2/2/2011 RR
S: "Flash Back"
D: Rikow 7085

Spilde's think I should keep this one, but I'm the Boss!!

Consigned By

PETERSON SHEEP CO

Doug & Lindi Peterson ~ 701/376-3115
803 53rd St NE-Lemmon, SD 57638
Email: peterson@sdplains.com

1771-Yearling Ram

Peterson 5161

B: 1/26/2010 Triplet RR
S: "Boy's Pick" Hickman
D: Peterson 7532

An extremely thick bodied ram with lots of wool. Looked at by breeders as a lamb with appreciation of his natural thickness.

1772-Yearling Ram

Peterson 5013

B: 1/31/2010 Twin RR
S: Peterson 3675 RR
D: 4075 RR

By far, one of the fanciest ram lambs last year-grew into a very thick bodied, super top and hipped ram out of one of our deepest bodied ewes.

1773-Yearling Ewe

Peterson 5737

B: 1/26/2010 Twin RR
S: Peterson 3675 RR
D: Peterson 7598

A big, bold, deep bodied foundation female, sired by a High Selling Ram Lamb at the '08 Midwest Sale's son.

HAMPSHIRE

1774-Yearling Ewe

Peterson 5018

B: 2/1/2010 Twin RR
S: "Boy's Pick" Hickman
D: Peterson 7731 RR

A complete female that is all Hamp. Should make an excellent brood ewe.

1775-January Ram Lamb

Peterson 5557

B: 1/21/2011 Twin RR
S: Peterson 3723 RR
D: Peterson 3705 RR

One of those lambs that gets your attention at a young age. An extremely long, fast growing ram that is all Hamp. Has been out picked since birth.

1776-February Ram Lamb

Peterson 5628

B: 2/11/2011 Twin
S: "Boy's Pick" Hickman
D: Peterson 7575

Super deep bodied, heavy boned ram.

1777-March Ram Lamb

Information Sale Day

Too young to pick at this time.

1778-January Ewe Lamb

Peterson 5540

B: 1/19/2011 Twin RR
S: Peterson 3723 RR
D: Peterson 6123 RR

A pure future foundation female with extra deep body and heavy bone. The only female to sell this year, out of 3723, his first crop at 90 days appear to add that extra depth of body and bone we like.

1779-February Ewe Lamb

Peterson 5608

B: 2/7/2011 Twin RR
S: "Boy's Pick" Hickman
D: Peterson 7670

A show type lamb with lots of eye appeal. Out of "Boy's Pick" who always sires extra style, wool and bone.

1780-March Ewe Lamb

Information Sale Day

Too young to pick at this time.

Consigned By

OAK MEADOW SHEEP

Bruce Nickel

30799 CSAH 34-Litchfield, MN 55355
H: 320/693-2428 ~ C: 320/694-7367

1781-Yearling Ram

Oak Meadow 661

B: 3/7/2010 Single
S: Oak Meadow 584 589612
D: Oak Meadow 594 19879D



Junior Champion Hampshire February Ewe Lamb at \$1,750 from Oklahoma going to Kansas in the 2010 Midwest Stud Ram Sale.

Consigned By
**NEWLAND
HAMPSHIRE**

Merle & Megan Newland
2793 Clark Rd-Richmond, KS 66080
H: 785/418-3168 ~ C: 785/418-6620
Email: newland_hamps@yahoo.com

1782-Yearling Ewe

Newland 0254

B: 3/10/2010 Twin QR
S: Jadewood 0814 586615
D: Newland 0239 Tw 15587D

Dam was sired by Neimier "Ram Rod" and out of a top Schlichter ewe. We bought the sire of these 3 ewes at \$3,000 in the Ohio Showcase Sale.

1783-Yearling Ewe

Newland 0255

B: 3/26/2010 Twin
S: Jadewood 0814 586615
D: Glewen 376-06 Tw 90202C

The dam was a \$1500 ewe we purchased in the Ohio Showcase Sale.

1784-Yearling Ewe

Newland 0256

B: 3/26/2010
S: Jadewood 0814 586615
D: MRVH 332 91418C

Her dam was a \$2800 Mike Nelsh ewe we bought in the Ohio Showcase Sale.



MIDWEST STUD RAM SALE

Advertise With Impact!

A Large Number of the Ads You See in this Catalog Were Created by Royal~S Graphics.

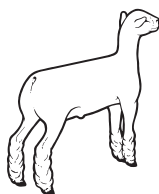


- ◆ Advertising Design
- ◆ Logo Design
- ◆ Brochures
- ◆ Flyers
- ◆ Sale Catalogs
- ◆ Business Cards
- ◆ Letterheads
- ◆ Newsletters
- ◆ Pedigree/Stall Cards
- ◆ Custom Graphics

Over 40 Years Experience in the Purebred Livestock Industry!



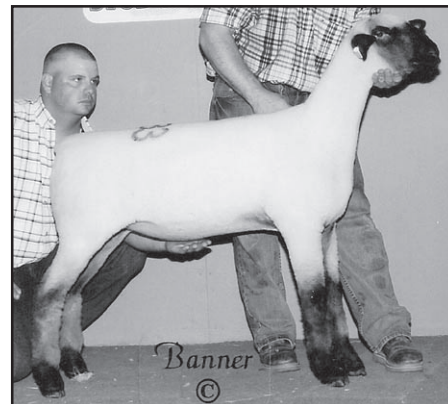
OHIO SHEEP IMPROVEMENT ASSOCIATION



Specializing in the Livestock Industry!

419.352.2332
 royal-s@earthlink.net
 17917 Brim Road
 Bowling Green, Ohio 43402

HAMPSHIRE



Reserve Hampshire Junior Champion March Ewe Lamb from Missouri at \$1,200 in the 2010 Midwest Stud Ram Sale. Taken by a Texas buyer.

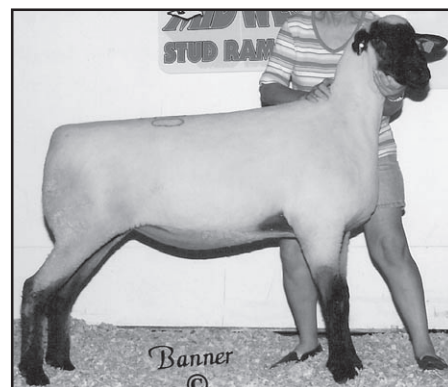
Consigned By
CABANISS CLUB LAMBS

Riley & Morgan Cabaniss
 Rt 1 Box 19, Arapaho, OK 73620
 Morgan: 580/323-2802
 Riley: 580/445-6240

Email: cabanissok@itinet.net
 Web: www.cabanissok.tripod.com

1785-Yearling Ram
 Information Sale Day

1786-Fall Ram Lamb
 Information Sale Day



2nd Hampshire Yearling Ewe from South Dakota in the 2010 Midwest Stud Ram Sale; sold to Illinois at \$1,000.