

*Consigned By*  
**JIMMY DAVIS**

Jimmy Davis ~ 580/585-3822  
1204 W Colorado-Walters, OK 73572  
Email: jdavisag@yahoo.com  
Web: www.clublambpage.com

**2601-April Ram Lamb**  
Information Sale Day

**2602-April Ram Lamb**  
Information Sale Day

*Consigned By*  
**COLE CLUB LAMBS**

Rex & Koby Cole  
11281 N 1975 Rd-Elk City, OK 73644  
H: 580/243-0749 ~ C: 580/821-2355  
Email: colewoolies@cableone.net  
Web: www.coleclublambs.com

**2603-Yearling Ram**  
Information Sale Day

**2604-Yearling Ewe**  
Information Sale Day

**2605-Yearling Ewe**  
Information Sale Day

**2606-January Ram Lamb**  
Information Sale Day

**2607-February Ram Lamb**  
Information Sale Day

**2608-March Ram Lamb**  
Information Sale Day

**2609-April Ram Lamb**  
Information Sale Day

**2610-January Ewe Lamb**  
Information Sale Day

**2611-January Ewe Lamb**  
Information Sale Day

**2612-January Ewe Lamb**  
Information Sale Day

**2613-February Ewe Lamb**  
Information Sale Day

**2614-February Ewe Lamb**  
Information Sale Day

**2615-March Ewe Lamb**  
Information Sale Day

**2616-March Ewe Lamb**  
Information Sale Day

# HAMPSHIRE

**2617-March Ewe Lamb**  
Information Sale Day

**2618-April Ewe Lamb**  
Information Sale Day

**2619-April Ewe Lamb**  
Information Sale Day

**2620-April Ewe Lamb**  
Information Sale Day

*Consigned By*  
**RUDIN CLUB LAMBS**

Gene & Phillis Rudin ~ 319/642-3292  
348 W Washington St  
Marengo, IA 52301

**2621-January Ram Lamb**  
Information Sale Day

**2622-Fall Ram Lamb**  
Information Sale Day

**2623-January Ewe Lamb**  
Information Sale Day

**2624-February Ewe Lamb**  
Information Sale Day

**2625-March Ewe Lamb**  
Information Sale Day

*Consigned By*  
**EBERT SHEEP FARM**

Jeff, Kerri & Christine Ebert  
10015 Flush Rd-St George, KS 66535  
H: 785/494-2436 ~ C: 785/458-9174  
Email: eberty@wamego.net  
Web: www.ebertsheepfarm.com

**2626-March Ewe Lamb**  
Information Sale Day

*Consigned By*  
**SIMPSON LIVESTOCK**

Jason Simpson  
20727 WCR 84-Ault, CO 80610  
H: 970/834-2610 ~ C: 970/371-0276  
Email: jsimpsoncl@aol.com  
Web: www.simpsonlivestock.com

**2627-Yearling Ram**  
Information Sale Day



2nd January Hampshire Ram Lamb sold at \$18,000 to Nebraska and Indiana in the 2010 Midwest Classic Wether Sire Sale.

**2628-Yearling Ram**  
Information Sale Day

**2629-January Ram Lamb**  
Information Sale Day

**2630-February Ram Lamb**  
Information Sale Day

**2631-February Ram Lamb**  
Information Sale Day

**2632-March Ram Lamb**  
Information Sale Day

**2633-March Ram Lamb**  
Information Sale Day

**2634-April Ram Lamb**  
Information Sale Day

**2635-January Ewe Lamb**  
Information Sale Day

**2636-January Ewe Lamb**  
Information Sale Day

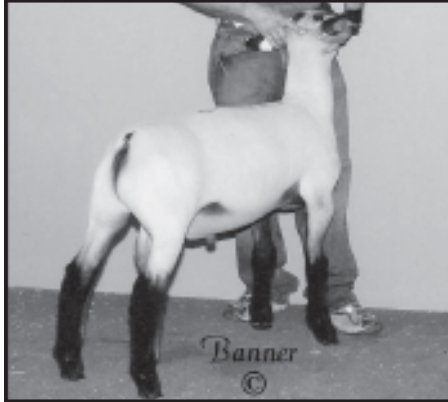
**2637-February Ewe Lamb**  
Information Sale Day



## Sires ~ Dams

# MIDWEST STUD RAM SALE

# HAMPSHIRE



Top Selling Ram at \$28,000, a March Hampshire Ram Lamb, from Texas going to Illinois in the 2010 Midwest Classic Wether Sire Sale.

**2638-February Ewe Lamb**  
Information Sale Day

**2639-March Ewe Lamb**  
Information Sale Day

**2640-March Ewe Lamb**  
Information Sale Day

**2641-March Ewe Lamb**  
Information Sale Day

**2642-April Ewe Lamb**  
Information Sale Day

**2643-April Ewe Lamb**  
Information Sale Day

**MAIL BIDS &  
CREDIT CARD PURCHASES  
WILL BE CHARGED A 5%  
CONVENIENCE FEE.**



*Consigned By*  
**BURCH LIVESTOCK**

Kolby & Micky Burch  
28425 340th St-Coon Rapids, IA 50028  
H: 712/684-5103 ~ C: 307/247-3043  
Email: burchlivestock@gmail.com  
Web: www.burchlivestock.com

**2644-March Ram Lamb**  
Information Sale Day

**2645-March Ram Lamb**  
Information Sale Day

**2646-March Ram Lamb**  
Information Sale Day

**2647-April Ram Lamb**  
Information Sale Day

**2648-April Ram Lamb**  
Information Sale Day

*Consigned By*  
**PARR HAMPSHIRE**

Roger & Marie Parr  
33425 E CR 1000 N  
Mason City, IL 62664  
H: 217/482-3680 ~ C: 309/427-7141  
Email: rparr@frontiernet.net  
Web: www.parrhampshires.com

**2649-Yearling Ram**  
**Parr 1021**

B: 1/18/2010 Twin RR  
S: Wheaton 8-074 587412  
D: Parr 726 95959D  
Wheaton 8-074 was the 2nd Place February Ram at the Midwest Sale and a son of Miller's "Classic".

**2650-Yearling Ram**  
**Parr 1062**

B: 4/2/2010 Twin  
S: Parr 828 586404  
D: Parr 854 12915D  
Parr 828 is out of a Cabaniss "Pistol" son and a Cabaniss ewe.

**2651-Fall Ram Lamb**  
**Parr 1075**

S: Miller 0-771 590167  
D: Cabaniss 06-9637 10255D

**2652-February Ram Lamb**  
**Parr 1121**

S: Miller 0-771 590167  
Miller 0-771 is a "Buckmaster" x "Masterpiece" purchased at the farm in the spring of 2010.

**2653-February Ram Lamb**  
**Parr 1135**

S: Wheaton 8-074 587412

**2654-Yearling Ewe**  
**Parr 1005**

S: Wheaton 8-074 587412

**2655-Yearling Ewe**  
**Parr 1023**

S: Wheaton 8-074 587412

**2656-Yearling Ewe**  
**Parr 1040**

S: Wheaton 8-074 587412

**2657-January Ewe Lamb**  
S: Miller 0-771 590167

**2658-February Ewe Lamb**  
S: Miller 0-771 590167

**2659-February Ewe Lamb**  
S: Miller 0-771 590167

*Consigned By*  
**ROCKIN' C FARMS**

Jody Clem  
671 FM 179-Tahoka, TX 79373  
H: 806/924-7667 ~ C: 806/441-3009  
Email: jclem@lyntegar.com  
Web: www.clublambpage.com

**2660-Yearling Ram**  
Information Sale Day

**2661-Yearling Ewe**  
Information Sale Day

**2662-Yearling Ewe**  
Information Sale Day

**2663-Yearling Ewe**  
Information Sale Day

**2664-Yearling Ewe**  
Information Sale Day

**2665-Yearling Ewe**  
Information Sale Day

**2666-March Ram Lamb**  
Information Sale Day

**2667-April Ram Lamb**  
Information Sale Day

**Sires ~ Dams**

**MIDWEST STUD RAM SALE**

**2668-March Ewe Lamb**  
Information Sale Day

**2669-March Ewe Lamb**  
Information Sale Day

**2670-April Ewe Lamb**  
Information Sale Day

**2671-April Ewe Lamb**  
Information Sale Day

---

*Consigned By*  
**SCHEEL CLUB LAMBS**

Jim & Audra Scheel  
Box 165-Belvidere, SD 57521  
H: 605/344-2597 ~ C: 605/545-1521  
Email: cbwjim@yahoo.com  
Web: www.scheellivestock.com

---

**2672-March Ram Lamb**  
Information Sale Day

**2673-April Ram Lamb**  
Information Sale Day

**2674-February Ewe Lamb**  
Information Sale Day

Hamp entries are sired by our "Anonymous" son purchased from Simpson Livestock at the '10 Midwest Sale. This sire group was one of the best to hit the ground this year.

---

*Consigned By*  
**GREINER CLUB LAMBS**

Ted Greiner ~ 641/660-683925517  
330th Ave-Keota, IA 52248  
Email: tedgreiner@gmail.com

---

**2675-February Ram Lamb**  
Information Sale Day

**2676-February Ewe Lamb**  
Information Sale Day

**2677-March Ewe Lamb**  
Information Sale Day

---

*Consigned By*  
**HEWLETT CLUB LAMBS**

Ed, Connie & Curtis Hewlett  
4893 E Hwy 160  
Independence, KS 67301  
H: 620/331-1475 ~ C: 620/330-4140  
Email: ech@terraworld.net  
Web: www.hewlettfarms.com

---

**2678-March Ram Lamb**  
Information Sale Day

**2679-April Ram Lamb**  
Information Sale Day

# HAMPSHIRE

**2680-February Ewe Lamb**  
Information Sale Day

**2681-March Ewe Lamb**  
Information Sale Day

**2682-March Ewe Lamb**  
Information Sale Day

**2683-April Ewe Lamb**  
Information Sale Day

---

*Consigned By*  
**FAIRLEY FARMS**

Brian Fairley  
45255 313st-Gayville, SD 57031  
H: 605/267-4877 ~ C: 605/660-8025  
Email: fairley1@hotmail.com  
Web: www.fairleyfarms.com

---

**2684-Yearling Ram**  
Information Sale Day

**2685-March Ram Lamb**  
Information Sale Day

**2686-April Ram Lamb**  
Information Sale Day

**2687-March Ewe Lamb**  
Information Sale Day

**2688-April Ewe Lamb**  
Information Sale Day

---

*Consigned By*  
**HARMS SHOW LAMBS**

Larry, Barb & Brian Harms  
27638 E 2450 N Rd  
Lexington, IL 61753  
C: 309/825-3485  
Email: hrmsshwlmbs@prairieinet.net  
Web: www.clublambpage.com

---

**2689-Fall Ram Lamb**  
Information Sale Day

**2690-February Ram Lamb**  
Information Sale Day

**2691-February Ram Lamb**  
Information Sale Day

**2692-March Ram Lamb**  
Information Sale Day



4th February Ram Lamb at the 2010 Midwest Stud Ram Sale sold to Iowa at \$2,600.

**2693-March Ram Lamb**  
Information Sale Day

**2694-April Ram Lamb**  
Information Sale Day

**2695-April Ram Lamb**  
Information Sale Day

**2696-February Ewe Lamb**  
Information Sale Day

**2697-February Ewe Lamb**  
Information Sale Day

**2698-March Ewe Lamb**  
Information Sale Day

**2699-March Ewe Lamb**  
Information Sale Day

**2700-April Ewe Lamb**  
Information Sale Day

**2701-April Ewe Lamb**  
Information Sale Day



**Sires ~ Dams**

**MIDWEST STUD RAM SALE**

# HAMPSHIRE



This Reserve Champion March Hampshire Ram Lamb went to California at \$12,000 in the 2010 Midwest Classic Wether Sire Sale.

*Consigned By*

## **WRIGHT CLUB LAMBS**

BJ Wright

409 State St-Scranton, IA 51462  
H: 712/652-3262 ~ C: 712/830-6128  
Email: bwright75@hotmail.com  
Web: www.wrightshowlambs.com

**2702-March Ram Lamb**  
Information Sale Day

**2703-February Ewe Lamb**  
Information Sale Day

**2704-March Ewe Lamb**  
Information Sale Day

*Consigned By*

## **2WF/WIED & FOLLIS**

David Wied

PO Box 176-New Home, TX 79383  
H: 806/924-7285 ~ C: 806/778-8585  
Email: wieddr@aol.com

**2705-February Ram Lamb**  
Information Sale Day



**2706-March Ram Lamb**  
Information Sale Day

**2707-February Ewe Lamb**  
Information Sale Day

**2708-March Ewe Lamb**  
Information Sale Day

**2709-March Ewe Lamb**  
Information Sale Day:

*Consigned By*

## **KIRSCHTEN SHEEP FARM**

Shane & Kerry Kirschten  
5060 Jefferson Ave-Alton, IA 51003  
H: 712/756-8953 ~ C: 712/395-0377  
Email: kirschten@netllcwb.net

**2710-February Ram Lamb**  
Information Sale Day

**2711-February Ewe Lamb**  
Information Sale Day

*Consigned By*

## **IMAGE CLUB LAMBS**

Scott Layne

4113 Beyer Park Dr  
Modesto, CA 95357  
H: 209/549-7849 ~ C: 209/402-7235  
Email: sdayne@sbcglobal.net  
Web: www.imageclublambs.com

**2712-Yearling Ram**  
Information Sale Day

**2713-Yearling Ewe**  
Information Sale Day

**2714-February Ram Lamb**  
Information Sale Day

**2715-March Ram Lamb**  
Information Sale Day

**2716-April Ram Lamb**  
Information Sale Day

**2717-March Ewe Lamb**  
Information Sale Day

*Consigned By*

## **ELLERBROCK CLUB LAMBS**

Jeff & Brad Ellerbrock  
13383 E 2000th St-Atkinson, IL 61235  
C: 309/657-7515  
Email: bellerbrock@nbsmail.net  
Web: www.ellerbrockclublambs.com

**2718-Yearling Ram**  
Information Sale Day

**2719-Yearling Ram**  
Information Sale Day

**2720-Yearling Ram**  
Information Sale Day

**2721-Yearling Ewe**  
Information Sale Day

**2722-February Ram Lamb**  
Information Sale Day

**2723-February Ram Lamb**  
Information Sale Day

**2724-February Ram Lamb**  
Information Sale Day

**2725-February Ram Lamb**  
Information Sale Day

**2726-February Ram Lamb**  
Information Sale Day

**2727-March Ram Lamb**  
Information Sale Day

**2728-March Ram Lamb**  
Information Sale Day

**2729-March Ram Lamb**  
Information Sale Day

**2730-April Ram Lamb**  
Information Sale Day

**2731-April Ram Lamb**  
Information Sale Day

**2732-January Ewe Lamb**  
Information Sale Day

**2733-February Ewe Lamb**  
Information Sale Day

**2734-February Ewe Lamb**  
Information Sale Day

**2735-February Ewe Lamb**  
Information Sale Day

**2736-February Ewe Lamb**  
Information Sale Day

## Sires ~ Dams

# MIDWEST STUD RAM SALE

**2737-March Ewe Lamb**  
Information Sale Day

**2738-March Ewe Lamb**  
Information Sale Day

**2739-March Ewe Lamb**  
Information Sale Day

**2740-March Ewe Lamb**  
Information Sale Day

**2741-March Ewe Lamb**  
Information Sale Day

**2742-April Ewe Lamb**  
Information Sale Day

**2743-April Ewe Lamb**  
Information Sale Day

---

*Consigned By*  
**REXWINKLE-SPROUL  
CLUB LAMBS**

Rick Rexwinkle/Jo Dee Sproul  
PO Box 611-Barnsdall, OK 74002  
C: 918/637-2304

---

**2744-March Ewe Lamb**  
Information Sale Day

**2745-March Ewe Lamb**  
Information Sale Day

**2746-April Ewe Lamb**  
Information Sale Day

---

*Consigned By*  
**SLACK CLUB LAMBS**

Tom Slack  
1022 W 1300 N  
North Manchester, IN 46962  
H: 260/982-8714 ~ C: 260/750-7399  
Email: luvmysheep@aol.com

---

**2747-January Ram Lamb**  
Information Sale Day

**2748-February Ram Lamb**  
Information Sale Day

**2749-March Ram Lamb**  
Information Sale Day

**2750-February Ewe Lamb**  
Information Sale Day

**2751-March Ewe Lamb**  
Information Sale Day

# HAMPSHIRE

---

*Consigned By*  
**HALL CLUB LAMBS**

John Hall  
23315 Chestertown Rd  
Chestertown, MD 21620  
H: 410/778-1768 ~ C: 410/708-8781  
Email: hallclublambs@gmail.com  
Web: www.hallclublambs.com

---

**2752-March Ewe Lamb**  
Information Sale Day

---

*Consigned By*  
**JBJ CLUB LAMBS**

Jeff & Billy Johnson  
W8778 Kilkenny Rd-Delavan, WI 53115  
H: 608/883-2991 ~ C: 608/289-5686  
Email: cfsfeed@yahoo.com

---

**2753-Yearling Ram**  
Information Sale Day

**2754-February Ewe Lamb**  
Information Sale Day

**2755-March Ewe Lamb**  
Information Sale Day

**2756-April Ewe Lamb**  
Information Sale Day

Our Hampshire lambs will be sired by a ram of  
Jimmy Miller breeding.

---

*Consigned By*  
**AWTR CLUB LAMBS**

Keith Anderson  
47932 298th St-Alcester, SD 57001  
C: 605/261-1282  
Email: keithanderson@alliancecom.net  
Web: www.clublambpage.com

---

**2757-January Ewe Lamb**  
Information Sale Day

**2758-February Ewe Lamb**  
Information Sale Day

**2759-February Ewe Lamb**  
Information Sale Day

**2760-March Ewe Lamb**  
Information Sale Day

**2761-March Ewe Lamb**  
Information Sale Day



Champion Hampshire February Ram Lamb  
from Illinois that went to Iowa at \$8,000  
in the 2010 Midwest Classic Wether Sire  
Sale.

**2762-April Ewe Lamb**  
Information Sale Day

**2763-April Ewe Lamb**  
Information Sale Day

---

*Consigned By*  
**M&M LIVESTOCK**

Mickey & Melea Cook  
260 Straylott Rd-Franklin, GA 30217  
H: 706/675-8908 C: 706/302-9508  
Email: 2livestock08@live.com  
Web: www.mandmlivestock.com

---

**2764-April Ram Lamb**  
Information Sale Day

**2765-April Ewe Lamb**  
Information Sale Day

**2766-April Ewe Lamb**  
Information Sale Day



**Sires ~ Dams**

**MIDWEST STUD RAM SALE**

# HAMPSHIRE



\$20,000 Hampshire February Ram Lamb in the 2010 Midwest Classic Wether Sire Sale. An Iowa entry sold to an Iowa buyer.

*Consigned By*

## **RULE SHEEP COMPANY**

Tyson Rule

PO Box 27-Hawarden, IA 51023

H: 712/552-7280

### **2767-January Ram Lamb**

Information Sale Day

### **2768-January Ram Lamb**

Information Sale Day

### **2769-February Ram Lamb**

Information Sale Day

### **2770-February Ram Lamb**

Information Sale Day

### **2771-March Ram Lamb**

Information Sale Day

### **2772-March Ram Lamb**

Information Sale Day

### **2773-April Ram Lamb**

Information Sale Day

### **2774-April Ram Lamb**

Information Sale Day

### **2775-January Ewe Lamb**

Information Sale Day

### **2776-January Ewe Lamb**

Information Sale Day

### **2777-February Ewe Lamb**

Information Sale Day

### **2778-February Ewe Lamb**

Information Sale Day

### **2779-March Ewe Lamb**

Information Sale Day

### **2780-March Ewe Lamb**

Information Sale Day

### **2781-April Ewe Lamb**

Information Sale Day

### **2782-April Ewe Lamb**

Information Sale Day

### **3694-February Ewe Lamb**

Information Sale Day

### **3695-February Ewe Lamb**

Information Sale Day

### **3696-March Ewe Lamb**

Information Sale Day

### **3697-March Ewe Lamb**

Information Sale Day

### **3698-March Ewe Lamb**

Information Sale Day

### **3699-March Ewe Lamb**

Information Sale Day

### **3700-March Ewe Lamb**

Information Sale Day

### **3701-April Ewe Lamb**

Information Sale Day

### **3702-April Ewe Lamb**

Information Sale Day

### **3703-April Ewe Lamb**

Information Sale Day



*Consigned By*  
**MILLER FARMS**

Kody Miller

20067 462nd Ave-Bruce, SD 57220

H: 605/627-5247 ~ C: 605/690-1997

Email: kodymillercattle@hotmail.com

Web: www.millerangusfarms.com

### **2783-March Ram Lamb**

Information Sale Day

*Consigned By*  
**HAYS BROTHERS  
CLUB LAMBS**

Matthew Hays ~ 785/438-0339

3427 Linn Rd-Perry, KS 66073

Email: hays.m@hotmail.com

Web: www.hbclublambs.com

### **2784-January Ram Lamb**

Information Sale Day

Sired by "Bullet"

### **2785-February Ram Lamb**

Information Sale Day

Sired by "Posi-Trac".

### **2786-February Ram Lamb**

Information Sale Day

### **2787-April Ram Lamb**

Information Sale Day

Sired by "Bullet".

### **2788-January Ewe Lamb**

Information Sale Day

### **2789-February Ewe Lamb**

Information Sale Day

### **2790-February Ewe Lamb**

Information Sale Day

### **2791-April Ewe Lamb**

Information Sale Day

*Consigned By*

## **DANIELS CLUB LAMBS**

Daniels Club Lambs Daniels

4924 E Division Rd-Portland, IN 47371

H: 260/726-8639 ~ C: 260/726-0636

Email: bldaniels@bright.net

Web: www.danielsclublambs.com

### **2792-April Ewe Lamb**

Information Sale Day

***Substitute Entries  
Will Be Identified  
With a Line  
Under the Lot Number***

## Sires ~ Dams

# MIDWEST STUD RAM SALE

*Consigned By*  
**PUMPHREY FARM**

Keith Pumphrey  
356 Chamberlain Rd  
Walla Walla, WA 99362  
H: 509/529-0140 ~ C: 541/760-7930  
Email: c\_pumphrey@hotmail.com  
Web: www.pumphreysuffolks.com

**2793-April Ram Lamb**  
Information Sale Day

**2794-March Ewe Lamb**  
Information Sale Day

**2795-April Ewe Lamb**  
Information Sale Day

*Consigned By*  
**EDLER CLUB LAMBS**

Roy & Doug Edler  
1167 220th St-State Center, IA 50247  
H: 515/231-9957 ~ C: 515/290-1298  
roy.edler@boehringer-ingelheim.com  
Web: www.edlerclublambs.com

**2796-Yearling Ram**  
Information Sale Day

**2797-March Ewe Lamb**  
Information Sale Day

**2798-March Ewe Lamb**  
Information Sale Day

*Consigned By*  
**ALLISON MCGOLDEN CLUB LAMBS**

Allison McGolden  
PO Box 744-Arapaho, OK 73620  
H: 580/323-7198 ~ C: 580/331-9675  
Email: amcgolden@yahoo.com  
www.allisonmcgoldenclublambs.com

**2799-Yearling Ewe**  
Information Sale Day

**2800-March Ram Lamb**  
Information Sale Day

**2801-March Ewe Lamb**  
Information Sale Day

**2802-April Ewe Lamb**  
Information Sale Day

**MAIL BIDS & DELIVERY**

*Call* **ASSISTANCE**  
**573/442-8257 AVAILABLE**

# HAMPSHIRE

*Consigned By*  
**HEATH GEIMAN**

Heath Geiman ~ 316/304-922  
27411 W 4th N  
Garden Plain, KS 67050  
Email: geiman@msn.com  
Web: www.heathgeimanhamps.com

**2803-Yearling Ewe**  
Information Sale Day

**2804-Yearling Ewe**  
Information Sale Day

**2805-Yearling Ewe**  
Information Sale Day

**2806-Yearling Ewe**  
Information Sale Day

**2807-Yearling Ewe**  
Information Sale Day

**2808-Yearling Ewe**  
Information Sale Day

**2809-January Ram Lamb**  
Information Sale Day

**2810-February Ram Lamb**  
Information Sale Day

**2811-February Ewe Lamb**  
Information Sale Day

**2812-February Ewe Lamb**  
Information Sale Day

**2813-March Ewe Lamb**  
Information Sale Day

**2814-March Ewe Lamb**  
Information Sale Day

*Consigned By*  
**MORRIS-PIERSON CLUB LAMBS**

Leon Morris & Tyler Pierson  
10617 S Jardot-Perkins, OK 74059  
H: 405/612-2503 ~ C: 405/612-6172

**2815-February Ewe Lamb**  
Information Sale Day

**2816-February Ewe Lamb**  
Information Sale Day



1st Hampshire February Ewe Lamb in 2010 Midwest Classic Wether Sire Sale from Colorado to Michigan.

**2817-March Ewe Lamb**  
Information Sale Day

**2818-March Ewe Lamb**  
Information Sale Day

**2819-March Ewe Lamb**  
Information Sale Day

*Consigned By*  
**LEVENTINI CLUB LAMBS**

Michael Leventini  
624 S Indiana Ave-Modesto, CA 95357  
H: 209/529-2774 ~ C: 209/605-3274  
Email: mleventini@msn.com  
Web: www.leventiniclublamb.com

**2820-Yearling Ewe**  
Information Sale Day

**2821-Fall Ewe Lamb**  
Information Sale Day

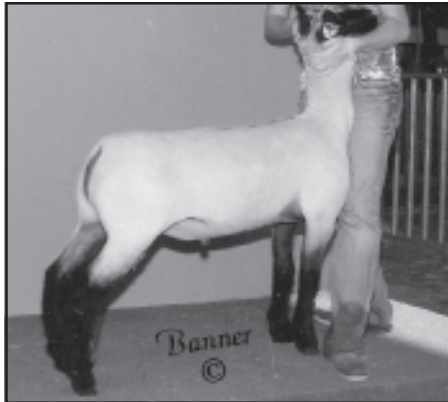
**2822-January Ram Lamb**  
Information Sale Day



**Sires ~ Dams**

**MIDWEST STUD RAM SALE**

# HAMPSHIRE



A March Hampshire Ram Lamb sold at \$7,500 in the 2010 Midwest Classic Wether Sire Sale to a trio of California buyers.

**2823-January Ram Lamb**  
Information Sale Day

**2824-February Ram Lamb**  
Information Sale Day

**2825-March Ram Lamb**  
Information Sale Day

**2826-January Ewe Lamb**  
Information Sale Day

**2827-February Ewe Lamb**  
Information Sale Day

Check our website for information and pictures in June. We will bring our best!

*Consigned By*  
**PRUNTY/DYER CLUB**

Clayton Dyer/Tim Prunty  
1777 Hwy J54-Clio, IA 50052  
C:641/414-5556  
Email:claytondyer@gmail.com  
Web:www.pruntydyerclublambs.com

**2828-February Ram Lamb**  
Information Sale Day



**2829-March Ewe Lamb**  
Information Sale Day

*Consigned By*  
**MCLAUGHLIN  
GRIFFIN SHEEP**

Willard McLaughlin  
400 CR 220-Craig, CO 81625  
H: 970/824-7136 ~ C: 970/629-0263  
Email: kmclaughlinsheep@live.com  
Web: www.clublambpage.com

**2830-Fall Ram Lamb**  
Information Sale Day

**2831-Fall Ewe Lamb**  
Information Sale Day

**2832-March Ram Lamb**  
Information Sale Day

**2833-January Ewe Lamb**  
Information Sale Day

**2834-February Ewe Lamb**  
Information Sale Day

**2835-March Ewe Lamb**  
Information Sale Day

**2836-April Ewe Lamb**  
Information Sale Day

*Consigned By*  
**FARAO CLUB LAMBS**

Jaime & Frank Farao  
28803 Gun Club Rd-Gustine, CA 95322  
H: 209/854-1033 ~ C: 209/777-1033  
Email: faraoclublamb@hotmail.com  
Web: www.faraoclublamb.com

**2837-Fall Ewe Lamb**  
**Farao 1027**

B: 10/25/2010  
S: Leventini 9093 588434  
D: Farao 5158 88840  
Farao 1027 is our best Fall ewe lamb. Her dam is a top producer in our flock. She is sired by "Hawk" our Leventini ram by "Player".

**2838-March Ram Lamb**  
Information Sale Day

**2839-April Ram Lamb**  
Information Sale Day

**2840-January Ewe Lamb**  
Information Sale Day

**2841-February Ewe Lamb**  
Information Sale Day

**2842-March Ewe Lamb**  
Information Sale Day

**2843-April Ewe Lamb**  
Information Sale Day

*Consigned By*  
**HULL CLUB LAMBS**

Justin Hull ~ 541/419-3021  
25281 Alfalfa Mkt Rd-Bend, OR 97701  
Email: hullclublambs@gmail.com  
Web: www.hullclublambs.com  
VFSCP ~ 07/2005

**2844-March Ram Lamb**  
Information Sale Day

**2845-April Ram Lamb**  
Information Sale Day

**2846-February Ewe Lamb**  
Information Sale Day

**2847-February Ewe Lamb**  
Information Sale Day

**2848-March Ewe Lamb**  
Information Sale Day

**2849-April Ewe Lamb**  
Information Sale Day

*Consigned By*  
**NOC SHEEP CENTER**

Bart Cardwell/Herdsmen  
PO Box 310-Tonkawa, OK 74653  
H: 580/628-6497 ~ C: 580/716-2550  
Email: bart.cardwell@north-ok.edu  
www.north-ok.edu/agriculture-science1

**2850-Yearling Ram**  
Information Sale Day

**2851-Yearling Ewe**  
Information Sale Day

**2852-Yearling Ewe**  
Information Sale Day

**2853-Yearling Ewe**  
Information Sale Day

**MAIL BIDS &  
CREDIT CARD PURCHASES  
WILL BE CHARGED A 5%  
CONVENIENCE FEE.**

**Sires ~ Dams**

**MIDWEST STUD RAM SALE**

*Consigned By*  
**SCHAEFER SHEEP  
& CATTLE**

Scott Schaefer  
2714 N Sangre-Stillwater, OK 74074  
H: 405/743-5646 ~ C: 405/612-2137  
scott@schaefersheepandcattle.com  
www.schaefersheepandcattle.com

**2854-Yearling Ewe**  
Information Sale Day

*Consigned By*  
**HICKEY LIVESTOCK**

Jace Hickey  
17035 Rd 26-Brush, CO 80723  
H: 970/467-0947 ~ C: 970/380-2861  
Email: jace@superiorlivestock.com  
Web: www.hickeylivestock.com

**2855-Yearling Ewe**  
Information Sale Day

**2856-February Ram Lamb**  
Information Sale Day

**2857-March Ram Lamb**  
Information Sale Day

**2858-February Ewe Lamb**  
Information Sale Day

**2859-February Ewe Lamb**  
Information Sale Day

**2860-March Ewe Lamb**  
Information Sale Day

**2900-February Ewe Lamb**  
Information Sale Day

*Consigned By*  
**KLUG FAMILY  
CLUB LAMBS**

Kevin Klug  
56628 893rd-Wynot, NE 68792  
H: 402/357-2147 ~ C: 402/841-8127  
Email: kmklug@gpcom.net

**2861-February Ewe Lamb**  
Information Sale Day

**2862-March Ewe Lamb**  
Information Sale Day

**2863-April Ewe Lamb**  
Information Sale Day

# HAMPSHIRE

*Consigned By*  
**PIRTLE FARMS**

Randy & Susan Pirtle  
397271 W 400 Rd-Copan, OK 74022  
H: 918/532-4553 ~ C: 918/440-4553  
Email: pcopan1@aol.com  
Web: www.clublambpage.com

**2864-Yearling Ewe**  
Information Sale Day

**2865-Yearling Ewe**  
Information Sale Day

**2866-February Ewe Lamb**  
Information Sale Day

**2867-March Ewe Lamb**  
Information Sale Day

**2868-April Ewe Lamb**  
Information Sale Day

*Consigned By*  
**OTT CLUB LAMBS**

Brad & Deb Ott  
RR 2 Box 41-Fairview, OK 73737  
H: 580/227-2060 ~ C: 580/794-9324  
Email: bott@pldi.net  
Web: www.ottclublambs.com

**2869-Yearling Ewe**  
Information Sale Day

**2870-January Ram Lamb**  
Information Sale Day

**2871-February Ram Lamb**  
Information Sale Day

**2872-February Ram Lamb**  
Information Sale Day

**2873-February Ram Lamb**  
Information Sale Day

**2874-February Ram Lamb**  
Information Sale Day

**2875-March Ram Lamb**  
Information Sale Day

**2876-January Ewe Lamb**  
Information Sale Day



An Oklahoma Hampshire March Ram Lamb sold to Texas at \$3,400 in the 2010 Midwest Classic Wether Sire Sale.

**2877-February Ewe Lamb**  
Information Sale Day

**2878-February Ewe Lamb**  
Information Sale Day

*Consigned By*  
**HILL COUNTRY  
SHOW LAMBS**

Rodney & Sheri Yates  
PO Box 1491-Boerne, TX 78006  
H: 830/249-3070 ~ C: 830/446-9031  
Email: hcsyates@yahoo.com  
Web: www.hillcountrysuffolks.com

**2879-Yearling Ewe**  
**Yates HCY 230**  
B: RR NN

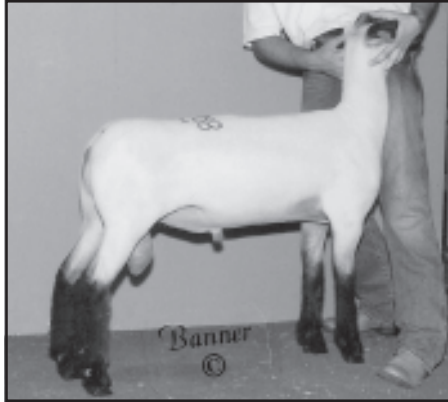
**2880-Yearling Ewe**  
**Yates HCY 258**  
B: RR NN



**Sires ~ Dams**

**MIDWEST STUD RAM SALE**

# HAMPSHIRE



January Hampshire Ram Lamb from Michigan sold at \$8,000 to Indiana in the 2010 Midwest Classic Wether Sire Sale.

## 2881-Yearling Ewe

**Yates HCY 289**

B: RR NN

## 2882-January Ram Lamb

**Yates HCY 272**

B: 1/5/2011 Twin RR NN

Long bodied, muscular, wide loin and hip.

## 2883-February Ram Lamb

**Yates HCY 277**

B: 2/7/2011 Twin RR NN

Tight hearted with good rib shape, length of body, muscle.

## 2884-February Ram Lamb

**Yates HCY BL401**

B: 2/20/2011 Twin RR NN

"The Governor" Hancock 91 (Rupp Plus x Leverage).

## 2885-March Ram Lamb

## Yates HCY BL1403

B: 3/1/2011 RR NN

Power, bone and lots of look. Out of Hancock 91 (Rupp Plus x Leverage)

## 2886-March Ram Lamb

**Yates HCY 508**

B: 3/24/2011

## 2887-April Ram Lamb

**Yates HCY BL693**

B: 4/11/2011 Twin

"Lucky 13" x "Kool Kat Ewe". Power, look, big bone, perfect rib shape and burly legs.

## 2888-April Ram Lamb

**Yates HCY BL694**

B: 4/13/2011 Twin

Big boned, power with look, big wide hip.

## 2889-January Ewe Lamb

**Yates HCY 275**

B: RR NN

## 2890-February Ewe Lamb

**Yates HCY 280**

B: 2/17/2011 Twin RR NN

## 2891-March Ewe Lamb

**Yates HCY 315**

B: 3/25/2011 Twin

## 2892-March Ewe Lamb

**Yates HCY 330**

B: 3/27/2011 Twin

## 2893-April Ewe Lamb

**Yates HCY BL720**

B: 4/17/2011

*Consigned By*

## OVERMAN CLUB LAMBS

Mark Overman

12370 WCR 78-Eaton, CO 80615  
H: 970/686-2219 ~ C: 970/227-3869

Email: onyxover@aol.com

Web: www.clublambpage.com

## 2894-February Ram Lamb

Information Sale Day

## 2895-March Ram Lamb

Information Sale Day

## 2896-April Ram Lamb

Information Sale Day

## 2897-February Ewe Lamb

Information Sale Day

## 2898-March Ewe Lamb

Information Sale Day

## 2899-April Ewe Lamb

Information Sale Day

*Consigned By*

## WHEATON HAMPSHIRE

Lee, Denise, Megan & Brant Wheaton

2297 W Vermontville Hwy

Charlotte, MI 48813

H: 517/543-7086 ~ C: 517/203-9911

## 2901-Fall Ewe Lamb

Information Sale Day

## 2902-Fall Ewe Lamb

Information Sale Day

## 2903-January Ram Lamb

Information Sale Day

## 2904-February Ram Lamb

Information Sale Day

## 2905-March Ram Lamb

Information Sale Day

## 2906-January Ewe Lamb

Information Sale Day

## 2907-January Ewe Lamb

Information Sale Day

## 2908-January Ewe Lamb

Information Sale Day

## 2909-February Ewe Lamb

Information Sale Day

## 2910-February Ewe Lamb

Information Sale Day

## 2911-February Ewe Lamb

Information Sale Day

## 2912-March Ewe Lamb

Information Sale Day

**MAIL BIDS & DELIVERY**

*Call* **ASSISTANCE**  
**573/442-8257 AVAILABLE**

## Sires ~ Dams

# MIDWEST STUD RAM SALE

**2913-March Ewe Lamb**  
Information Sale Day

**2914-April Ewe Lamb**  
Information Sale Day

**2915-April Ewe Lamb**  
Information Sale Day

The Midwest Stud Ram Sale is the only sale we attend. Expect a string consignment sired by "Untouchable", "Truckload" and "Napoleon". Since '05, we have been honored to win Supreme Champion Ram, Supreme Champion Ewe and the Overall Best Consignment Award. '11 has been a great year and we look forward to seeing old friends and making new ones this year.

---

*Consigned By*

**BEGALKA CLUB LAMBS**

Donnie Begalka ~ 605/873-9309  
46576 187th St  
Castlewood, SD 57223

---

**2916-March Ram Lamb**  
Information Sale Day

**2917-April Ram Lamb**  
Information Sale Day

**2918-March Ewe Lamb**  
Information Sale Day

**2919-March Ewe Lamb**  
Information Sale Day

**2920-April Ewe Lamb**  
Information Sale Day

**2921-April Ewe Lamb**  
Information Sale Day

**2922-April Ewe Lamb**  
Information Sale Day

**2923-April Ewe Lamb**  
Information Sale Day

---

*Consigned By*

**TURNER SHOW STOCK**

Andy & Jeribeth Turner  
1220 Hynds Ranch Rd  
VanAlstyne, TX 75495  
H: 254/290-0420 ~ C: 903/816-1208  
Email: turnershowstock@verison.net

---

**2924-Yearling Ram**  
Information Sale Day

**2925-Yearling Ewe**  
Information Sale Day

# HAMPSHIRE

**2926-Yearling Ewe**  
Information Sale Day

**2927-Yearling Ewe**  
Information Sale Day

**2928-Yearling Ewe**  
Information Sale Day

**2929-Yearling Ewe**  
Information Sale Day

**2930-Yearling Ewe**  
Information Sale Day

**2931-April Ram Lamb**  
Information Sale Day

**2932-February Ewe Lamb**  
Information Sale Day

**2933-February Ewe Lamb**  
Information Sale Day

**2934-March Ewe Lamb**  
Information Sale Day

**2935-March Ewe Lamb**  
Information Sale Day

**2936-April Ewe Lamb**  
Information Sale Day

**2937-April Ewe Lamb**  
Information Sale Day

---

*Consigned By*

**LANIER FARMS**

Joel Lanier  
151 CR 309-Seminole, TX 79360  
H: 432/758-9067 ~ C: 432/770-0483  
Email: lanierjoel@yahoo.com  
Web: www.lanierclublambs.com

---

**2938-Yearling Ram**  
Information Sale Day

**2939-Yearling Ewe**  
Information Sale Day

**2940-March Ram Lamb**  
Information Sale Day

**2941-April Ram Lamb**  
Information Sale Day



An Oklahoma March Hampshire Ram Lamb that brought \$3,500 from an Oklahoma buyer in the 2010 Midwest Classic Wether Sire Sale.

**2942-March Ewe Lamb**  
Information Sale Day

**2943-April Ewe Lamb**  
Information Sale Day

---

*Consigned By*

**NEAL SHOW LAMBS**

Jeff Neal ~ 419/356-0128  
778 E CR 50-Tiffin, OH 44883  
Email: jeffneal0@gmail.com  
Web: www.nealshowlambs.com

---

**2944-February Ram Lamb**  
Information Sale Day

**2945-February Ram Lamb**  
Information Sale Day

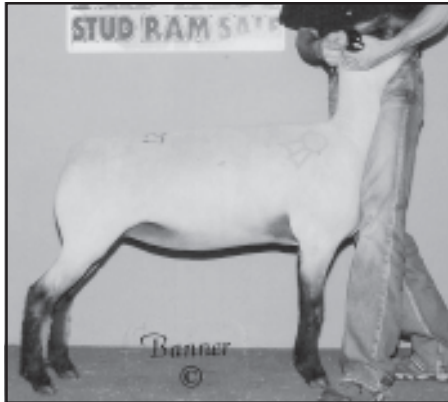
**2946-February Ewe Lamb**  
Information Sale Day



**Sires ~ Dams**

**MIDWEST STUD RAM SALE**

# HAMPSHIRE



Champion Hampshire Yearling Ewe at \$5,500 from Texas going to Michigan in the 2010 Midwest Classic Wether Sire Sale.

*Consigned By*  
**SHROYER  
SHOW STOCK**

John & Lori Shroyer  
3296 Township Rd 35  
DeGraff, OH 43318  
H: 934/585-4010 C: ~ 937/935-0830  
Web: www.shroyershowstock.com

**2947-Yearling Ewe**  
Information Sale Day

**2948-Yearling Ewe**  
Information Sale Day

**2949-February Ram Lamb**  
Information Sale Day

**2950-February Ram Lamb**  
Information Sale Day

**3601-March Ram Lamb**  
Information Sale Day

**3602-January Ewe Lamb**  
Information Sale Day



**3603-February Ewe Lamb**  
Information Sale Day

**3604-March Ewe Lamb**  
Information Sale Day

**3605-April Ewe Lamb**  
Information Sale Day

*Consigned By*  
**J&J SHOW LAMBS**

Mike/Judy/Jeff/Sara/Cody Beran  
W6650 Stateline Rd  
Walworth, WI 53184  
H: 262/736-3565 ~ C: 262/949-8568  
Email: showlambs@hotmail.com  
Web: www.clublambpage.com

**3606-March Ram Lamb**  
Information Sale Day

**3607-April Ram Lamb**  
Information Sale Day

**3608-February Ewe Lamb**  
Information Sale Day

**3609-March Ewe Lamb**  
Information Sale Day

**3610-April Ewe Lamb**  
Information Sale Day

*Consigned By*  
**MILLER HAMPSHIRE**

Jim Miller ~ 806/487-6891  
1550A CR 121-Seagraves, TX 79359  
Email: millerhampshires@hotmail.com  
Web: www.millerhampshires.com

**3611-Yearling Ram**  
Information Sale Day

**3612-Yearling Ram**  
Information Sale Day

**3613-Yearling Ewe**  
Information Sale Day

**3614-Yearling Ewe**  
Information Sale Day

**3615-Yearling Ewe**  
Information Sale Day

**3616-Yearling Ewe**  
Information Sale Day

**3617-Yearling Ewe**  
Information Sale Day

**3618-Yearling Ewe**  
Information Sale Day

**3619-Yearling Ewe**  
Information Sale Day

**3620-Yearling Ewe**  
Information Sale Day

**3621-Yearling Ewe**  
Information Sale Day

**3622-Yearling Ewe**  
Information Sale Day

**3623-Yearling Ewe**  
Information Sale Day

**3624-Yearling Ewe**  
Information Sale Day

**3625-Yearling Ewe**  
Information Sale Day

**3626-Yearling Ewe**  
Information Sale Day

**3627-Yearling Ewe**  
Information Sale Day

**3628-Yearling Ewe**  
Information Sale Day

**3629-Yearling Ewe**  
Information Sale Day

**3630-Yearling Ewe**  
Information Sale Day

**3631-Yearling Ewe**  
Information Sale Day

**3632-Yearling Ewe**  
Information Sale Day

**3633-Yearling Ewe**  
Information Sale Day

**3634-Yearling Ewe**  
Information Sale Day

**3635-Yearling Ewe**  
Information Sale Day

**3636-Yearling Ewe**  
Information Sale Day

**3637-Yearling Ewe**  
Information Sale Day

**3638-Yearling Ewe**  
Information Sale Day

**Sires ~ Dams**

**MIDWEST STUD RAM SALE**

**3639-Yearling Ewe**  
Information Sale Day

**3640-Yearling Ewe**  
Information Sale Day

---

*Consigned By*  
**KENNEDY CLUB LAMBS**

Matt Kennedy ~ 979/224-0081  
PO Box 30-Mulhall, OK 73063  
Email: matt.kennedy147@gmail.com  
Web: www.kennedyclublambs.com

---

**3641-March Ram Lamb**  
Information Sale Day

**3642-April Ram Lamb**  
Information Sale Day

**3643-April Ewe Lamb**  
Information Sale Day

---

*Consigned By*  
**HINDMAN  
SHOW LAMBS**

Mike & Mark Hindman ~ 515/491-7829  
1648 640th Ave-Albia, IA 52531

---

**3644-February Ram Lamb**  
Information Sale Day

**3645-March Ram Lamb**  
Information Sale Day

**3646-April Ram Lamb**  
Information Sale Day

**3647-March Ewe Lamb**  
Information Sale Day

**3648-March Ewe Lamb**  
Information Sale Day

---

*Consigned By*  
**POWERCAT  
CLUB LAMBS**

Jim Nelssen  
7234 Tuttle Creek Blvd  
Manhattan, KS 66503  
H: 785/776-1407 ~ C: 785/200-4543  
Email:jnelssen@ksu.edu

---

**3649-February Ram Lamb**  
**Nelssen 11070**

**B:** 2/18/2011 Twin RR NN  
**S:** Miller O-550S  
**D:** Ellerbrock 7143

We decided to bring an excellent consignment by the ever popular Miller 4-D Large! This is a double bred Miller ram. We purchased the mother at the '09 Midwest Sale, where she was the 1st Place March Hampshire Ewe Lamb. She is out of "Sedalia Miller." This double bred "Masterpiece" son is a remendous genetic package!

**MIDWEST STUD RAM SALE**

# HAMPSHIRE

**3650-March Ram Lamb**

**Nelssen 11104**

**B:** 3/16/2011 Twin RR NN  
**S:** "King Pin" Allred/Elliott  
**D:** Allred/Elliott 9001

What a pedigree! "King Pin" bred to the popular Lot #1 ewe in the Allred/Elliott "You Pick the Buck Sale" of '10! Allred/Elliott 9001 is "Authentic's" maternal sister. This is a line-bred and predictable of a composure ram as you'll ever find! Shallow, with cool rib-shape and as expressive in his rack as we can make one!

**3651-March Ram Lamb**

**Nelssen 11130**

**B:** 3/14/2011 Twin RR NN  
**S:** Miller O-550S  
**D:** Miller Y-514 ET

A real crowd favorite from day one and what an awesome pedigree! His mother was the second place yearling ewe from the '10 Midwest Sale! Miller Y-514 is out of "Untouchable" bred to a flush mate to "Master Copy." With Miller 4-D Large on the top side-Look out!!

**3652-February Ewe Lamb**

**Nelssen 11062**

**B:** 2/16/2011 Twin RR NN  
**S:** Miller O-550S  
**D:** Simpson 7053

Should be a keeper ewe lamb! Out of an "Icon" daughter and Miller 4-D Large. The 4-D Large females are going to become legendary!

**3653-March Ewe Lamb**

Information Sale Day

To young to pick, however, will be out of Miller 4-D Large.

**3654-April Ewe Lamb**

Information Sale Day - RR NN

To you to pick but will be a Miller 4-D Large daughter.

**3655-April Ewe Lamb**

Information Sale Day

To young to pick but will be out of Miller 4-D Large or one of his best sons!

---

*Consigned By*  
**GOODWIN CLUB  
LAMBS**

Dale Goodwin ~ 580/763-2547  
8550 W North Ave  
Ponca City, OK 74601  
Email: dgoodwin@poncacity.net

---

**3656-February Ewe Lamb**

Information Sale Day



A California threesome bought this Nebraska Hampshire February Ram Lamb at \$7,200 in the 2010 Midwest Classic Wether Sire Sale.

**3657-March Ewe Lamb**

Information Sale Day

Lambs will be sired by "Incentive", our new Allred/Elliott ram (Cottontop x (Composure x Leverage)). He has stamped this lambcrop with structural correctness, and loads of muscle shape and eye appeal. The kids have finally talked me into bringing a set of lambs from our keeper pen. We will bring lambs that are not only impressive visually, but more importantly from our standpoint, are backed genetically by a strong female lines. We have great confidence in their ability to produce the right kind.

---

*Consigned By*  
**MCILRATH CLUB  
LAMBS**

Harold & Jolene McIlrath  
3259 Sanford Ave-Laurel, IA 50141  
H: 641/476-3405 ~ C: 641/476-5125  
Email: samuelm@heartofiowa.net  
Web: www.clublambpage.com

---

**3658-February Ram Lamb**

Information Sale Day

**3659-March Ram Lamb**

Information Sale Day



**Sires ~ Dams**

# HAMPSHIRE



5th March Ram Lamb at the 2010 Midwest Stud Ram Sale sold to California at \$5,000.

**3667-April Ewe Lamb**  
Information Sale Day

**3668-April Ewe Lamb**  
Information Sale Day

*Consigned By*  
**HORNER SHOW LAMBS**

Dick Horner  
RR 1 Box 388D-Vandalia, IL 62471  
H: 618/283-7004 ~ C: 618/292-7627  
Email: [hornershowlambs@hotmail.com](mailto:hornershowlambs@hotmail.com)

**3669-March Ram Lamb**  
Information Sale Day

**3670-March Ewe Lamb**  
Information Sale Day

*Consigned By*  
**CHABOT SHOW LAMBS**

Darick Chabot  
35910 FM 914-Dublin, TX 76446  
H: 254/785-2453 ~ C: 254/485-3016  
Email: [darickc@earthlink.net](mailto:darickc@earthlink.net)  
Web: [www.clublambpage.com](http://www.clublambpage.com)

**3671-March Ram Lamb**  
Information Sale Day

**3672-April Ram Lamb**  
Information Sale Day

**3673-March Ewe Lamb**  
Information Sale Day

**3674-March Ewe Lamb**  
Information Sale Day

**3675-April Ewe Lamb**  
Information Sale Day

**3676-April Ewe Lamb**  
Information Sale Day

*Consigned By*  
**CREGO LIVESTOCK**

Larry, Diana, Joaquin & Justin Crego  
7710 Livestock Lane  
Ft Collins, CO 80524  
H: 970/482-6958 ~ C: 970/217-9059

**3677-Yearling Ram**  
Information Sale Day

**3678-Yearling Ewe**  
Information Sale Day

**3679-Yearling Ewe**  
Information Sale Day

**3680-Yearling Ewe**  
Information Sale Day

**3681-Yearling Ewe**  
Information Sale Day

**3682-January Ram Lamb**  
Information Sale Day

**3683-January Ram Lamb**  
Information Sale Day

**3684-February Ram Lamb**  
Information Sale Day

**3685-February Ram Lamb**  
Information Sale Day

**3686-March Ram Lamb**  
Information Sale Day

**3687-January Ewe Lamb**  
Information Sale Day

**3688-January Ewe Lamb**  
Information Sale Day

**3689-January Ewe Lamb**  
Information Sale Day

**3690-January Ewe Lamb**  
Information Sale Day

**3691-February Ewe Lamb**  
Information Sale Day

**3692-February Ewe Lamb**  
Information Sale Day

**3693-March Ewe Lamb**  
Information Sale Day

*Consigned By*  
**HARRELL CLUB LAMBS**

Joe Harrell ~ 580/591-1091  
24848 W Gore Blvd  
Indiahoma, OK 73552

**3660-Yearling Ewe**  
Information Sale Day

**3661-Yearling Ewe**  
Information Sale Day

**3662-Yearling Ewe**  
Information Sale Day

**3663-Yearling Ewe**  
Information Sale Day

**3664-February Ewe Lamb**  
Information Sale Day

**3665-March Ewe Lamb**  
Information Sale Day

**3666-March Ewe Lamb**  
Information Sale Day



**MAIL BIDS & DELIVERY**  
*Call* **ASSISTANCE**  
**573/442-8257 AVAILABLE**

**MAIL BIDS & CREDIT CARD PURCHASES WILL BE CHARGED A 5% CONVENIENCE FEE.**

**Sires ~ Dams**

**MIDWEST STUD RAM SALE**

Consigned By  
**CABANISS  
CLUB LAMBS**

Riley & Morgan Cabaniss  
Rt 1 Box 19-Arapaho, OK 73620  
H: 580/323-2802 ~ C: 580/445-6240  
Email: cabanissok@itinet.net  
Web: www.cabanissok.tripod.com

**3704-Yearling Ram**  
Information Sale Day

**3705-Yearling Ram**  
Information Sale Day

**3706-Fall Ram Lamb**  
Information Sale Day

**3707-February Ram Lamb**  
Information Sale Day

**3708-February Ram Lamb**  
Information Sale Day

**3709-March Ram Lamb**  
Information Sale Day

**3710-March Ram Lamb**  
Information Sale Day

**3711-April Ram Lamb**  
Information Sale Day

**3712-April Ram Lamb**  
Information Sale Day

**3713-March Ewe Lamb**  
Information Sale Day

**3714-March Ewe Lamb**  
Information Sale Day

**3715-April Ewe Lamb**  
Information Sale Day

**3716-April Ewe Lamb**  
Information Sale Day

Check our website closer to sale time for photos  
and additional information.

Consigned By  
**ALLRED/ELLIOTT**

Clay Elliott  
17422 Elm St W-Calumet, OK 73014  
H: 405/422-3313 ~ C: 575/635-6340  
Email: lilielliott@hotmail.com

**3717-Yearling Ewe**  
Information Sale Day

**3718-Yearling Ewe**  
Information Sale Day

# HAMPSHIRE

**3719-January Ram Lamb**  
Information Sale Day

**3720-January Ram Lamb**  
Information Sale Day

**3721-January Ram Lamb**  
Information Sale Day

**3722-January Ram Lamb**  
Information Sale Day

**3723-January Ram Lamb**  
Information Sale Day

**3724-February Ram Lamb**  
Information Sale Day

**3725-February Ram Lamb**  
Information Sale Day

**3726-February Ram Lamb**  
Information Sale Day

**3727-February Ram Lamb**  
Information Sale Day

**3728-February Ram Lamb**  
Information Sale Day

**3729-March Ram Lamb**  
Information Sale Day

**3730-March Ram Lamb**  
Information Sale Day

**3731-March Ram Lamb**  
Information Sale Day

**3732-March Ram Lamb**  
Information Sale Day

**3733-March Ram Lamb**  
Information Sale Day

**3734-April Ram Lamb**  
Information Sale Day

**3735-April Ram Lamb**  
Information Sale Day

**3736-April Ram Lamb**  
Information Sale Day

**3737-April Ram Lamb**  
Information Sale Day

**3738-April Ram Lamb**  
Information Sale Day



9th Yearling Ram at the 2010 Midwest Stud  
Ram Sale sold to California at \$2,200.

**3739-January Ewe Lamb**  
Information Sale Day

**3740-January Ewe Lamb**  
Information Sale Day

**3741-February Ewe Lamb**  
Information Sale Day

**3742-February Ewe Lamb**  
Information Sale Day

**3743-March Ewe Lamb**  
Information Sale Day

**3744-March Ewe Lamb**  
Information Sale Day

**3745-April Ewe Lamb**  
Information Sale Day

**3746-April Ewe Lamb**  
Information Sale Day

**Substitute Entries  
Will Be Identified  
With a Line  
Under the Lot Number**



**Sires ~ Dams**

**MIDWEST STUD RAM SALE**