

CROSSBREDS



A South Dakota Crossbred February Ram Lamb sold at \$4,000 to Oklahoma in the 2010 Midwest Classic Wether Sire Sale.

Consigned By

RUDIN CLUB LAMBS

Gene & Phillis Rudin ~ 319/642-3292
348 W Washington St
Marengo, IA 52301

3201-January Ram Lamb

Information Sale Day

3202-January Ewe Lamb

Information Sale Day

Consigned By

SIMPSON LIVESTOCK

Jason Simpson
20727 WCR 84-Ault, CO 80610
H: 970/834-2610 ~ C: 970/371-0276
Email: jsimpsoncl@aol.com
Web: www.simpsonlivestock.com

3203-Yearling Ram

Information Sale Day

Consigned By

SCHEEL CLUB LAMBS

Jim & Audra Scheel
Box 165-Belvidere, SD 57521
H: 605/344-2597 ~ C: 605/545-1521
Email: cbwjim@yahoo.com
Web: www.scheellivestock.com

3204-March Ram Lamb

Information Sale Day

3205-February Ewe Lamb

Information Sale Day
Hampshire x Suffolk

Consigned By

STEWART SHOW LAMBS

John Stewart
1930 235th St-Marshalltown, IA 50158
H: 641/753-6981 ~ C: 319/721-2901
Email: jstewart@midioawatools.com
Web: www.stewartshowlambs.com

3206-Yearling Ram

Information Sale Day

3207-February Ram Lamb

Information Sale Day

3208-March Ram Lamb

Information Sale Day

3209-March Ram Lamb

Information Sale Day

3210-March Ewe Lamb

Information Sale Day

3211-March Ewe Lamb

Information Sale Day

Consigned By

FAIRLEY FARMS

Brian Fairley
45255 313st-Gayville, SD 57031
H: 605/267-4877 ~ C: 605/660-8025
Email: fairley1@hotmail.com
Web: www.fairleyfarms.com

3212-February Ram Lamb

Information Sale Day

3213-April Ram Lamb

Information Sale Day

Consigned By

MEDHUS CLUB LAMBS

Gary Medhus
10991 Hwy T38N-Gilman, IA 50106
H: 641/498-7840 ~ C: 641/751-2890
Email: pam_medhus@yahoo.com

3214-January Ram Lamb

Information Sale Day

3215-February Ram Lamb

Information Sale Day

3216-January Ewe Lamb

Information Sale Day

3217-February Ewe Lamb

Information Sale Day

3218-March Ewe Lamb

Information Sale Day

Consigned By

HARMS SHOW LAMBS

Larry, Barb & Brian Harms
27638 E 2450 N Rd
Lexington, IL 61753
C: 309/825-3485

Email: hrmsshowlambs@prairieinet.net

Web: www.clublambpage.com

3219-February Ram Lamb

Information Sale Day

3220-February Ram Lamb

Information Sale Day

3221-March Ram Lamb

Information Sale Day

3222-March Ram Lamb

Information Sale Day

3223-April Ram Lamb

Information Sale Day

3224-April Ram Lamb

Information Sale Day

3225-February Ewe Lamb

Information Sale Day

3226-March Ewe Lamb

Information Sale Day

Hampshire x Suffolk

Consigned By

WRIGHT CLUB LAMBS

BJ Wright
409 State St-Scranton, IA 51462
H: 712/652-3262 ~ C: 712/830-6128
Email: bwright75@hotmail.com
Web: www.wrightshowlambs.com

3227-February Ram Lamb

Information Sale Day

3228-March Ram Lamb

Information Sale Day

Sires ~ Dams

MIDWEST STUD RAM SALE

Consigned By
2WF/WIED & FOLLIS

David Wied
PO Box 176-New Home, TX 79383
H: 806/924-7285 ~ C: 806/778-8585
Email: wieddr@aol.com

3229-Yearling Ewe
Information Sale Day

3230-Yearling Ewe
Information Sale Day

3231-Yearling Ewe
Information Sale Day
Hampshire x Suffolk

Consigned By
IMAGE CLUB LAMBS

Scott Layne
4113 Beyer Park Dr
Modesto, CA 95357
H: 209/549-7849 ~ C: 209/402-7235
Email: sdlayne@sbcglobal.net
Web: www.imageclublambs.com

3232-Yearling Ram
Information Sale Day

3233-Yearling Ewe
Information Sale Day

3234-Yearling Ewe
Information Sale Day

3235-February Ram Lamb
Information Sale Day

3236-March Ram Lamb
Information Sale Day

3237-April Ram Lamb
Information Sale Day

3238-February Ewe Lamb
Information Sale Day

3239-March Ewe Lamb
Information Sale Day

3240-April Ewe Lamb
Information Sale Day
Suffolk x Hampshire

**MAIL BIDS &
CREDIT CARD PURCHASES
WILL BE CHARGED A 5%
CONVENIENCE FEE.**

CROSSBREDS

Consigned By
**ELLERBROCK
CLUB LAMBS**

Jeff & Brad Ellerbrock
13383 E 2000th St-Atkinson, IL 61235
C: 309/657-7515
Email: bellerbrock@nbsmail.net
Web: www.ellerbrockclublambs.com

3241-Yearling Ram
Information Sale Day

3242-Yearling Ram
Information Sale Day

3243-Yearling Ewe
Information Sale Day

3244-Yearling Ewe
Information Sale Day

3245-February Ram Lamb
Information Sale Day

3246-February Ram Lamb
Information Sale Day

3247-February Ram Lamb
Information Sale Day

3248-March Ram Lamb
Information Sale Day

3249-March Ram Lamb
Information Sale Day

3250-March Ram Lamb
Information Sale Day

3251-April Ram Lamb
Information Sale Day

3252-January Ewe Lamb
Information Sale Day

3253-February Ewe Lamb
Information Sale Day

3254-February Ewe Lamb
Information Sale Day

3255-February Ewe Lamb
Information Sale Day

3256-February Ewe Lamb
Information Sale Day



An Iowa March Crossbred Ram Lamb in the 2010 Midwest Classic Wether Sire Sale that sold at \$1,100 to Oklahoma.

3257-March Ewe Lamb
Information Sale Day

3258-March Ewe Lamb
Information Sale Day

3259-March Ewe Lamb
Information Sale Day

3260-March Ewe Lamb
Information Sale Day

Consigned By
ALLEN SHOW LAMBS

Ty & Nicole Allen ~ 580/225-2679
20510 E 1110 Rd-Elk City, OK 73644
Web: www.allenshowlambs.com

3261-February Ram Lamb
Information Sale Day

Consigned By
**MIDDLESWORTH
CLUB LAMBS**

Perry Middlesworth
18331 175th Ave-Fremont, IA 52561
H: 641/933-4484 ~ C: 641/660-3489
Email: jmiddlesworth@hotmail.com
www.middlesworthclublambs.com

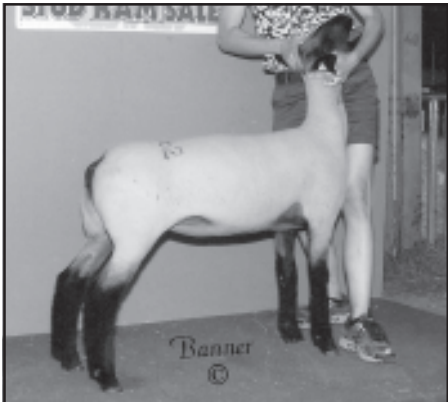
3262-February Ram Lamb
Information Sale Day

3263-February Ewe Lamb
Information Sale Day

Sires ~ Dams

MIDWEST STUD RAM SALE

CROSSBREDS



1st Crossbred January Ewe Lamb from Colorado at \$2,600 in the 2010 Midwest Classic Wether Sire Sale. Taken by a Minnesota buyer.

Consigned By

WISE CLUB LAMBS

Todd Wise

1825 WCR 59-Keenesburg, CO 80643

H: 303/732-0503 ~ C: 303/512-3864

Email: wiselori1@gmail.com

Web: www.wisecclublambs.com

3264-February Ram Lamb

Information Sale Day

3265-April Ram Lamb

Information Sale Day

3266-January Ewe Lamb

Information Sale Day

3267-January Ewe Lamb

Information Sale Day

3268-February Ewe Lamb

Information Sale Day

3269-February Ewe Lamb

Information Sale Day

3270-March Ewe Lamb

Information Sale Day

3271-March Ewe Lamb

Information Sale Day

Consigned By

BAILEY WISE

1825 WCR 59-Kennesburg, CO 80643

H: 303/732-0503 ~ C: 970/397-4077

Web: www.wisecclublambs.com

3272-March Ewe Lamb

Information Sale Day

3273-March Ewe Lamb

Information Sale Day

Consigned By

STITZLEIN CLUB LAMBS

Mike Stitzlein

797 Co Rd 1754-Ashland, OH 44805

H: 419/289-9520 ~ C: 419/651-3501

Web: www.stitzlein.com

3274-Yearling Ewe

Information Sale Day

3275-Yearling Ewe

Information Sale Day

3276-Yearling Ewe

Information Sale Day

3277-January Ewe Lamb

Information Sale Day

3278-January Ewe Lamb

Information Sale Day

3279-February Ewe Lamb

Information Sale Day

3280-February Ewe Lamb

Information Sale Day

3281-March Ewe Lamb

Information Sale Day

3282-March Ewe Lamb

Information Sale Day

Substitute Entries

Will Be Identified

With a Line

Under the Lot Number

Consigned By

SLACK CLUB LAMBS

Tom Slack

1022 W 1300 N

North Manchester, IN 46962

H: 260/982-8714 ~ C: 260/750-7399

Email: luvmysheep@aol.com

3283-January Ram Lamb

Information Sale Day

3284-February Ram Lamb

Information Sale Day

3285-March Ram Lamb

Information Sale Day

3286-Yearling Ewe

Information Sale Day

3287-February Ewe Lamb

Information Sale Day

3288-March Ewe Lamb

Information Sale Day

Consigned By

PILGER CLUB LAMBS

Norman & Marty Pilger

2135 Road 20-Wallace, KS 67761

H: 785/852-4102 ~ C: 785/821-2738

Email: mkpilger@hotmail.com

3289-Yearling Ram

Information Sale Day

3290-Yearling Ewe

Information Sale Day

3291-January Ewe Lamb

Information Sale Day

3292-January Ewe Lamb

Information Sale Day

3293-February Ewe Lamb

Information Sale Day

3294-February Ewe Lamb

Information Sale Day

3295-March Ewe Lamb

Information Sale Day

3296-March Ewe Lamb

Information Sale Day

Sires ~ Dams

MIDWEST STUD RAM SALE

Consigned By
HALL CLUB LAMBS

John Hall
23315 Chestertown Rd
Chestertown, MD 21620
H: 410/778-1768 ~ C: 410/708-8781
Email: hallclublambs@gmail.com
Web: www.hallclublambs.com

3297-Yearling Ram
Information Sale Day

3298-March Ewe Lamb
Information Sale Day

Consigned By
JBJ CLUB LAMBS

Jeff & Billy Johnson
W8778 Kilkenny Rd-Delavan, WI 53115
H: 608/883-2991 ~ C: 608/289-5686
Email: cfsfeed@yahoo.com

3299-February Ram Lamb
Information Sale Day

3300-March Ram Lamb
Information Sale Day

3301-April Ram Lamb
Information Sale Day

3302-February Ewe Lamb
Information Sale Day

3303-March Ewe Lamb
Information Sale Day

3304-April Ewe Lamb
Information Sale Day

3399-Yearling Ram
Information Sale Day

Our Crossbred lambs will be sired by an
Ellerbrock Ram.

Consigned By
AWTR CLUB LAMBS

Keith Anderson ~ 605/261-1282
47932 298th St-Alcester, SD 57001
Email: keithanderson@alliancecom.net
Web: www.clublambpage.com

3305-January Ram Lamb
Information Sale Day

MAIL BIDS & DELIVERY
Call **ASSISTANCE**
573/442-8257 AVAILABLE

CROSSBREDS

Consigned By
G&G CLUB LAMBS

PO Box 109-Halifax, PA 17032
H: 717/896-8526 ~ C: 717/503-0245
Email: gngclublambs@comcast.net
Web: www.gngclublambs.com

3306-Yearling Ram
Information Sale Day

3307-February Ram Lamb
Information Sale Day

3308-February Ewe Lamb
Information Sale Day

Consigned By
KNAPP SISTERS CLUB

Hannah Knapp
21623 312th St-Bloomfield, IA 52537
H: 641/929-3390 ~ C: 641/208-5977
Email: knaplamb@netins.net

3309-March Ram Lamb
Information Sale Day

3310-February Ewe Lamb
Information Sale Day

3311-February Ewe Lamb
Information Sale Day

3312-February Ewe Lamb
Information Sale Day

3313-March Ewe Lamb
Information Sale Day

3314-March Ewe Lamb
Information Sale Day

3315-March Ewe Lamb
Information Sale Day

3316-April Ewe Lamb
Information Sale Day

Consigned By
CURTIS CLUB LAMBS

Drew Curtis
76070 Rd 335-Madrid, NE 69150
H: 308/326-4301 ~ C: 308/352-6224
Email: curtis@nebnet.net

3317-February Ram Lamb
Information Sale Day



2nd Crossbred February Ram Lamb from
Pennsylvania that went to Iowa at
\$3,750 in the 2010 Midwest Classic
Wether Sire Sale.

Consigned By
M&M LIVESTOCK

Mickey & Melea Cook
260 Straylott Rd-Franklin, GA 30217
H: 706/675-8908 ~ C: 706/302-9508
Email: 2livestock08@live.com
Web: www.mandmlivestock.com

3318-Yearling Ewe
Information Sale Day

3319-Yearling Ewe
Information Sale Day

Consigned By
THOMAS SHOW LAMBS

Roger & Sandy Thomas
20568 E 290th Ave
Cainsville, MO 64632
H: 660/872-6970 ~ C: 660/868-0063
Email: thomas80@grm.net
Web: www.thomasshowlambs.com

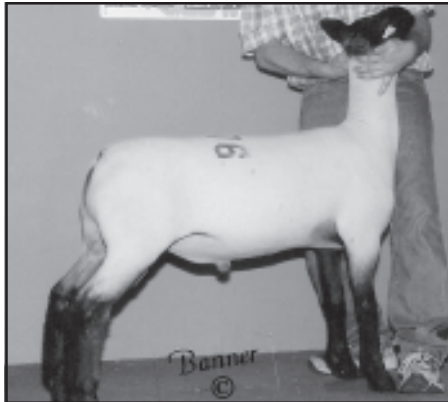
3320-February Ewe Lamb
Information Sale Day

3321-April Ewe Lamb
Information Sale Day

Sires ~ Dams

MIDWEST STUD RAM SALE

CROSSBREDS



This 5th Place Hoosier Crossbred February Ram Lamb brought \$4,000 from an Iowa bidder in the 2010 Midwest Classic Wether Sire Sale.

Consigned By
MILLER FARMS

Kody Miller
20067 462nd Ave-Bruce, SD 57220
H: 605/627-5247 ~ C: 605/690-1997
Email: kodymillercattle@hotmail.com
Web: www.millerangusfarms.com

3324-February Ram Lamb
Information Sale Day

3325-February Ewe Lamb
Information Sale Day

3326-March Ewe Lamb
Information Sale Day

Consigned By
WALKUP CLUB LAMBS

Daryl & Doug Walkup
13675 SE State Rd DD
Gower, MO 64454
H: 816/424-6419 ~ C: 816/592-0482
Email: walkup_doug@hotmail.com
Web: www.clublambpage.com

3327-February Ewe Lamb
Information Sale Day

3328-March Ewe Lamb
Information Sale Day

Consigned By
**BELL & LEONHARD
SHOW LAMBS**

Michael Leonhard & Bob Bell
2238 W 50 N-Portland, IN 47371
H: 260/726-7392 ~ C: 260/729-2584
Email: mleonhard2@gmail.com

3329-February Ram Lamb
Information Sale Day

3330-March Ram Lamb
Information Sale Day

3331-April Ram Lamb
Information Sale Day

3332-February Ewe Lamb
Information Sale Day

3333-March Ewe Lamb
Information Sale Day

Consigned By
DESPAIN CLUB LAMBS

Larry DeSpain
PO Box 292-Hinton, OK 73047
H: 405/542-3250 ~ C: 405/545-0511

3334-Yearling Ram
Information Sale Day

3335-March Ram Lamb
Information Sale Day

3336-April Ewe Lamb
Information Sale Day

3337-April Ewe Lamb
Information Sale Day

Consigned By
JONES CLUB LAMBS

Derek Jones
6840 N Co Rd 200 E-Osgood, IN 47037
H: 812/852-4508 ~ C: 812/621-7746
Email: djones852@hotmail.com
Web: www.jonesclublambs.com

3338-February Ewe Lamb
Information Sale Day

3339-March Ewe Lamb
Information Sale Day

Consigned By
**HUNTRODS CLUB
LAMBS**

Mark Huntrods
73671 305th St-Collins, IA 50055
H: 641/385-2268 ~ C: 641/485-6584
markhuntrods@iowatelecom.net

3340-February Ram Lamb
Information Sale Day

Consigned By
DOTY CLUB LAMBS

Philip & Randa Doty
32788 220th St-Maryville, MO 64468
H: 660/582-2434 ~ C: 816/803-0094
Email: randadoty@yahoo.com
Web: www.dotyclublambs.com

3341-March Ewe Lamb
Information Sale Day

Consigned By
**ALLISON MCGOLDEN
CLUB LAMBS**

PO Box 744-Arapaho, OK 73620
H: 580/323-7198 ~ C: 580/331-9675
Email: amcgolden@yahoo.com
www.allisonmcgoldenclublambs.com

3342-Yearling Ewe
Information Sale Day

3343-Yearling Ewe
Information Sale Day

3344-Yearling Ewe
Information Sale Day

Consigned By
HEATH GEIMAN

27411 W 4th N
Garden Plain, KS 67050
316/304-9227
Email: geiman@msn.com
Web: www.heathgeimanhamps.com

3345-January Ram Lamb
Information Sale Day

3346-February Ram Lamb
Information Sale Day

3347-March Ram Lamb
Information Sale Day

3348-February Ewe Lamb
Information Sale Day

Sires ~ Dams

MIDWEST STUD RAM SALE

3349-February Ewe Lamb
Information Sale Day

Consigned By
**MORRIS-PIERSON
CLUB LAMBS**

Leon Morris & Tyler Pierson
10617 S Jardot-Perkins, OK 74059
H: 405/612-2503 ~ C: 405/612-6172

3350-February Ewe Lamb
Information Sale Day

3351-February Ewe Lamb
Information Sale Day

3352-March Ewe Lamb
Information Sale Day

3353-March Ewe Lamb
Information Sale Day

3354-March Ewe Lamb
Information Sale Day

3355-March Ewe Lamb
Information Sale Day

Consigned By
COSLETT CLUB LAMBS

Lonnie or Lisa Coslett
14438 NCR 3150-Maysville, OK 73057
H: 405/320-3915 ~ C: 405/620-6854
Email: lisacos_@hotmail.com
Web: www.coslettclublambs.com

3356-March Ram Lamb
Information Sale Day

3357-February Ewe Lamb
Information Sale Day

3358-March Ewe Lamb
Information Sale Day

Consigned By
PRUNTY/DYER CLUB

Clayton Dyer/Tim Prunty
1777 Hwy J54-Clio, IA 50052
C: 641/414-5556
Email: claytondyer@gmail.com
Web: www.pruntydyerclublambs.com

3359-Yearling Ram
Information Sale Day

3360-February Ram Lamb
Information Sale Day

3361-March Ram Lamb
Information Sale Day

CROSSBREDS

3362-April Ram Lamb
Information Sale Day

3363-March Ewe Lamb
Information Sale Day

Consigned By
K-N-C

Kevin Newsom ~ 325/716-3333
10238 US Hwy 87 N
San Angelo, TX 76901
Email: kwnewsom@hotmail.com
Web: www.knctrifecta@hotmail.com
VFSCP ~ 2001

3364-Yearling Ram
Information Sale Day

3365-Yearling Ram
Information Sale Day

3366-March Ram Lamb
Information Sale Day

3367-March Ram Lamb
Information Sale Day

3368-April Ram Lamb
Information Sale Day

3369-March Ewe Lamb
Information Sale Day

3370-March Ewe Lamb
Information Sale Day

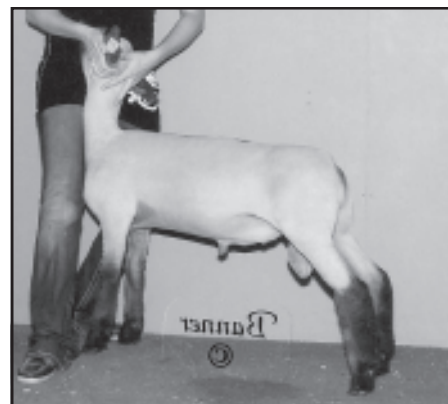
3371-April Ewe Lamb
Information Sale Day

3372-April Ewe Lamb
Information Sale Day

Consigned By
**MCLAUGHLIN
GRIFFIN SHEEP**

Willard McLaughlin
400 CR 220-Craig, CO 81625
H: 970/824-7136 ~ C: 970/629-0263
Email: kmclaughlinsheep@live.com
Web: www.clublambpage.com

3373-Fall Ewe Lamb
Information Sale Day



1st April Crossbred Ram Lamb from Oklahoma that went to Indiana for \$3,200 in the 2010 Midwest Classic Wether Sire Sale.

Consigned By
HULL CLUB LAMBS

Justin Hull ~ 541/419-3021
25281 Alfalfa Mkt Rd-Bend, OR 97701
Email: hullclublambs@gmail.com
Web: www.hullclublambs.com
VFSCP ~ 07/2005

3374-Fall Ram Lamb
Information Sale Day

3375-Fall Ewe Lamb
Information Sale Day

3376-February Ram Lamb
Information Sale Day

3377-January Ewe Lamb
Information Sale Day

3378-February Ewe Lamb
Information Sale Day

3379-March Ewe Lamb
Information Sale Day

3380-April Ewe Lamb
Information Sale Day

MAIL BIDS & DELIVERY
Call **ASSISTANCE**
573/442-8257 AVAILABLE

Sires ~ Dams

MIDWEST STUD RAM SALE

CROSSBREDS



A Crossbred Yearling Ram from Ohio at \$950 that sold in the 2010 Midwest Classic Wether Sire Sale into Kansas.

Consigned By
BOWERMASTER CLUB LAMBS

Frank Bowermaster
9944 Pearson-Octa Rd
Sabina, OH 45169
H: 740/948-2259 ~ C: 740/572-7072
bowermasterclublambs@yahoo.com

3381-February Ram Lamb
Information Sale Day

3382-February Ram Lamb
Information Sale Day

Consigned By
DON & ALICIA WRIGHT

Don & Alicia Wright
25250 St Hwy 413-Galena, MO 65656
H: 417/236-2010 ~ C: 417/437-7381
wrightsrockyacres@hotmail.com

3383-Yearling Ram
Information Sale Day

3384-February Ewe Lamb
Information Sale Day

3385-February Ewe Lamb
Information Sale Day

Consigned By
HICKEY LIVESTOCK

Jace Hicke
17035 Rd 26-Brush, CO 80723
H: 970/467-0947 ~ C: 970/380-2861
Email: jace@superiorlivestock.com
Web: www.hickeylivestock.com

3386-March Ram Lamb
Information Sale Day

3388-Yearling Ewe
Information Sale Day

Consigned By
OVERMAN CLUB LAMBS

Mark Overman
12370 WCR 78-Eaton, CO 80615
H: 970/686-2219 ~ C: 970/227-3869
Email: onyxover@aol.com
Web: www.clublambpage.com

3387-March Ewe Lamb
Information Sale Day

Consigned By
FRED KNOP FAMILY

Fred & Janine Knop
64131 630th St-Atlantic, IA 50022
H: 712/243-3574 ~ C: 712/249-5864
Email: fjbllamb@netins.net
Web: www.fredknopfamily.com

3389-Yearling Ram
Information Sale Day

3390-Yearling Ewe
Information Sale Day

3391-Yearling Ewe
Information Sale Day

3392-February Ram Lamb
Information Sale Day

3393-February Ram Lamb
Information Sale Day

3394-January Ewe Lamb
Information Sale Day

3395-February Ewe Lamb
Information Sale Day

3396-February Ewe Lamb
Information Sale Day

Consigned By
REEL CLUB LAMBS

Scott Reel
695 N 3859th Rd-Mendota, IL 61342
H: 815/538-1947 ~ C: 815/370-2883
Email: reelclublambs@gmail.com
Web: www.reelclublambs.com

3397-February Ram Lamb #13

S: "Elson"
D: 7042

3398-February Ewe Lamb #41

S: "Full Throttle"
D: EL 6638

Consigned By
STAR DUST SHEEP FARM

Sherry Nelson
2444 250th St-Lincolnville, KS 66858
H: 316/250-7621

3400-February Ewe Lamb
Information Sale Day

Consigned By
HINDMAN SHOW LAMBS

Mike & Mark Hindman ~ 515/491-7829
1648 640th Ave-Albia, IA 52531

3402-January Ram Lamb
Information Sale Day

3403-February Ram Lamb
Information Sale Day

3404-February Ram Lamb
Information Sale Day

3405-March Ram Lamb
Information Sale Day

3406-March Ram Lamb
Information Sale Day

3407-April Ram Lamb
Information Sale Day

Sires ~ Dams

MIDWEST STUD RAM SALE

3408-February Ewe Lamb
Information Sale Day

3409-March Ewe Lamb
Information Sale Day

3410-March Ewe Lamb
Information Sale Day

Consigned By

GOODWIN CLUB LAMBS

Dale Goodwin ~ 580/763-2547

8550 W North Ave

Ponca City, OK 74601

Email: dgoodwin@poncacity.net

3411-Yearling Ram
Information Sale Day

3412-Yearling Ewe
Information Sale Day

3413-Yearling Ewe
Information Sale Day

3414-March Ram Lamb
Information Sale Day

3415-February Ewe Lamb
Information Sale Day

3416-March Ewe Lamb
Information Sale Day

3417-April Ewe Lamb
Information Sale Day

3418-April Ewe Lamb
Information Sale Day

Lambs will be sired by "Incentive", our new Allred/Elliott ram (Cottontop x Composure x Leverage)). He has stamped this lambcrop with structural correctness, and loads of muscle shape and eye appeal. The kids have finally talked me into bringing a set of lambs from our keeper pen. We will bring lambs that are not only impressive visually, but more importantly from our standpoint, are backed genetically by a strong female lines. We have great confidence in their ability to produce the right kind.

Consigned By

**MCILRATH
CLUB LAMBS**

Harold & Jolene McClrath

3259 Sanford Ave-Laurel, IA 50141

H: 641/476-3405 ~ C: 641/476-5125

Email: samuelm@heartofiowa.net

Web: www.clublambpage.com

3419-Yearling Ram
Information Sale Day

CROSSBREDS

3420-January Ram Lamb
Information Sale Day

3421-February Ram Lamb
Information Sale Day

3422-March Ram Lamb
Information Sale Day

3423-April Ram Lamb
Information Sale Day

Consigned By

**SCOTT & SHELLY
SCHMITZ**

11467 W 76th St N-Rhodes, IA 50234

H: 641/227-3230 ~ C: 641/485-9860

Email: ssschmitz@partnercom.net

Web: www.clublambpage.com

3424-January Ram Lamb
Information Sale Day

3425-February Ram Lamb
Information Sale Day

3426-February Ram Lamb
Information Sale Day

3427-March Ram Lamb
Information Sale Day

3428-March Ram Lamb
Information Sale Day

3429-April Ram Lamb
Information Sale Day

Consigned By

SARA WATTONVILLE

65544 305th St-Maxwell, IA 50161

H: 515/387-8614

Email: wattonville@iowatelecom.net

Web: www.clublambpage.com

3430-January Ram Lamb
Information Sale Day

**MAIL BIDS &
CREDIT CARD PURCHASES
WILL BE CHARGED A 5%
CONVENIENCE FEE.**



Reserve Champion Crossbred February Ram Lamb that topped all Crossbreds at \$10,500 going to California from Iowa in the 2010 Midwest Classic Wether Sire Sale.

Consigned By

RIETEMA CLUB LAMBS

Bob Rietema ~ 712/441-3060

1265 2nd Ave SE

Sioux Center, IA 51250

3431-January Ram Lamb
Information Sale Day

3432-January Ewe Lamb
Information Sale Day

MAIL BIDS & DELIVERY

Call **ASSISTANCE**
573/442-8257 AVAILABLE



Reserve Champion March Crossbred Ewe Lamb at \$1,750. An Iowa lamb sold to an Iowa buyer in the 2010 Midwest Classic Wether Sire Sale.

Sires ~ Dams

MIDWEST STUD RAM SALE